


WAAS CH 61002 W28A	APP CRS 276°	Rwy Idg TDZE Apt Elev	8394 7 65
--	------------------------	-----------------------------	--------------------------------------

RNAV (GPS) Y RWY 28R

FORT LAUDERDALE/HOLLYWOOD INTL (FLL)

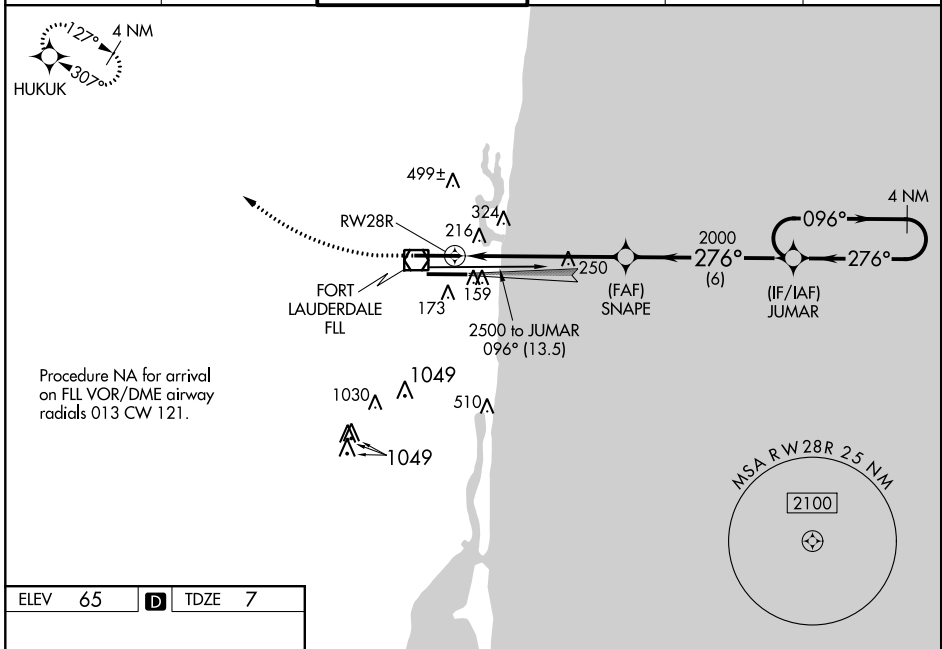
⚠ For uncompensated Baro-VNAV systems, LNAV/VNAV NA below 5°C (40°F) or above 54°C (130°F). DME/DME RNP-0.3 NA. Inop table does not apply to LPV all Cats. LNAV procedure NA during simultaneous operations. Use of FD or AP providing RNAV track guidance required during simultaneous operations. Simultaneous approach authorized with Rwy 28L.

MALSR

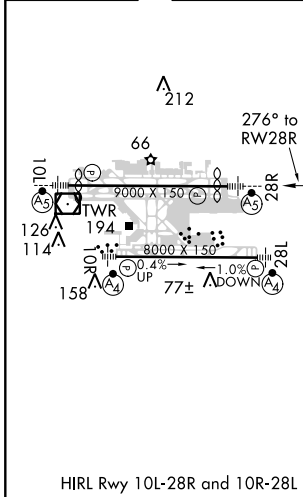


MISSED APPROACH:
Climb to 800 then climbing right turn to 4000 direct HUKUK and hold, continue climb-in-hold to 4000.

D-ATIS 135.0	MIAMI APP CON 133.775 285.6	FORT LAUDERDALE TOWER 119.3 257.8	GND CON 121.4	CLNC DEL 128.4	CPDLC
------------------------	---------------------------------------	--	-------------------------	--------------------------	-------



ELEV 65	D	TDZE 7
---------	----------	--------



800

4000

HUKUK

VGSI and RNAV glidepath not coincident (VGSI Angle 3.00°/TCH 69°).

JUMAR 4 NM Holding Pattern

*RNAV only.

*1.4 NM to RWY 28R

SNAPE 2000

276°

2000

096°

2500

GP 3.00° TCH 49

CATEGORY	A	B	C	D
LPV DA		257/40	250 (200-¾)	
LNAV/VNAV DA		594-1½	587 (600-1½)	
LNAV MDA	520/24	513 (500-½)	520/55	513 (500-¼)
C CIRCLING	540-1 475 (500-1)	600-1 535 (600-1)	760-2 695 (700-2)	760-2¼ 695 (700-2¼)

SE-3, 21 JUN 2018 to 19 JUL 2018

SE-3, 21 JUN 2018 to 19 JUL 2018