

APP CRS 276°	Rwy Idg 8394
	TDZE 7
	Apt Elev 9

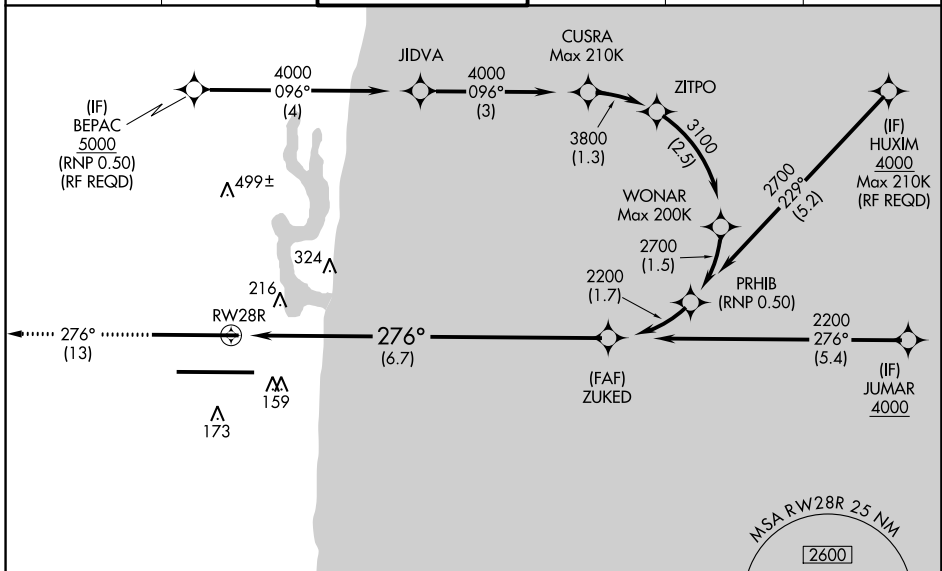
RNAV (RNP) Z RWY 28R

FORT LAUDERDALE/HOLLYWOOD INTL (FLL)

For uncompensated Baro-VNAV systems, procedure NA below 5°C (40°F) or above 54°C (130°F). GPS Required. Inop table does not apply.

MALSR MISSED APPROACH: Climb to 4000 on track 276° to PIONN and hold, continue climb-in-hold to 4000.

D-ATIS 135.0	MIAMI APP CON 133.775 285.6	FORT LAUDERDALE TOWER 119.3 257.8	GND CON 121.4	CLNC DEL 128.4	CPDLC
------------------------	---------------------------------------	--	-------------------------	--------------------------	-------



ELEV	9	D	TDZE	7
------	---	----------	------	---

MISSED APCH FIX

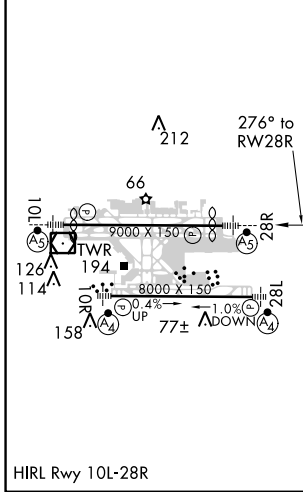
4 NM

276°
096° PIONN

RADAR REQUIRED

MSA RW28R 25 NM

2600



4000 PIONN VGSi and RNAV glidepath not coincident (VGSi Angle 3.00/TCH 69).

tr 276°

See planview for multiple IF locations.

ZUKED 2200

RW28R 276° 2200

GP 3.00° TCH 49

6.7 NM

CATEGORY	A	B	C	D
RNP 0.15 DA		405-1 $\frac{3}{8}$	398 (400-1 $\frac{3}{8}$)	
RNP 0.30 DA		627-1 $\frac{3}{8}$	620 (700-1 $\frac{3}{8}$)	

AUTHORIZATION REQUIRED

SE-3, 21 JUN 2018 to 19 JUL 2018

SE-3, 21 JUN 2018 to 19 JUL 2018