

WAAS CH 58336 W28B	APP CRS 276°	Rwy Idg TDZE Apt Elev	8000 65 65
--	------------------------	-----------------------------	---------------------------------------

RNAV (GPS) RWY 28L

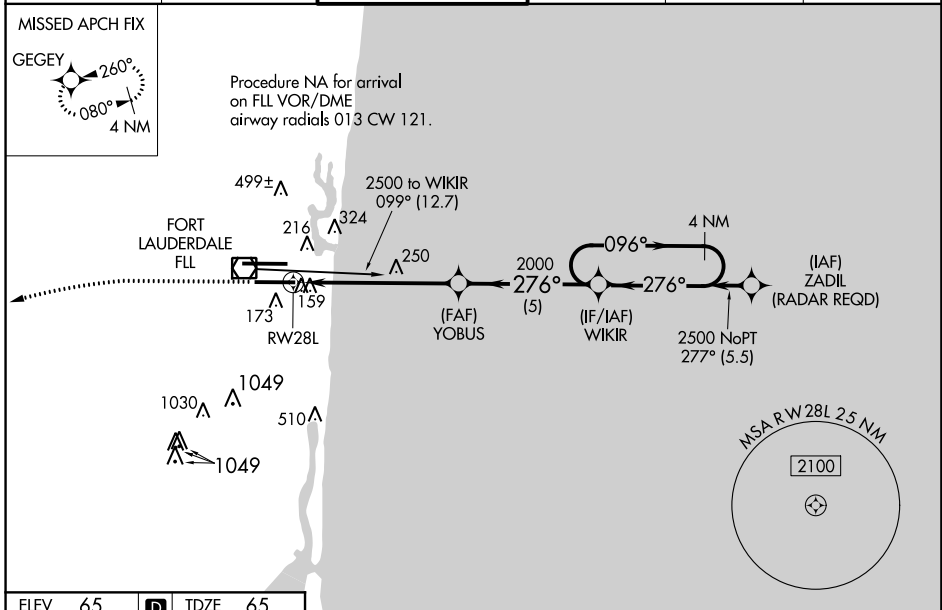
FORT LAUDERDALE/HOLLYWOOD INTL (FLL)

⚠ For uncompensated Baro-VNAV systems, LNAV/VNAV NA below 6°C (43°F) or above 54°C (130°F). DME/DME RNP-0.3 NA. Simultaneous approach authorized. LNAV procedure NA during simultaneous operations. Use of FD or AP providing RNAV track guidance required during simultaneous operations. For inop ALS increase LNAV/VNAV all Cats visibility to RVR 4500 and LNAV Cat D visibility to 1/4 SM. Inop table does not apply to LPV all Cats.

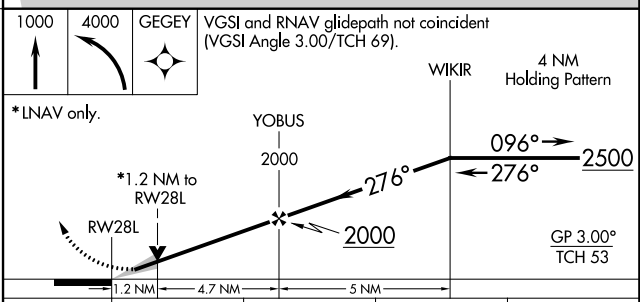
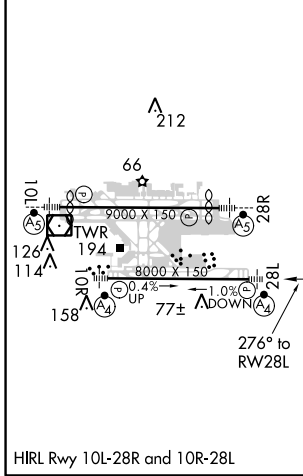
MALSF

MISSED APPROACH:
Climb to 1000 then climbing left turn to 4000 direct GEGEY and hold, continue climb-in-hold to 4000.

D-ATIS 135.0	MIAMI APP CON 133.775 285.6	FORT LAUDERDALE TOWER 119.3 257.8	GND CON 121.4	CLNC DEL 128.4	CPDLC
------------------------	---------------------------------------	--	-------------------------	--------------------------	-------



ELEV 65	D	TDZE 65
---------	----------	---------



CATEGORY	A	B	C	D
LPV DA		265/40	200 (200-¾)	
LNAV/VNAV DA		343/40	278 (300-¾)	
LNAV MDA	500/40	435 (500-¾)	500/50	435 (500-1)
C CIRCLING	680-1	615 (700-1)	800-2 735 (700-2)	800-2¼ 735 (800-2¼)

SE-3, 21 JUN 2018 to 19 JUL 2018

SE-3, 21 JUN 2018 to 19 JUL 2018