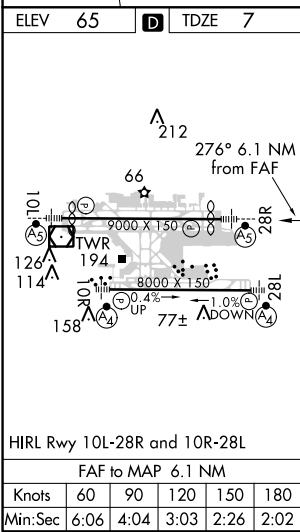
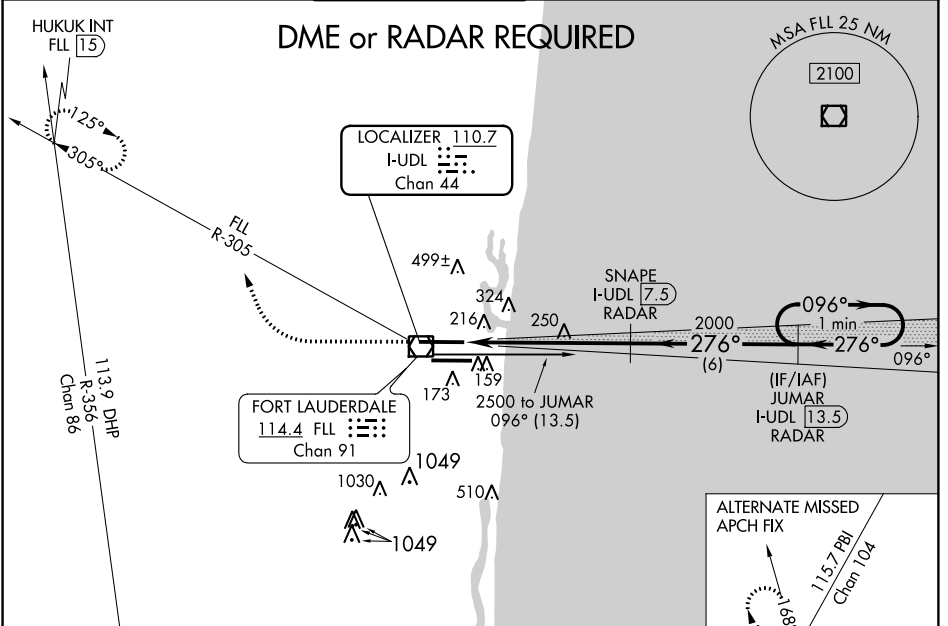


LOC/DME I-UDL <b>110.7</b> Chan 44	APP CRS <b>276°</b>	Rwy Idg TDZE Apt Elev	<b>8394</b> <b>7</b> <b>65</b>
--	------------------------	-----------------------------	--------------------------------------

# ILS or LOC RWY 28R

FORT LAUDERDALE/HOLLYWOOD INTL (FLL)

<p><b>▼</b> For inop MALS, increase S-LOC 28R Cat C/D visibility to 1 1/2 mile.  <b>▲</b> Simultaneous approach authorized with Rwy 28L.                  Inop table does not apply to S-ILS 28R.</p>	MALS	MISSED APPROACH: Climb to 800 then climbing right turn to 4000 on FLL VOR/DME R-305 to HUKUK INT/FLL 1.5 DME and hold, continue climb-in-hold to 4000.			
	D-ATIS <b>135.0</b>	MIAMI APP CON <b>133.775 285.6</b>	FORT LAUDERDALE TOWER <b>119.3 257.8</b>	GND CON <b>121.4</b>	CLNC DEL <b>128.4</b>



SE-3, 21 JUN 2018 to 19 JUL 2018

SE-3, 21 JUN 2018 to 19 JUL 2018