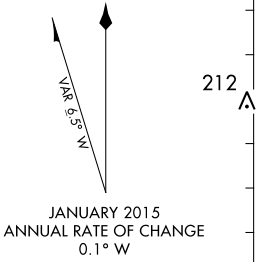


D-ATIS  
135.0  
FORT LAUDERDALE TOWER  
119.3 257.8  
GND CON  
121.4  
CLNC DEL  
128.4  
CPDLC

**D**

**FIELD ELEV 65**

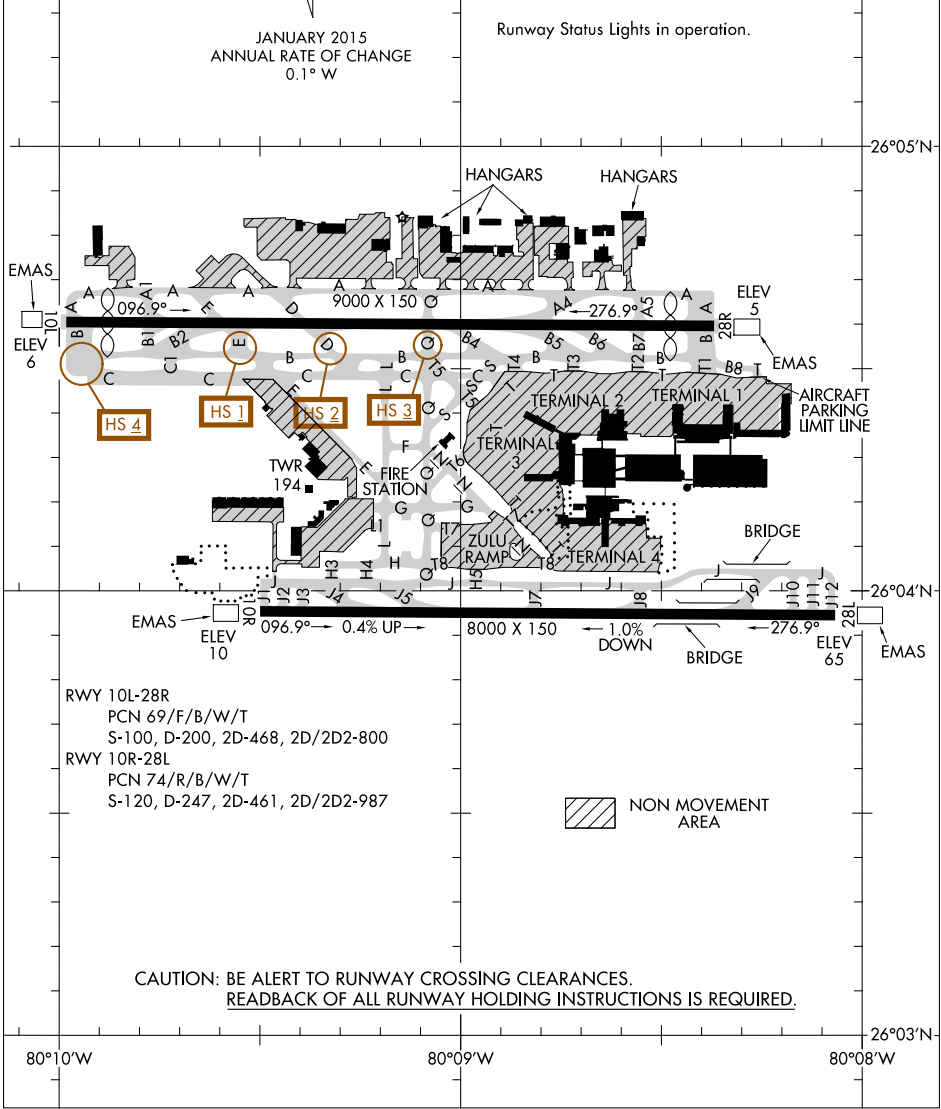


ASDE-X in use. Operate transponders with altitude reporting mode and ADS-B (if equipped) enabled on all airport surfaces.

Runway Status Lights in operation.

SE-3, 21 JUN 2018 to 19 JUL 2018

SE-3, 21 JUN 2018 to 19 JUL 2018



RWY 10L-28R  
PCN 69/F/B/W/T  
S-100, D-200, 2D-468, 2D/2D2-800

RWY 10R-28L  
PCN 74/R/B/W/T  
S-120, D-247, 2D-461, 2D/2D2-987

NON MOVEMENT AREA

**CAUTION: BE ALERT TO RUNWAY CROSSING CLEARANCES.  
READBACK OF ALL RUNWAY HOLDING INSTRUCTIONS IS REQUIRED.**