

VORTAC ONP 117.1 Chan 118	APP CRS 331°	Rwy Idg TDZE 158 Apt Elev 160	5098
---	------------------------	---	-------------

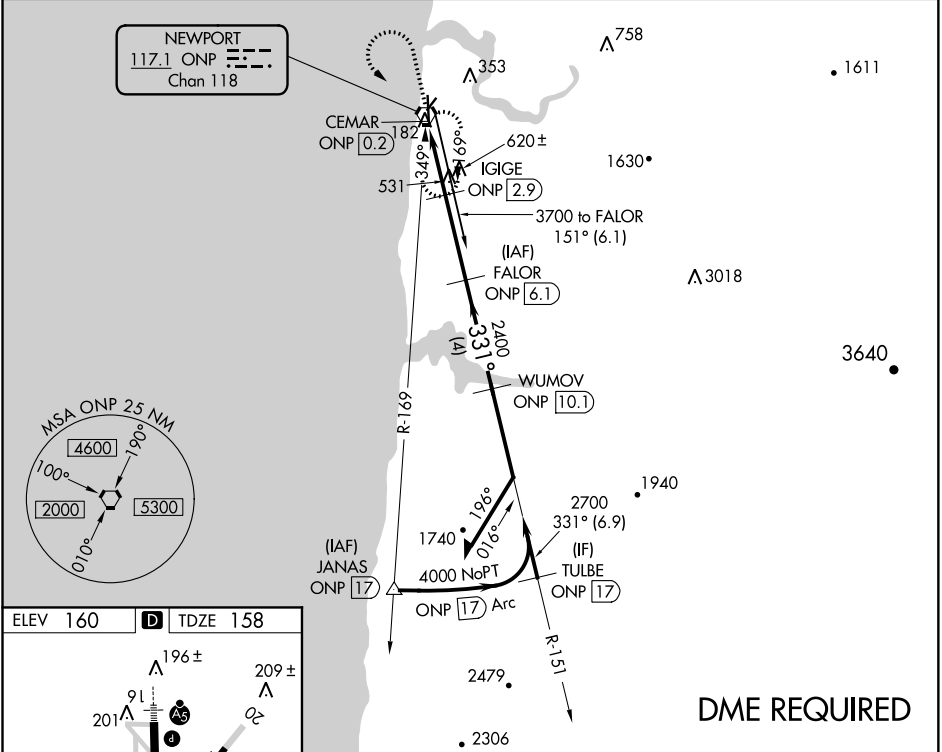
VOR RWY 34

NEWPORT MUNI (ONP)

▽ DME required. VDP NA when using Tillamook altimeter setting. When local altimeter setting not received, use Tillamook altimeter setting; increase all MDA 140 feet; increase S-34 Cat B/C/D visibility 1/2 SM, and Circling Cat A and B visibility 1/4 SM. Rwy 34 helicopter visibility reduction below 3/4 SM NA.

MISSED APPROACH: Climb to 2400 then climbing left turn to 4000 direct ONP VORTAC and hold, continue climb-in-hold to 4000.

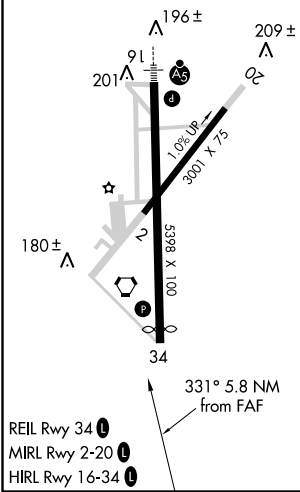
AWOS-3 133.9	SEATTLE CENTER 125.8 291.7	UNICOM 122.8 (CTAF) 0
------------------------	--------------------------------------	---------------------------------



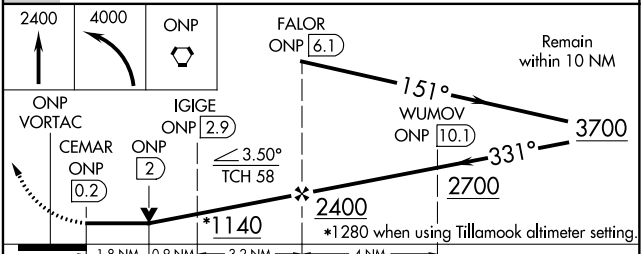
NW-1, 21 JUN 2018 to 19 JUL 2018

NW-1, 21 JUN 2018 to 19 JUL 2018

ELEV 160	D	TDZE 158
----------	----------	----------



REIL Rwy 34 **0**
MIRL Rwy 2-20 **0**
HIRL Rwy 16-34 **0**



CATEGORY	A	B	C	D
S-34	880-1	722 (800-1)	880-2	722 (800-2)
C CIRCLING	880-1 720 (800-1)	1000-1 1/4 840 (900-1 1/4)	1400-3 1240 (1300-3)	1600-3 1440 (1500-3)