

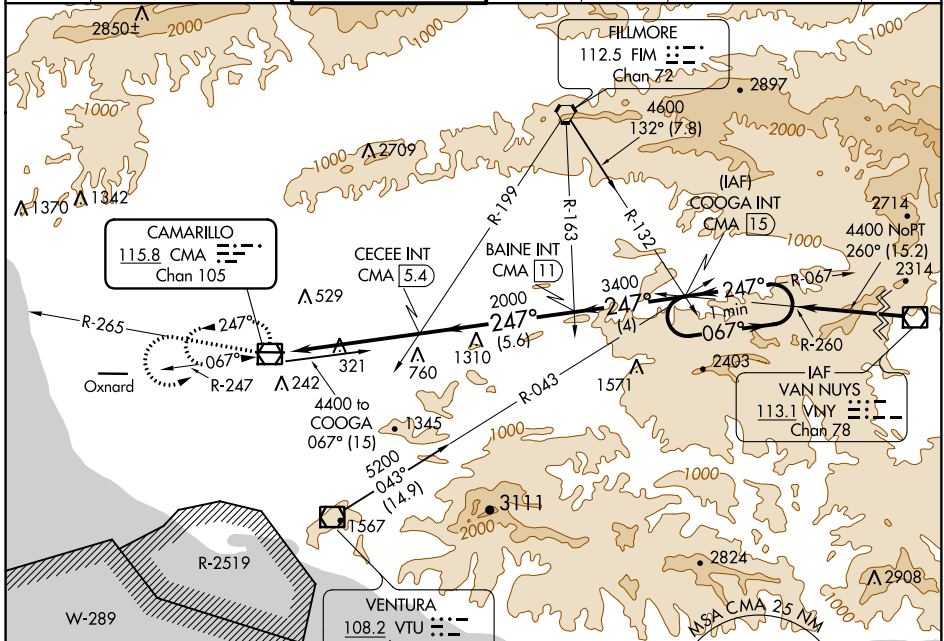
VOR/DME CMA 115.8 Chan 105	APP CRS 247°	Rwy Idg TDZE Apt Elev	6013 77 77
--	------------------------	-----------------------------	---------------------------------------

VOR RWY 26

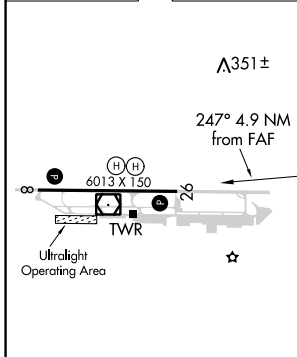
CAMARILLO (CMA)

⚠ Circling not authorized north of Rwy 8/26. MISSED APPROACH: Climb to 2000 via CMA R-265 then climbing left turn to 4400 direct CMA VOR/DME and hold.

ATIS 126.025	POINT MUGU APP CON * 124.7 335.5	CAMARILLO TOWER * 128.2 (CTAF) 0 269.4	GND CON 121.8	CLNC DEL 121.8	POINT MUGU CLNC DEL 120.75 279.55	UNICOM 122.95
------------------------	--	--	-------------------------	--------------------------	---	-------------------------



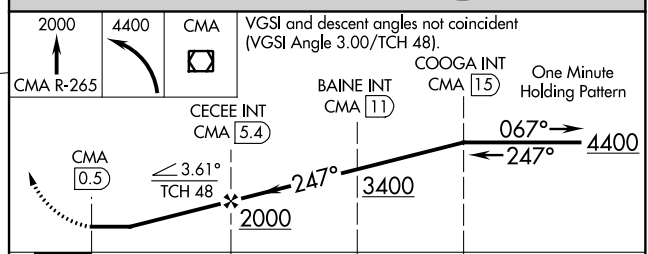
ELEV 77	TDZE 77
---------	---------



MIRL Rwy 8-26
REIL Rwy 8 and 26L

FAF to MAP 4.9 NM

Knots	60	90	120	150	180
Min:Sec	4:54	3:16	2:27	1:58	1:38



CATEGORY	A	B	C	D
S-26	1100-1¼ 1023 (1100-1¼)	1100-1½ 1023 (1100-1½)	1100-3 1023 (1100-3)	NA
CIRCLING	1100-1¼ 1023 (1100-1¼)	1100-1½ 1023 (1100-1½)	1100-3 1023 (1100-3)	NA

SW-3, 21 JUN 2018 to 19 JUL 2018

SW-3, 21 JUN 2018 to 19 JUL 2018