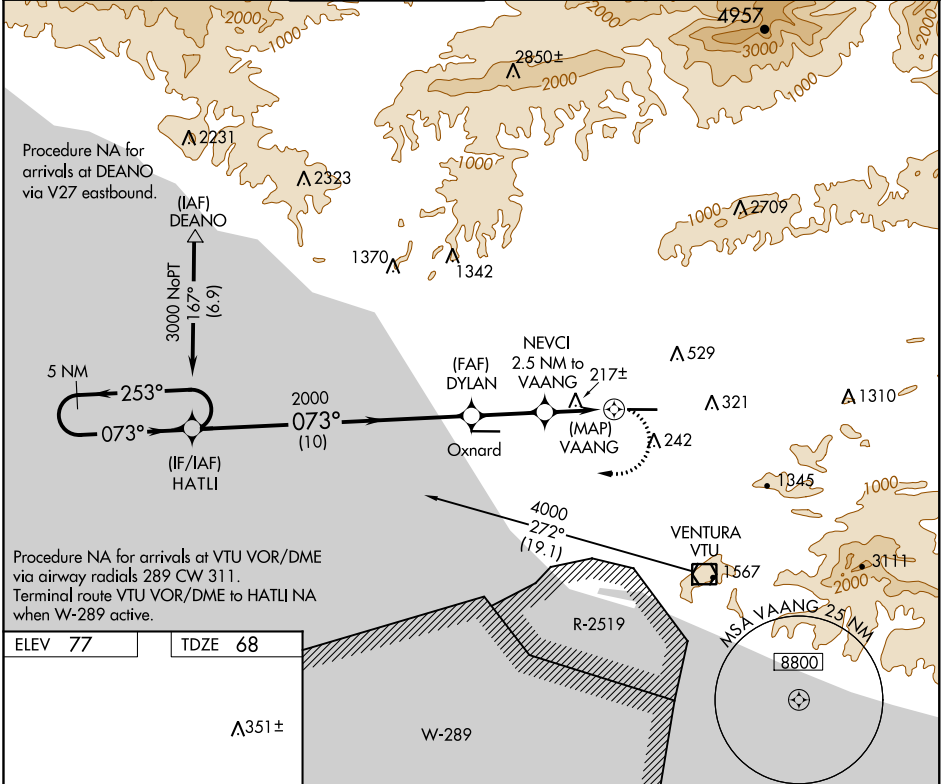


APP CRS	Rwy Idg	<b>6013</b>
<b>073°</b>	TDZE	<b>68</b>
	Apt Elev	<b>77</b>

# RNAV (GPS) RWY 8

CAMARILLO (CMA)

<p><b>⚠</b> Circling NA north of Rwy 8-26. DME/DME RNP-0.3 NA. When local altimeter setting not received, use Oxnard altimeter setting and increase all MDA 20 feet.</p>		<p>MISSED APPROACH: Climbing right turn to 3000 direct HATLI and hold.</p>				
ATIS	POINT MUGU APP CON	CAMARILLO TOWER	GND CON	CLNC DEL	POINT MUGU CLNC DEL	UNICOM
<b>126.025</b>	<b>124.7 335.5</b>	<b>128.2 (CTAF) 269.4</b>	<b>121.8</b>	<b>121.8</b>	<b>120.75 279.55</b>	<b>122.95</b>



ELEV 77 TDZE 68

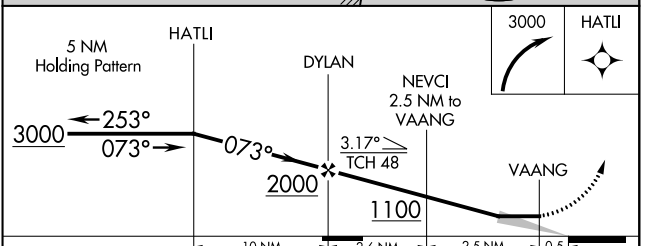
A351±

TWR

Ultralight Operating Area

REIL Rws 8 and 26

MIRL Rwy 8-26



CATEGORY	A	B	C	D
LNAV MDA	840-1 772 (800-1)	840-1¼ 772 (800-1¼)	840-2½	772 (800-2½)
CIRCLING	840-1 763 (800-1)	840-1¼ 763 (800-1¼)	840-2½	763 (800-2½)

SW-3, 21 JUN 2018 to 19 JUL 2018

SW-3, 21 JUN 2018 to 19 JUL 2018