

SOCAL APP CON
 120.4 360.6
 POINT MUGU NAS (NAVAL BASE VENTURA CO) ATIS *
 125.55 363.05
 CAMARILLO ATIS
 126.025
 OXNARD ATIS
 118.05

NOTE: RADAR required.

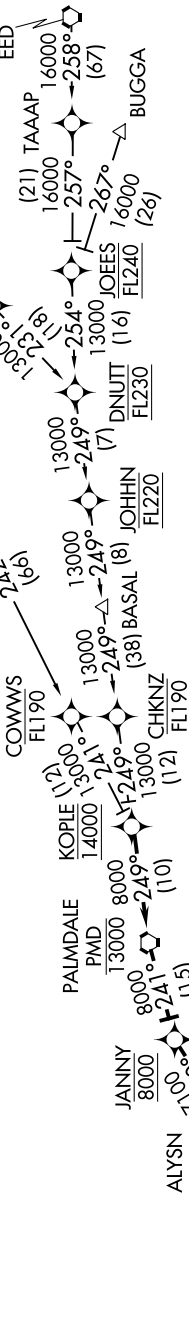
NOTE: RNAV 1.

NOTE: DME/DME/IRU or GPS required.

NOTE: Turbojet and turboprop aircraft only.

NOTE: KREME TRANSITION restricted to KLAS departures only.

NOTE: WNCHL TRANSITION ATC assigned only.



ARRIVAL ROUTE DESCRIPTION

- BUGGA TRANSITION (BUGGA.GUERA1)
- NEEDLES TRANSITION (EED.GUERA1)
- KREME TRANSITION (KREME.GUERA1)
- PURSE TRANSITION (PURSE.GUERA1)
- WELUM TRANSITION (WELUM.GUERA1)
- WNCHL TRANSITION (WNCHL.GUERA1)

LANDING KNTD RWY 21: From GUERA on track 231° to FIM VORTAC.

Expect ILS or LOC RWY 21.

LANDING KOXR/KCMA: From GUERA on track 199° to cross SESPE at 5300, then on track 198° to DOOBY, then on track 198°. Expect RADAR vectors to final approach course.

NOTE: Chart not to scale.