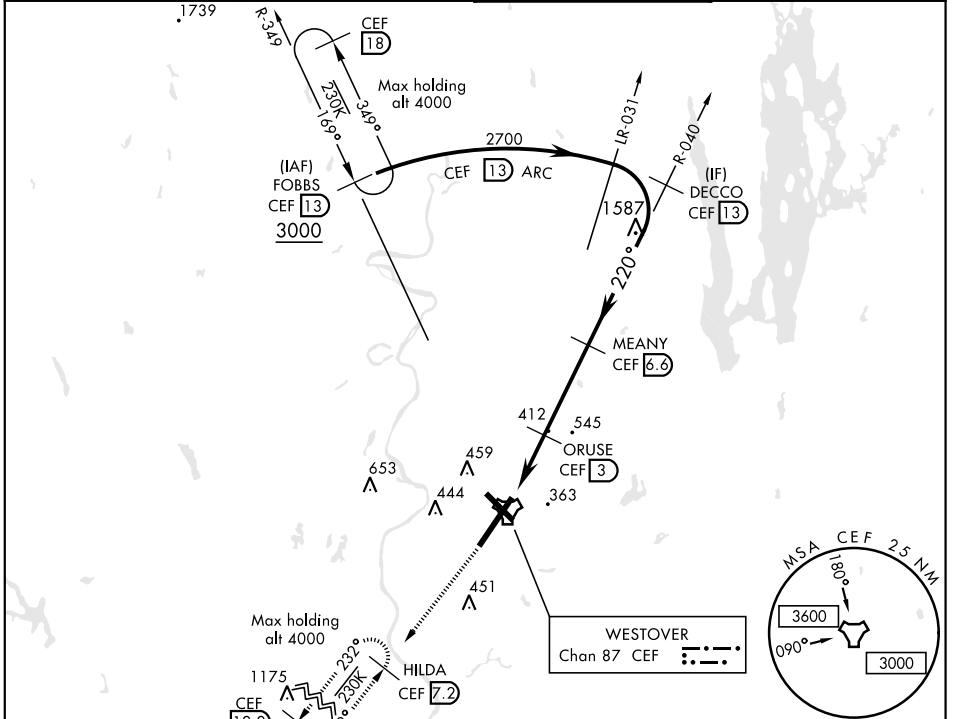


# TACAN RWY 23

TACAN CEF Chan <b>87</b>	APCH CRS <b>220°</b>	Rwy ldg <b>11,598</b> TDZE <b>241</b> Arpt Elev <b>241</b>	AL-447 [USAF]	WESTOVER ARB METROPOLITAN (KCEF)
▼ * When ALS inop, increase CAT AB RVR to 55 and vis to 1 mile, CAT CDE vis to 1½. ** Circling not authorized all CAT acft from RWY 23 clockwise to RWY 33.			ALSF-1 	MISSED APPROACH: Climb to 2500 via CEF R-232 to HILDA and hold, expect radar vectors.

ATIS ★ <b>127.525</b>	BRADLEY APP CON <b>125.35 281.5</b>	WESTOVER TOWER ★ <b>134.85 (CTAF) 348.75</b>	GND CON <b>118.35 275.8</b>
--------------------------	--	---	--------------------------------

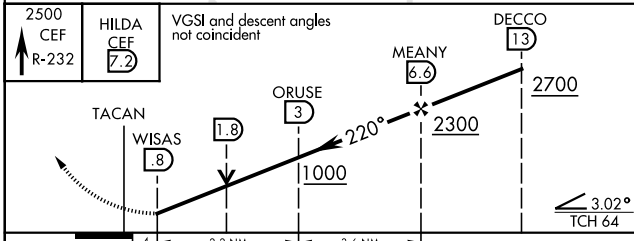


NE-1, 21 JUN 2018 to 19 JUL 2018

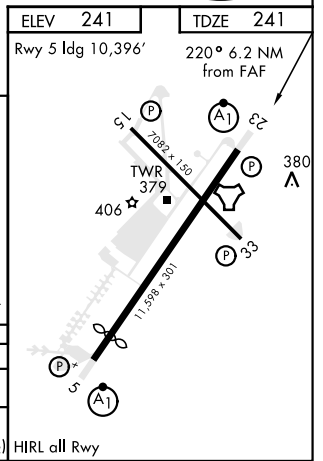
NE-1, 21 JUN 2018 to 19 JUL 2018

## RADAR REQUIRED

EMERG SAFE ALT 100 NM 6400



	.4	2.2 NM	3.6 NM		
CATEGORY	A	B	C	D	E
S-23*	760/24 519 (600-½)		760/55 519 (600-1)		
CIRCLING**	780-1 539 (600-1)	800-1 559 (600-1)	820-1½ 579 (600-1½)	960-2¼ 719 (800-2¼)	980-2½ 739 (800-2½)



# TACAN RWY 23