

RNAV (GPS) RWY 23

APCH CRS	Rwy Idg	11,598
228°	TDZE	241
	Arprt Elev	241

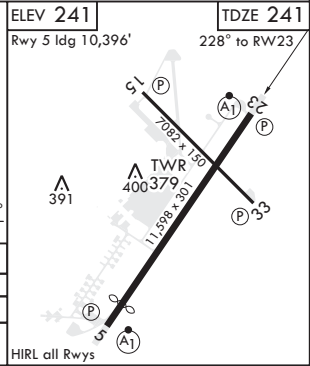
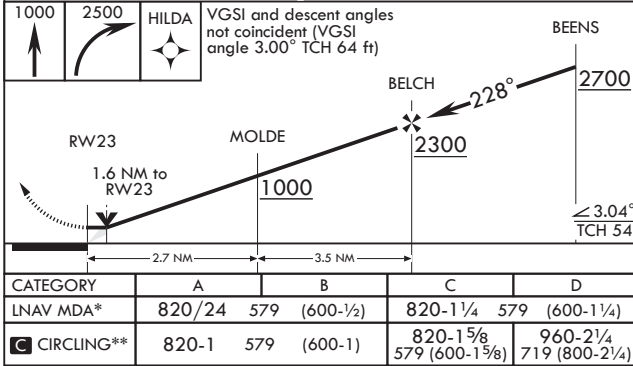
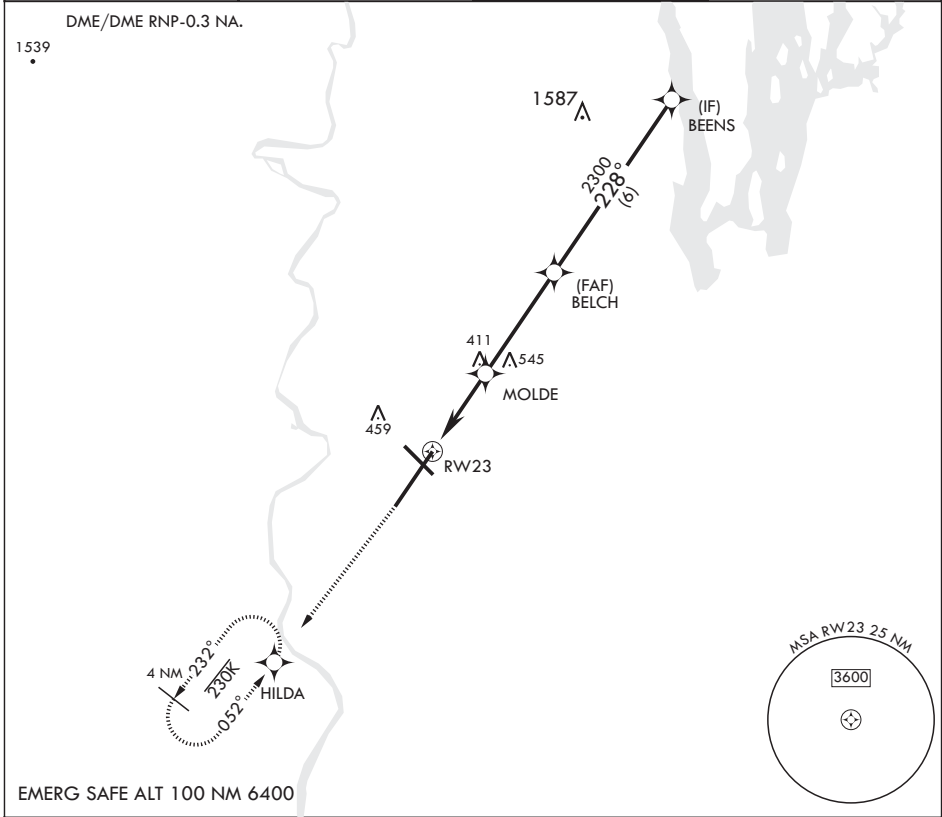
AL-447 (USAF)

WESTOVER ARB METROPOLITAN (KCEF)

⚠ * When ALS inop increase CAT AB RVR to 55, vis to 1 mile; CAT CD vis to 1 5/8 miles.
 ** Circling not authorized all CAT acft from Rwy 23 clockwise to Rwy 33.

ALSF-1 MISSED APPROACH: Climb to 1000 then climbing right turn to 2500 direct HILDA and hold. Expect radar vectors.

ATIS★ 127.525	BRADLEY APP CON 125.35 281.5	TOWER★ 134.85 (CTAF) 348.75	GND CON 118.35 275.8
------------------	---------------------------------	--------------------------------	-------------------------



CIRCLING**	820-1	579	(600-1)	820-1 1/4	579	(600-1 1/4)	820-1 5/8	579	(600-1 5/8)	960-2 1/4	719	(800-2 1/4)
------------	-------	-----	---------	-----------	-----	-------------	-----------	-----	-------------	-----------	-----	-------------

RNAV (GPS) RWY 23

NE-1, 21 JUN 2018 to 19 JUL 2018

NE-1, 21 JUN 2018 to 19 JUL 2018

DME/DME RNP-0.3 NA.

1539

EMERG SAFE ALT 100 NM 6400

VGSI and descent angles not coincident (VGSI angle 3.00° TCH 64 ft)

ELEV 241 | TDZE 241
 Rwy 5 Idg 10,396' | 228° to RWY 23

CATEGORY	A	B	C	D
LNAV MDA*	820/24	579 (600-1/2)	820-1 1/4	579 (600-1 1/4)
CIRCLING**	820-1	579 (600-1)	820-1 5/8	579 (600-1 5/8)
			960-2 1/4	719 (800-2 1/4)