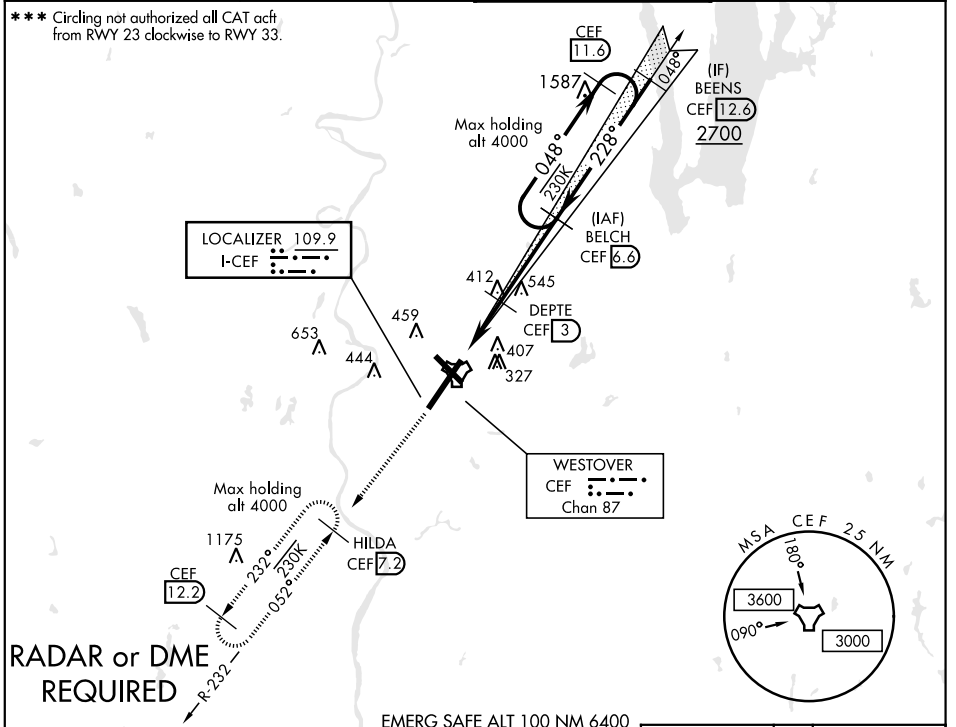


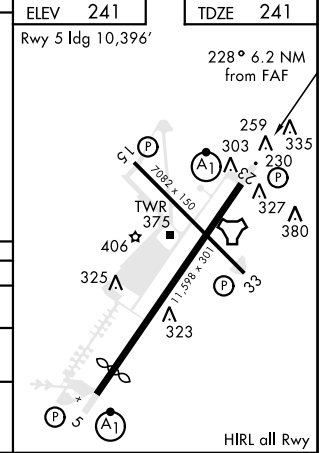
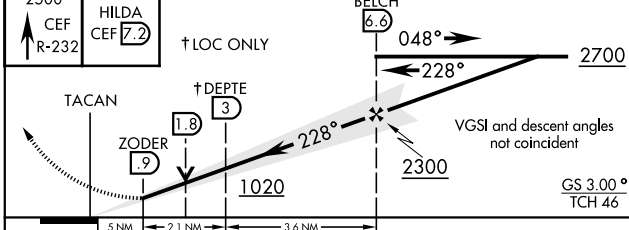
ILS or LOC RWY 23

LOC I-CEF 109.9	APCH CRS 228°	Rwy ldg 11,598 TDZE 241 Arpt Elev 241	AL-447 [USAF]	WESTOVER ARB METROPOLITAN (KCEF)
▼ * When ALS inop, increase RVR to 40 and vis to ¼ mile. ** When ALS inop, increase CAT AB RVR to 55 and vis to 1 mile, CAT CDE vis to 1 ½ miles.			ALSF-1 	MISSED APPROACH: Climb to 2500 via CEF R-232 to HILDA and hold. Expect radar vectors

ATIS ★ 127.525	BRADLEY APP CON 125.35 281.5	WESTOVER TOWER ★ 134.85 (CTAF) 348.75	GND CON 118.35 275.8
--------------------------	--	---	--------------------------------



EMERG SAFE ALT 100 NM 6400



CATEGORY	A	B	C	D	E
S-ILS 23 *	441/24		200	(200-½)	
S-LOC 23 **	760/24 519 (600-½)		760/55 519 (600-1)		
***	780-1	800-1	820-1 ½	960-2 ¼	980-2 ½
CIRCLING	539 (600-1)	559 (600-1)	579 (600-1 ½)	719 (800-2 ¼)	739 (800-2 ½)

ILS or LOC RWY 23

NE-1, 21 JUN 2018 to 19 JUL 2018

NE-1, 21 JUN 2018 to 19 JUL 2018