

| | | |
|--|------------------------|---|
| WAAS CH 72805 W02A | APP CRS 016° | Rwy Idg TDZE 1173 Apt Elev 1194 |
|--|------------------------|---|

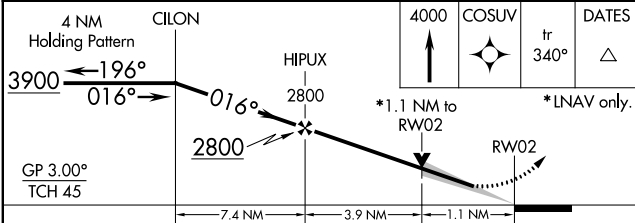
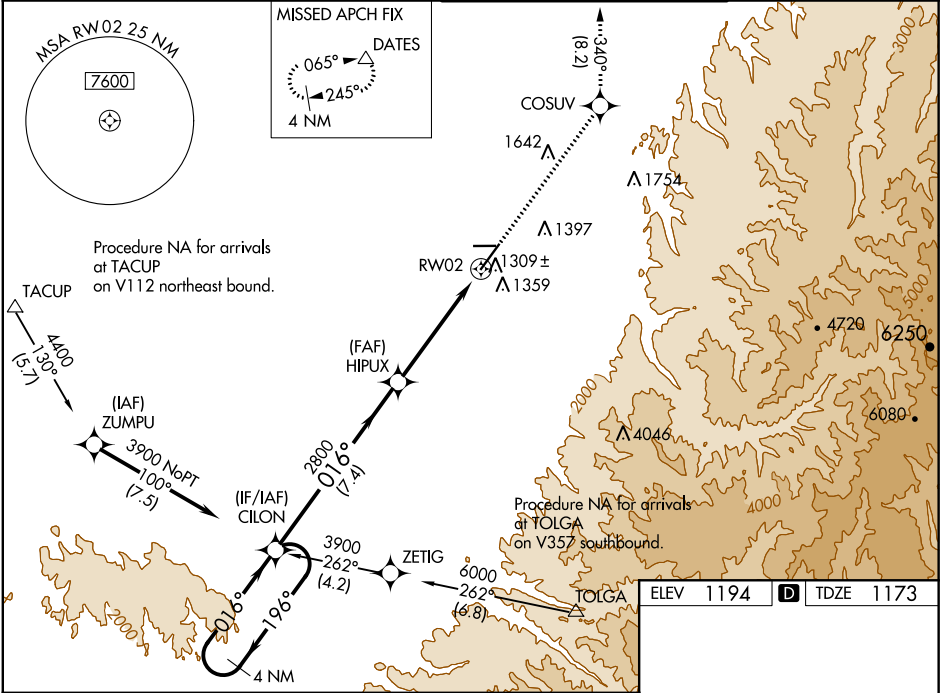
RNAV (GPS) RWY 2

WALLA WALLA RGNL (ALW)

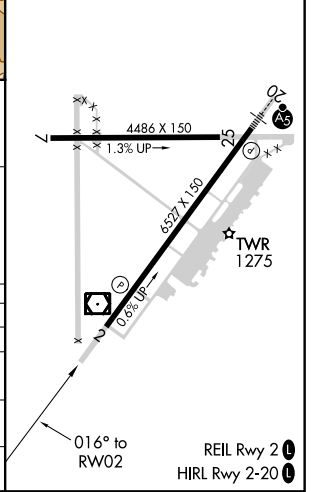
⚠ For uncompensated Baro-VNAV systems, LNAV/VNAV NA below -11°C (13°F) or above 54°C (130°F). DME/DME RNP-0.3 NA. When local altimeter setting not received, use Pendleton altimeter setting and increase all DA/MDA 120 feet and LPV all visibilities ¼ mile, LNAV/VNAV all visibilities ⅓ mile, LNAV Cats C/D visibility ⅓ mile, and Circling Cat C visibility ¼ mile. VDP and Baro-VNAV NA when using Pendleton altimeter setting.

⚠ MISSED APPROACH: Climb to 4000 direct COSUV and on track 340° to DATES and hold.

| | | | |
|------------------------|---|--|-------------------------------|
| ASOS 135.875 | CHINOOK APP CON * 133.15 379.15 | WALLA WALLA TOWER * 118.5 (CTAF) 0 289.4 | GND CON 121.6 289.4 |
|------------------------|---|--|-------------------------------|



| | |
|-----------|-----------|
| ELEV 1194 | TDZE 1173 |
|-----------|-----------|



| CATEGORY | A | B | C | D |
|-------------------|-----------------------|-----------------------|--------------------------------|-------------------------|
| LPV DA | | 1373-3/4 | 200 (200-3/4) | |
| LNAV/VNAV DA | | 1509-1 1/8 | 336 (400-1 1/8) | |
| LNAV MDA | 1560-1 | 387 (400-1) | 1560-1 1/8 | 387 (400-1 1/8) |
| C CIRCLING | 1760-1 566 (600-1) | 1820-1 626 (700-1) | 2120-2 3/4 926 (1000-2 3/4) | 2300-3 1106 (1200-3) |

NW-1, 21 JUN 2018 to 19 JUL 2018

NW-1, 21 JUN 2018 to 19 JUL 2018