


LOC I-ALW <b>111.7</b>	APP CRS <b>196°</b>	Rwy Idg <b>6527</b> TDZE <b>1194</b> Apt Elev <b>1194</b>
---------------------------	------------------------	--

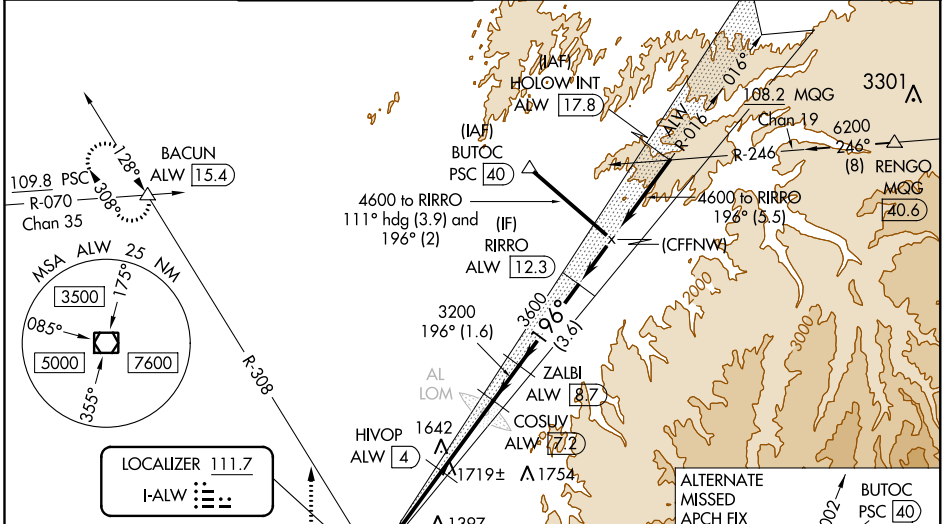
# ILS Z or LOC/DME RWY 20

WALLA WALLA RGNL (ALW)

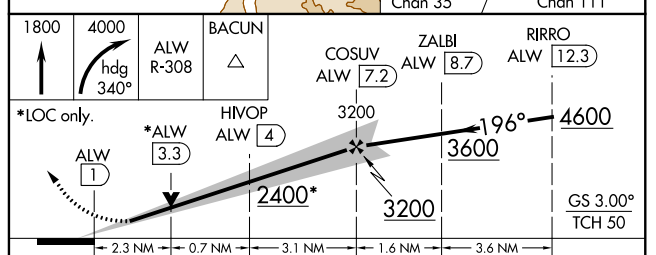
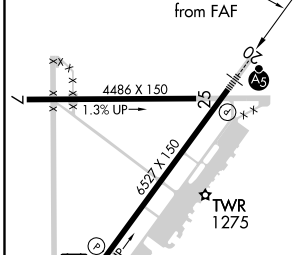
**▼** DME required. When local altimeter setting not received, use Pendleton altimeter setting and increase all DA and all MDA 120 feet, increase S-ILS 20 visibility to RVR 3200, increase S-LOC 20 Cat A visibility 3/8 mile, Cat C and D visibility 1/4 mile and Circling Cat A and C/D visibility 1/4 mile. VDP NA when using Pendleton altimeter setting. For inoperative MALSRS, when using Pendleton altimeter setting, increase S-ILS 20 all Cats visibility to 5000 RVR. DME from ALW VOR/DME. Simultaneous reception of I-ALW and ALW VOR/DME required. For inoperative MALSRS, increase S-LOC 20 Cat C/D visibility 3/4 mile. # RVR 1800 authorized with use of FD or AP or HUD to DA.

**MALSRS**  
  
 MISSED APPROACH: Climb to 1800 then climbing right turn to 4000 on heading 340° and ALW VOR/DME R-308 to BACUN INT/ALW 15.4 DME and hold.

ASOS <b>135.875</b>	CHINOOK APP CON ★ <b>133.15 379.15</b>	WALLA WALLA TOWER ★ <b>118.5 (CTAF) 289.4</b>	GND CON <b>121.6 289.4</b>
------------------------	---	--	-------------------------------



ELEV 1194	<b>D</b>	TDZE 1194
-----------	----------	-----------



REIL Rwy 20	HIRL Rwy 2-20					
1800	4000	ALW R-308	BACUN	COSUV ALW 7.2	ZALBI ALW 8.7	RIRRO ALW 12.3
*LOC only.		*ALW 3.3	HIVOP ALW 4	3200	196°	4600
		ALW 1		2400*	3600	3200
		2.3 NM	0.7 NM	3.1 NM	1.6 NM	3.6 NM
CATEGORY	A		B		C	D
S-ILS 20#	1394/24		200 (200-1/2)			
S-LOC 20	1980/24 786 (800-1/2)	1980/40 786 (800-3/4)	1980-1 3/4 786 (800-1 3/4)	786 (800-1 3/4)		
<b>C</b> CIRCLING	1980-1 786 (800-1)	1980-1 1/4 786 (800-1 1/4)	2120-2 3/4 926 (1000-2 3/4)	2300-3 1106 (1200-3)		

NW-1, 21 JUN 2018 to 19 JUL 2018

NW-1, 21 JUN 2018 to 19 JUL 2018