

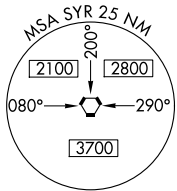
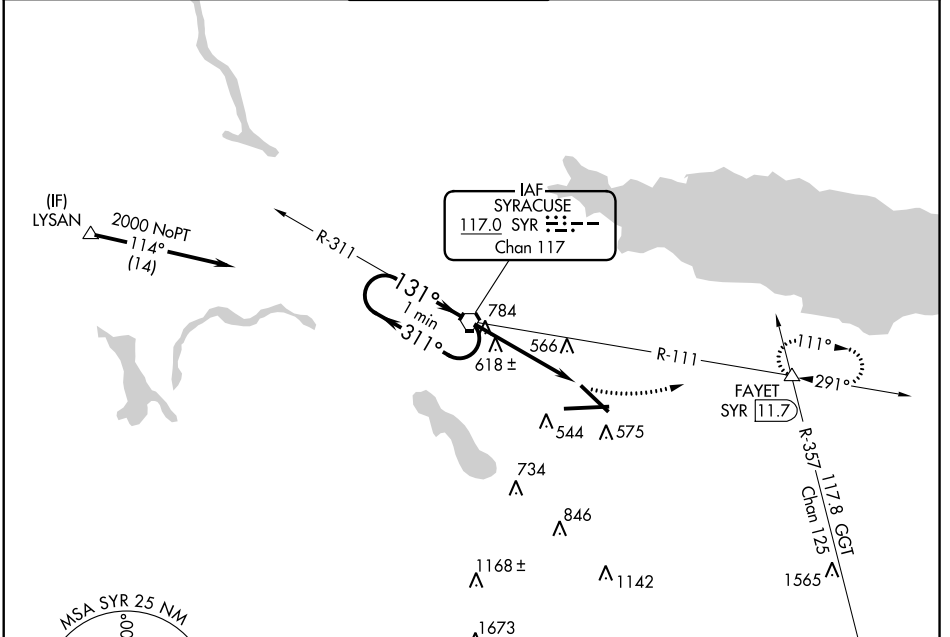
VORTAC SYR <b>117.0</b> Chan <b>117</b>	APP CRS <b>131°</b>	Rwy ldg TDZE Apt Elev <b>7500</b> <b>417</b> <b>421</b>
---	------------------------	--

# VOR RWY 15

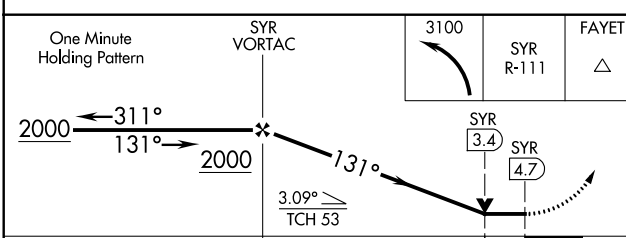
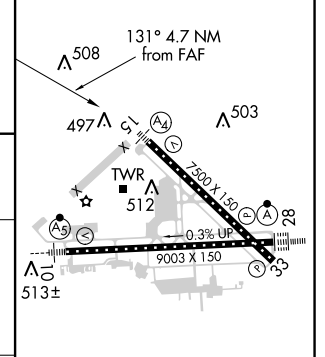
SYRACUSE HANCOCK INTL (SYR)

<p><b>▼</b> Inoperative table does not apply. Helicopter visibility reduction below 3/4 SM NA.</p>	<p>MALS A4</p>	<p>MISSED APPROACH: Climbing left turn to 3100 via SYR R-111 to FAYET Int/SYR 11.7 DME and hold, continue climb-in-hold to 3100.</p>
	<p>ATIS <b>124.225</b>    SYRACUSE APP CON <b>134.275 279.6</b>    SYRACUSE TOWER <b>120.3 239.0</b>    GND CON <b>121.7 348.6</b>    CLNC DEL <b>125.05 257.775</b></p>	

ATIS <b>124.225</b>	SYRACUSE APP CON <b>134.275 279.6</b>	SYRACUSE TOWER <b>120.3 239.0</b>	GND CON <b>121.7 348.6</b>	CLNC DEL <b>125.05 257.775</b>
------------------------	--	--------------------------------------	-------------------------------	-----------------------------------



ELEV 421	<b>D</b> TDZE 417
----------	-------------------



CATEGORY	A	B	C	D
S-15	880-1	463 (500-1)	880-1 3/8	463 (500-1 3/8)
CIRCLING	880-1 459 (500-1)	900-1 479 (500-1)	900-1 1/2 479 (500-1 1/2)	980-2 559 (600-2)

TDZ/CL Rwy 28					
HIRL Rwy 10-28 and 15-33					
FAF to MAP 4.7 NM					
Knots	60	90	120	150	180
Min:Sec	4:42	3:08	2:21	1:53	1:34

NE-2, 21 JUN 2018 to 19 JUL 2018

NE-2, 21 JUN 2018 to 19 JUL 2018