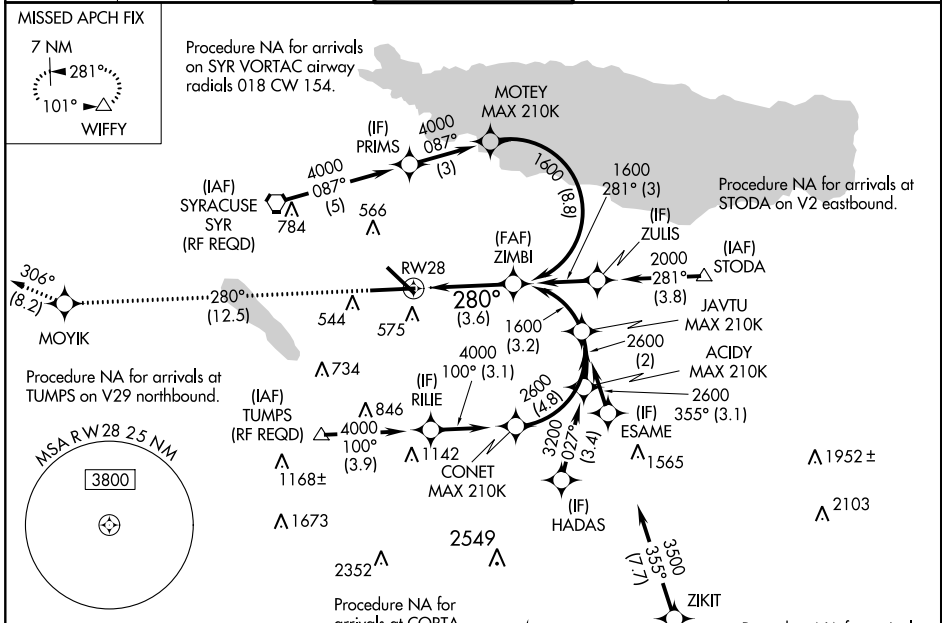


APP CRS	Rwy Idg	<b>9003</b>
<b>280°</b>	TDZE	<b>413</b>
	Apt Elev	<b>421</b>

# RNAV (RNP) Y RWY 28

SYRACUSE HANCOCK INTL (SYR)

<p><b>▽</b> GPS required. For uncompensated Baro-VNAV systems, procedure NA below -18°C (0°F) or above 54°C (130°F). For inoperative ALSF-2, increase RNP 0.15 all Cats visibility to 1½. For inoperative ALSF-2, increase RNP 0.30 all Cats visibility to 1¾.</p>	<p>ALSF-2</p>	<p>MISSED APPROACH: Climb to 3000 on track 280° to MOYIK and on track 306° to WIFFY and hold.</p>	
	<p>ATIS</p> <p><b>124.225</b></p>	<p>SYRACUSE APP CON</p> <p><b>134.275 279.6</b></p>	<p>SYRACUSE TOWER</p> <p><b>120.3 239.0</b></p>
		<p>GND CON</p> <p><b>121.7 348.6</b></p>	<p>CLNC DEL</p> <p><b>125.05 257.775</b></p>

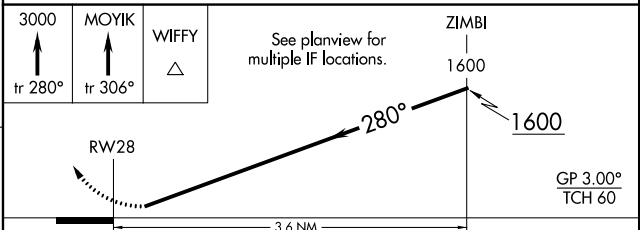


NE-2, 21 JUN 2018 to 19 JUL 2018

NE-2, 21 JUN 2018 to 19 JUL 2018

ELEV 421	<b>D</b>	TDZE 413
----------	----------	----------

TDZ/CL Rwy 28  
HIRL Rwy 10-28 and 15-33



CATEGORY	A	B	C	D
RNP 0.15 DA		862/55	449 (500-1½)	
RNP 0.30 DA		957-1¾	544 (600-1¾)	

## AUTHORIZATION REQUIRED