

LOC/DME I-SYR 109.9 Chan 36	APP CRS 280°	Rwy Idg TDZE Apt Elev	9003 413 421
---	------------------------	-----------------------------	---

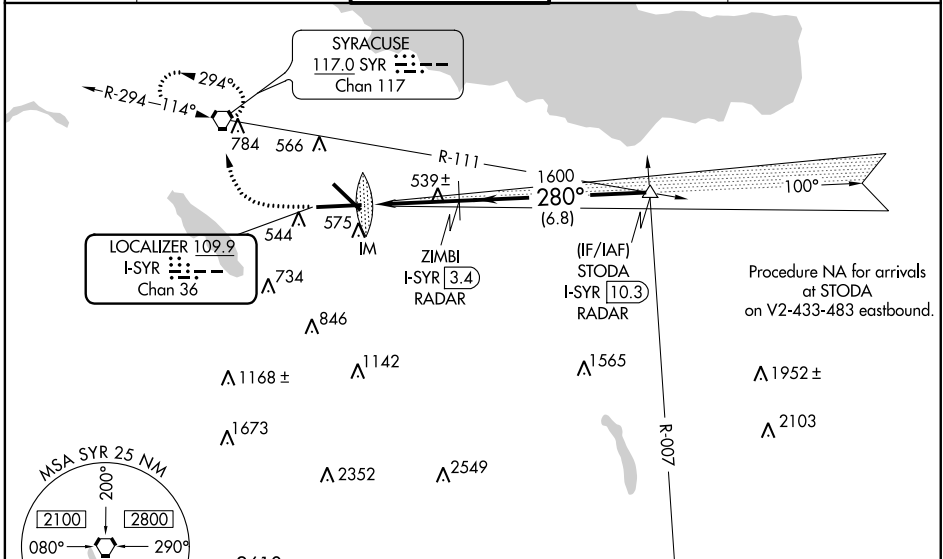
ILS or LOC RWY 28

SYRACUSE HANCOCK INTL (SYR)

ALSF-2 For inoperative ALSF-2, increase S-LOC 28 Cats A and B visibility to RVR 5500 and Cats C and D visibility to RVR 6000. DME or radar required.

MISSED APPROACH: Climb to 1100 then climbing right turn to 3000 direct SYR VORTAC and hold, continue climb-in-hold to 3000.

ATIS 124.225	SYRACUSE APP CON 134.275 279.6	SYRACUSE TOWER 120.3 239.0	GND CON 121.7 348.6	CLNC DEL 125.05 257.775
------------------------	--	--------------------------------------	-------------------------------	-----------------------------------

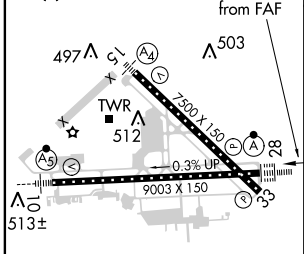


NE-2, 21 JUN 2018 to 19 JUL 2018

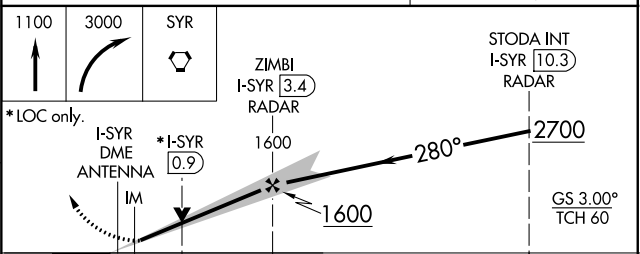
NE-2, 21 JUN 2018 to 19 JUL 2018



ELEV 421	D	TDZE 413
----------	----------	----------



TDZ/CL Rwy 28					
HIRL Rwys 10-28 and 15-33					
FAF to MAP 3.6 NM					
Knots	60	90	120	150	180
Min:Sec	3:36	2:24	1:48	1:26	1:12



CATEGORY	A	B	C	D
S-ILS 28	613/18 200 (200-½)			
S-LOC 28	800/24	387 (400-½)	800/35	387 (400-¾)
CIRCLING	880-1 459 (500-1)	900-1 479 (500-1)	900-1½ 479 (500-1½)	980-2 559 (600-2)