

WINCO TWO DEPARTURE (RNAV)

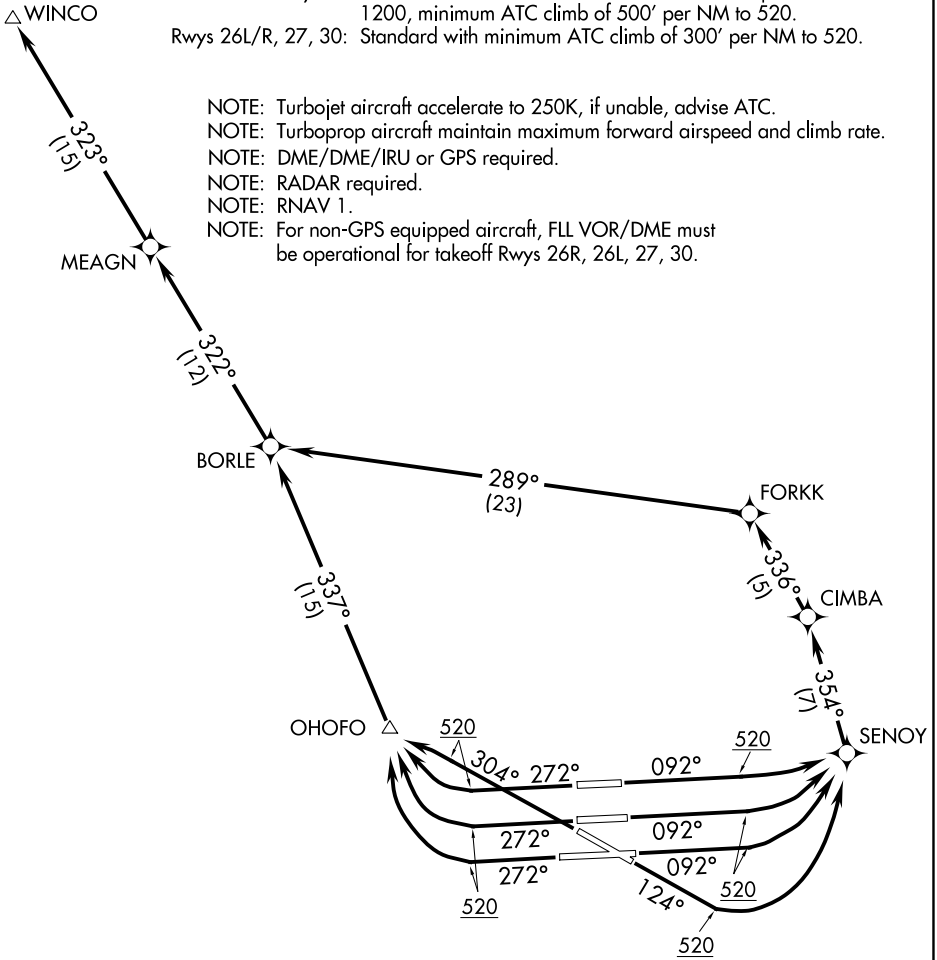
**TOP ALTITUDE:
5000**

D-ATIS 133.675
CLNC DEL 135.35
CPDLC
GND CON
121.8 348.6(8L/8R/12/26L/26R)
127.5 348.6(9/27/30)
MIAMI TOWER
118.3 256.9
MIAMI DEP CON
119.45 290.325

TAKEOFF MINIMUMS

- Rwy 8L: 300-1¼ or Standard with minimum obstacle climb of 382' per NM to 300, minimum ATC climb of 500' per NM to 520.
- Rwys 8R, 9: Standard with minimum ATC climb of 500' per NM to 520.
- Rwy 12: Standard with minimum obstacle climb of 229' per NM to 1200, minimum ATC climb of 500' per NM to 520.
- Rwys 26L/R, 27, 30: Standard with minimum ATC climb of 300' per NM to 520.

- NOTE: Turbojet aircraft accelerate to 250K, if unable, advise ATC.
- NOTE: Turboprop aircraft maintain maximum forward airspeed and climb rate.
- NOTE: DME/DME/IRU or GPS required.
- NOTE: RADAR required.
- NOTE: RNAV 1.
- NOTE: For non-GPS equipped aircraft, FLL VOR/DME must be operational for takeoff Rwys 26R, 26L, 27, 30.



(NARRATIVE ON FOLLOWING PAGE)

NOTE: Chart not to scale.

WINCO TWO DEPARTURE (RNAV)

(WINCO2.WINCO) 30APR15

MIAMI, FLORIDA
MIAMI INTL (MIA)

SE-3, 21 JUN 2018 to 19 JUL 2018

SE-3, 21 JUN 2018 to 19 JUL 2018