


WAAS CH 97404 W08B	APP CRS 092°	Rwy Idg 10506 TDZE 8 Apt Elev 9
----------------------------------------	------------------------	------------------------------------------------------------

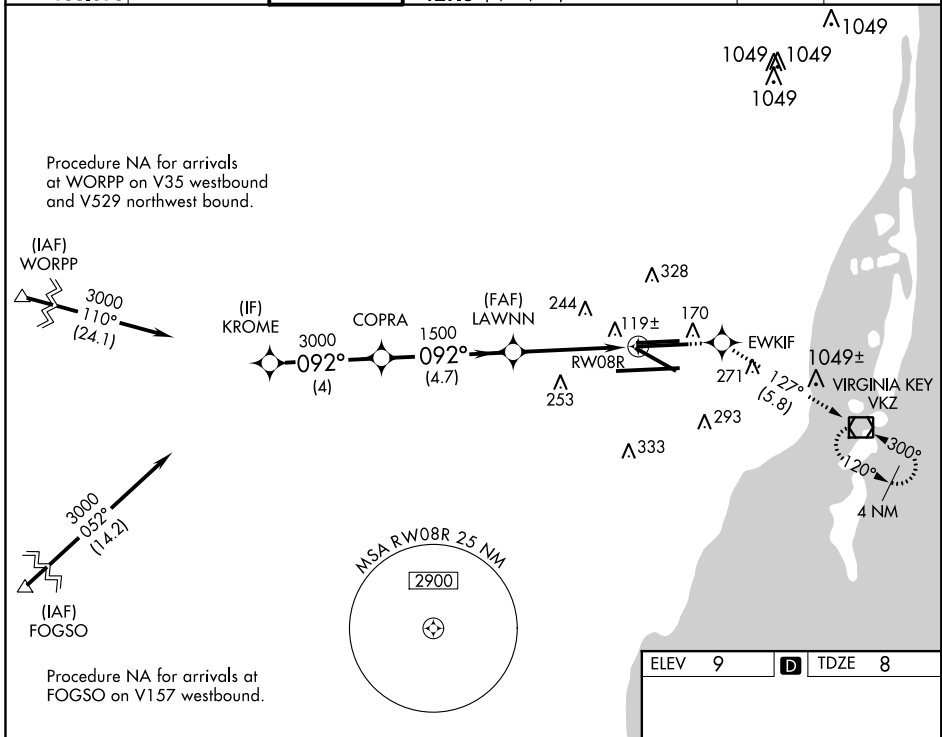
RNAV (GPS) Z RWY 8R

MIAMI INTL (MIA)

▼ For uncompensated Baro-VNAV systems, LNAV/VNAV NA below -15°C (5°F) or above 54°C (130°F). For inop MALSRL, increase LPV all Cats visibility to RVR 5000 and LNAV/VNAV all Cats visibility to 1½. DME/DME RNP-0.3 NA.

MALSRL  MISSED APPROACH: Climb to 3000 direct EWKIF and on track 127° to VKZ VOR/DME and hold.

D-ATIS ARR 119.15 DEP 133.675	MIAMI APP CON 124.85 322.3	MIAMI TOWER 118.3 256.9	GND CON 121.8 (8L/8R/12/26L/26R) 127.5 (9/27/30)	348.6	CLNC DEL 135.35	CPDLC
---------------------------------------------------	--------------------------------------	-----------------------------------	----------------------------------------------------------------------	--------------	---------------------------	-------

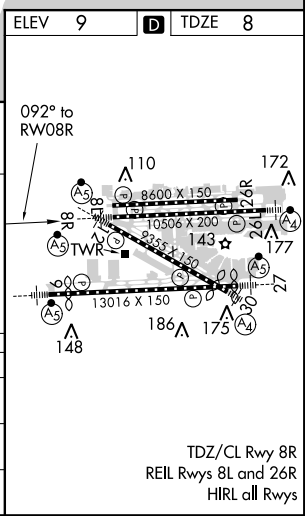


VGSI and RNAV glidepath not coincident (VGSI Angle 3.00/TCH 77).

	3000	EWKIF	tr 127°	VKZ

*RNAV only.

	KROME	COPRA	LAWNN	RW08R
GP 3.00° TCH 51	3000	3000	1500	1500
	4 NM	4.7 NM	2.9 NM	1.6 NM
CATEGORY	A	B	C	D
LPV DA		273/20	265 (300-½)	
LNAV/VNAV DA		530/60	522 (600-1¼)	
LNAV MDA	600/24	592 (600-½)	600/50 592 (600-1)	600/60 592 (600-1¼)



SE-3, 21 JUN 2018 to 19 JUL 2018

SE-3, 21 JUN 2018 to 19 JUL 2018