

MIAMI, FLORIDA

AL-257 (FAA)

17117

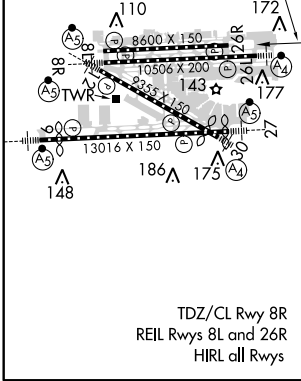
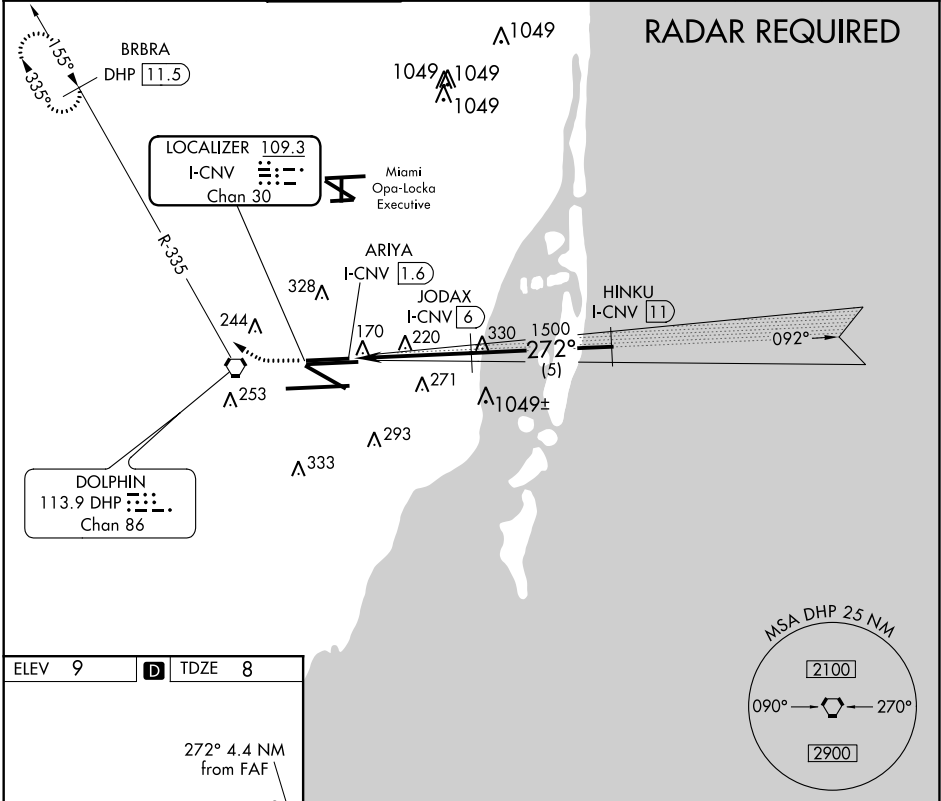
LOC/DME I-CNV <b>109.3</b> Chan 30	APP CRS <b>272°</b>	Rwy Idg TDZE Apt Elev	<b>8600</b> <b>8</b> <b>9</b>
--	------------------------	-----------------------------	-------------------------------------

# LOC/DME RWY 26R

MIAMI INTL (MIA)

**MISSED APPROACH:** Climb to 800 then climbing right turn to 2000 via heading 290° and DHP R-335 to BRBRA/11.5 DME and hold.

D-ATIS ARR <b>119.15</b> DEP <b>133.675</b>	MIAMI APP CON <b>124.85 322.3</b>	MIAMI TOWER <b>118.3 256.9</b>	GND CON <b>121.8</b> (8L/8R/12/26L/26R) <b>127.5</b> (9/27/30)	<b>348.6</b>	CLNC DEL <b>135.35</b>	CPDLC
---	--------------------------------------	-----------------------------------	--	--------------	---------------------------	-------



ELEV 9	D	TDZE 8		
800	2000	hdg 290°		
DHP R-335	BRBRA DHP 11.5	* 1500 when directed by ATC.		
ARIYA I-CNV 1.6	JODAX I-CNV 6	HINKU I-CNV 11		
1.3	3.1 NM	5 NM		
CATEGORY	A	B	C	D
S-26R	480-1	472 (500-1)	480-1¼ 472 (500-1¼)	480-1½ 472 (500-1½)
CIRCLING	NA			

MIAMI, FLORIDA  
Orig-B 07MAY09

25°48'N-80°17'W

# MIAMI INTL (MIA) LOC/DME RWY 26R

SE-3, 21 JUN 2018 to 19 JUL 2018

SE-3, 21 JUN 2018 to 19 JUL 2018