

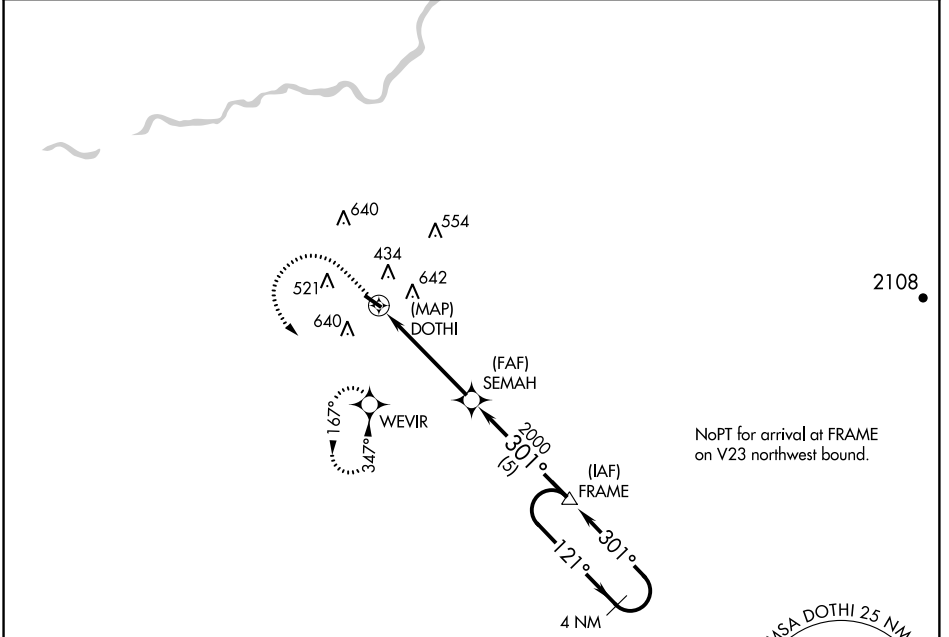
APP CRS	Rwy Idg	3089
	TDZE	280
301°	Apt Elev	280

GPS RWY 30

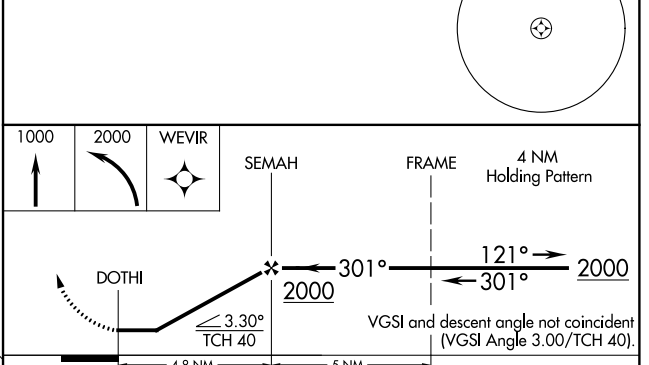
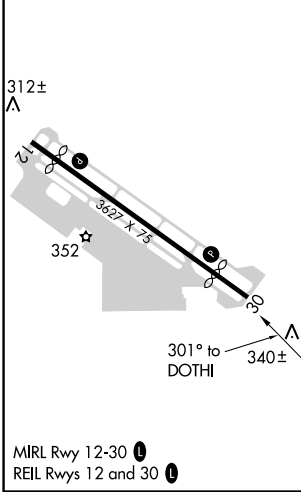
FRESNO CHANDLER EXECUTIVE (F'CH)

<p>▽ If local altimeter setting not received, use Fresno Yosemite Int'l altimeter setting and increase all MDAs 20 feet. Helicopter visibility reduction below $\frac{3}{4}$ SM NA.</p> <p>△ NA</p>	<p>MISSED APPROACH: Climb to 1000 then climbing left turn to 2000 direct WEVIR WP and hold.</p>

<p>AWOS-3 135.225</p>	<p>FRESNO APP CON 119.0 323.25</p>	<p>UNICOM 123.0 (CTAF) 0</p>
-----------------------------------	--	--



ELEV 280	TDZE 280
----------	----------



CATEGORY	A	B	C	D
S-30	900-1	620 (700-1)	900-1 $\frac{3}{4}$ 620 (700-1 $\frac{3}{4}$)	NA
CIRCLING	1020-1	740 (800-1)	1020-2 740 (800-2)	NA

SW-2, 21 JUN 2018 to 19 JUL 2018

SW-2, 21 JUN 2018 to 19 JUL 2018