

APP CRS 111°	Rwy Idg 3212
	TDZE 280
	Apt Elev 280

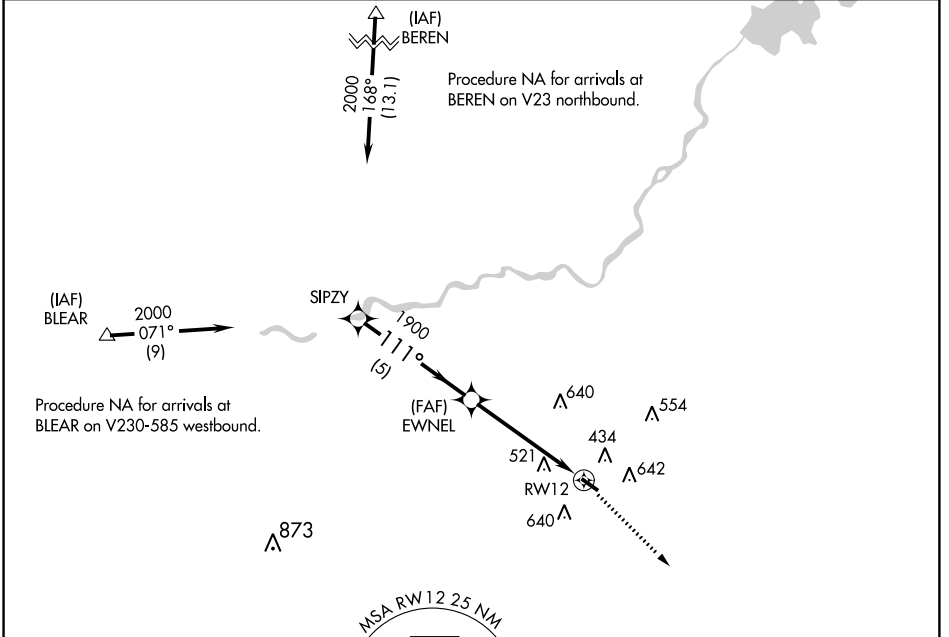
GPS RWY 12

FRESNO CHANDLER EXECUTIVE (F'CH)

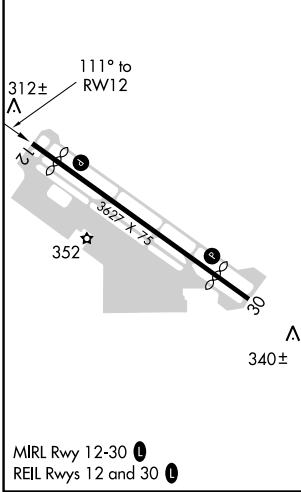
NA If local altimeter setting not received, use Fresno Yosemite Init altimeter setting and increase all MDAs 20 feet. Helicopter visibility reduction below 3/4 SM NA.

MISSED APPROACH: Climbing right turn to 2000 direct FRAME WP and hold.

AWOS-3 135.225	FRESNO APP CON 119.0 323.25	UNICOM 123.0 (CTAF) 0
--------------------------	---------------------------------------	---------------------------------



ELEV 280	TDZE 280
----------	----------



SIPZY	2000	EWNEL	2000	FRAME \triangle
	Procedure Turn NA		1900	
	111°		2.98° TCH 40	
	5 NM	5 NM		
CATEGORY	A	B	C	D
S-12	820-1	540 (600-1)	820-1½ 540 (600-1½)	NA
CIRCLING	1020-1	740 (800-1)	1020-2 740 (800-2)	NA

GPS RWY 12

SW-2, 21 JUN 2018 to 19 JUL 2018

SW-2, 21 JUN 2018 to 19 JUL 2018