

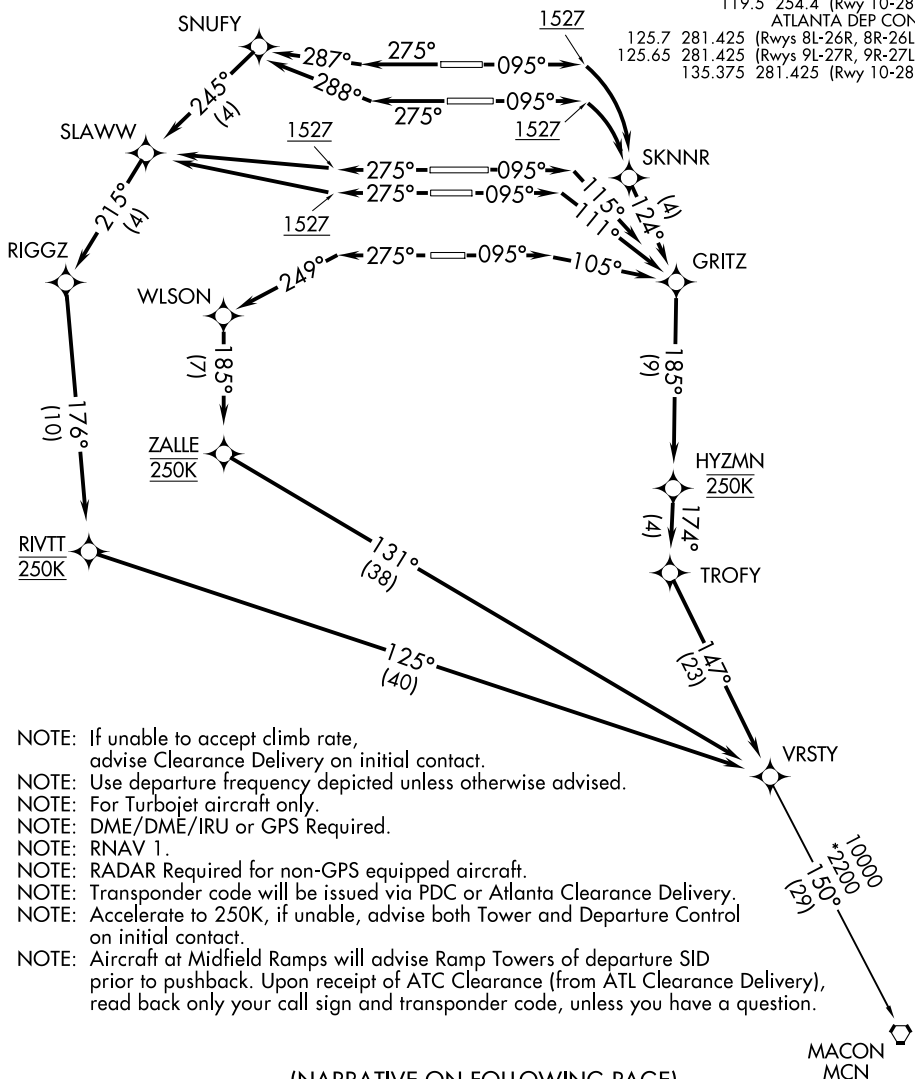
**TOP ALTITUDE:  
10000**

**TAKEOFF MINIMUMS:**

Rwys 8L/R, 9L/R, 10, 26L/R, 27L/R, 28:

Standard with minimum climb of 500' per NM to 1527.

D-ATIS	125.55
CLNC DEL	118.1
CPDLC	
GND CON	
121.9	254.4 (Rwys 8L-26R, 8R-26L)
121.75	254.4 (Rwys 9L-27R, 9R-27L)
121.65	254.4 (Rwy 10-28)
ATLANTA TOWER	
119.1	254.4 (Rwy 8L-26R)
125.325	254.4 (Rwy 8R-26L)
119.3	254.4 (Rwy 9R-27L)
123.85	254.4 (Rwy 9L-27R)
119.5	254.4 (Rwy 10-28)
ATLANTA DEP CON	
125.7	281.425 (Rwys 8L-26R, 8R-26L)
125.65	281.425 (Rwys 9L-27R, 9R-27L)
135.375	281.425 (Rwy 10-28)



- NOTE: If unable to accept climb rate, advise Clearance Delivery on initial contact.
- NOTE: Use departure frequency depicted unless otherwise advised.
- NOTE: For Turbojet aircraft only.
- NOTE: DME/DME/IRU or GPS Required.
- NOTE: RNAV 1.
- NOTE: RADAR Required for non-GPS equipped aircraft.
- NOTE: Transponder code will be issued via PDC or Atlanta Clearance Delivery.
- NOTE: Accelerate to 250K, if unable, advise both Tower and Departure Control on initial contact.
- NOTE: Aircraft at Midfield Ramps will advise Ramp Towers of departure SID prior to pushback. Upon receipt of ATC Clearance (from ATL Clearance Delivery), read back only your call sign and transponder code, unless you have a question.

(NARRATIVE ON FOLLOWING PAGE)

NOTE: Chart not to scale.

SE-4, 21 JUN 2018 to 19 JUL 2018

SE-4, 21 JUN 2018 to 19 JUL 2018