

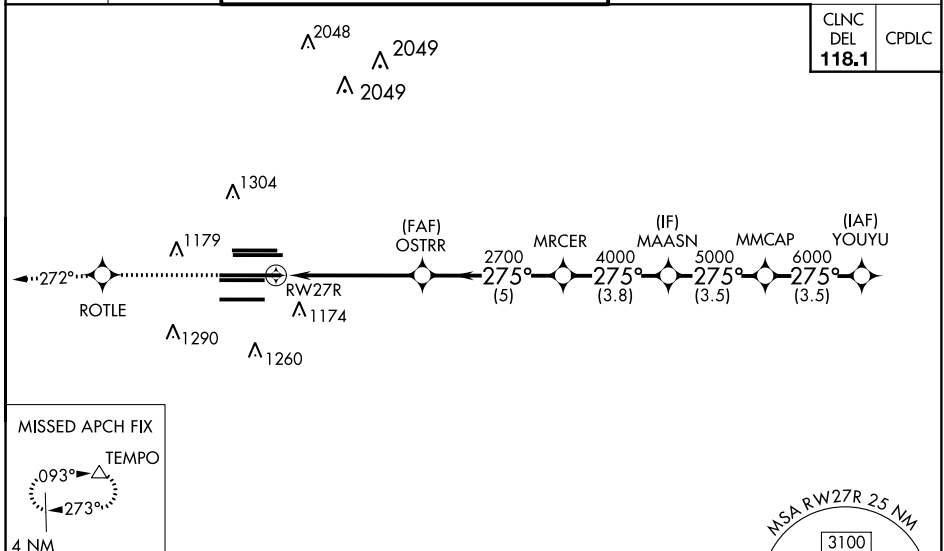
RNAV (GPS) PRM RWY 27R (SIMULTANEOUS CLOSE PARALLEL) HARTSFIELD-JACKSON ATLANTA INTL (ATL)

WAAS CH 70400 W27B	APP CRS 275°	Rwy Idg 11690 TDZE 985 Apt Elev 1026
--	------------------------	---

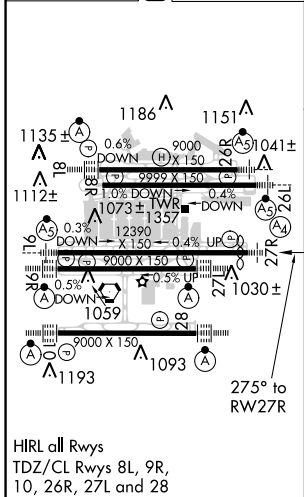
▼ For uncompensated Baro-VNAV systems, LNAV/VNAV NA below -7°C (20°F) or above 54°C (130°F). DME/DME RNP-0.3 NA. Simultaneous close parallel approach authorized with ILS PRM and RNAV PRM Rwy 26R or 26L or 28, or Rwys 26R and 28, or Rwys 26L and 28. Dual VHF Comm required. Use of FD or AP providing RNAV track guidance required during simultaneous operations. See additional requirements on AAUP. For inop MALS, increase LNAV/VNAV Cat D visibility to 1½ miles. Inop table does not apply to LPV, all Cats.

MALS 	MISSED APPROACH: Climb to 4000 direct ROTLE and on track 272° to TEMPO and hold.
----------	--

D-ATIS ARR 119.65 DEP 125.55	ATLANTA APP CON 127.9 379.9	ATLANTA TOWER 8L-26R 119.1 8R-26L 125.325 9L-27R 123.85 9R-27L 119.3 10-28 RWYS 119.5 254.4 PRM 132.55	ALL RWYS 121.9	GND CON 8L-26R,8R-26L 121.75 9L-27R,9R-27L 121.65 10-28 254.4	ALL RWYS
--	---------------------------------------	--	--------------------------	---	----------



ELEV 1026	D	TDZE 985
-----------	----------	----------



HIRL all Rwys
TDZ/CL Rwys 8L, 9R,
10, 26R, 27L and 28

RADAR REQUIRED

4000	ROTTLE	TEMPO	VGSi and RNAV glidepath not coincident (VGSi Angle 3.00/TCH 72).	
		tr 272°		
RWY 27R	OSTRR	MRCER	MAASN	MMCAP
2700	2700	4000	5000	6000
YOUYOU				7000
	5.2 NM	5 NM	3.8 NM	3.5 NM
				GP 3.00° TCH 56

CATEGORY	A	B	C	D
LPV DA		1185/40	200 (200-¾)	
LNAV/VNAV DA		1461-1¾	476 (500-1¾)	

ATLANTA, GEORGIA
Orig 18SEP14

33°38'N-84°26'W

HARTSFIELD-JACKSON ATLANTA INTL (ATL)

RNAV (GPS) PRM RWY 27R (SIMULTANEOUS CLOSE PARALLEL)

SE-4, 21 JUN 2018 to 19 JUL 2018

SE-4, 21 JUN 2018 to 19 JUL 2018