

RNAV (GPS) PRM RWY 26L (SIMULTANEOUS CLOSE PARALLEL) HARTSFIELD-JACKSON ATLANTA INTL (ATL)

WAAS CH 56300 W26A	APP CRS 275°	Rwy Idg TDZE 996 Apt Elev 1026	9999
---------------------------------	------------------------	--	-------------

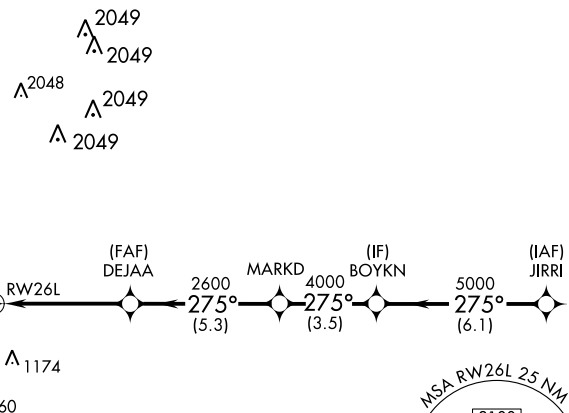
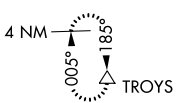
▼ For uncompensated Baro-VNAV systems, LNAV/VNAV NA below -7°C (20°F) or above 54°C (130°F). DME/DME RNP-0.3 NA. For inop MALSR, increase LPV all Cats visibility to RVR 4500 and LNAV/VNAV all Cats visibility to RVR 6000. Simultaneous close parallel approach authorized with ILS PRM and RNAV PRM Rwy 27R or 27L or 28, or Rwys 27R and 28, or Rwys 27L and 28. Dual VHF Comm required. Use of FD or AP providing RNAV track guidance required during simultaneous operations. See additional requirements on AAUP.



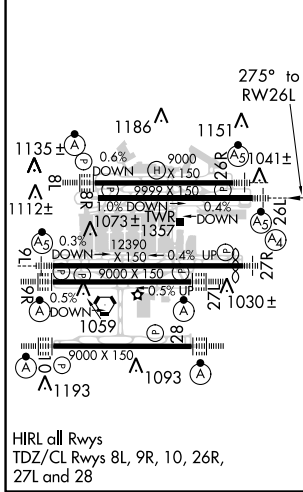
MISSED APPROACH:
Climb to 1500 then climbing right turn to 3500 direct TROYS and hold.

D-ATIS ARR 119.65 DEP 125.55	ATLANTA APP CON 127.9 379.9	ATLANTA TOWER ALL 8L-26R 8R-26L 9L-27R 9R-27L 10-28 RWYS 119.1 125.325 123.85 119.3 119.5 254.4 PRM 126.9	GND CON ALL RWYS (8L-26R,8R-26L) (9L-27R,9R-27L) 10-28 121.9 121.75 121.65 254.4
--	---------------------------------------	--	---

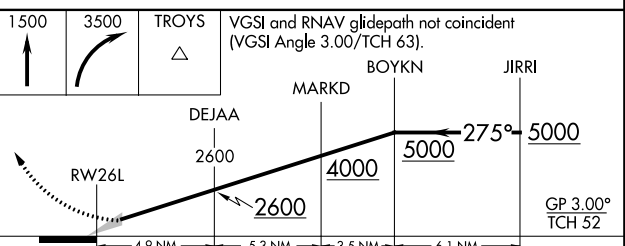
CLNC DEL 118.1	CPDLC
-----------------------------	-------



ELEV 1026	D	TDZE 996
-----------	----------	----------



RADAR REQUIRED



MARKD	BOYKN	JIRRI
DEJAA	2600	5000
RW26L	2600	5000
	4.9 NM	5.3 NM
	3.5 NM	6.1 NM
GP 3.00° TCH 52		
CATEGORY	A	B
LPV DA	1281/24	285 (300-½)
LNAV/VNAV DA	1360/35	364 (400-¾)

RNAV (GPS) PRM RWY 26L (SIMULTANEOUS CLOSE PARALLEL)

SE-4, 21 JUN 2018 to 19 JUL 2018

SE-4, 21 JUN 2018 to 19 JUL 2018