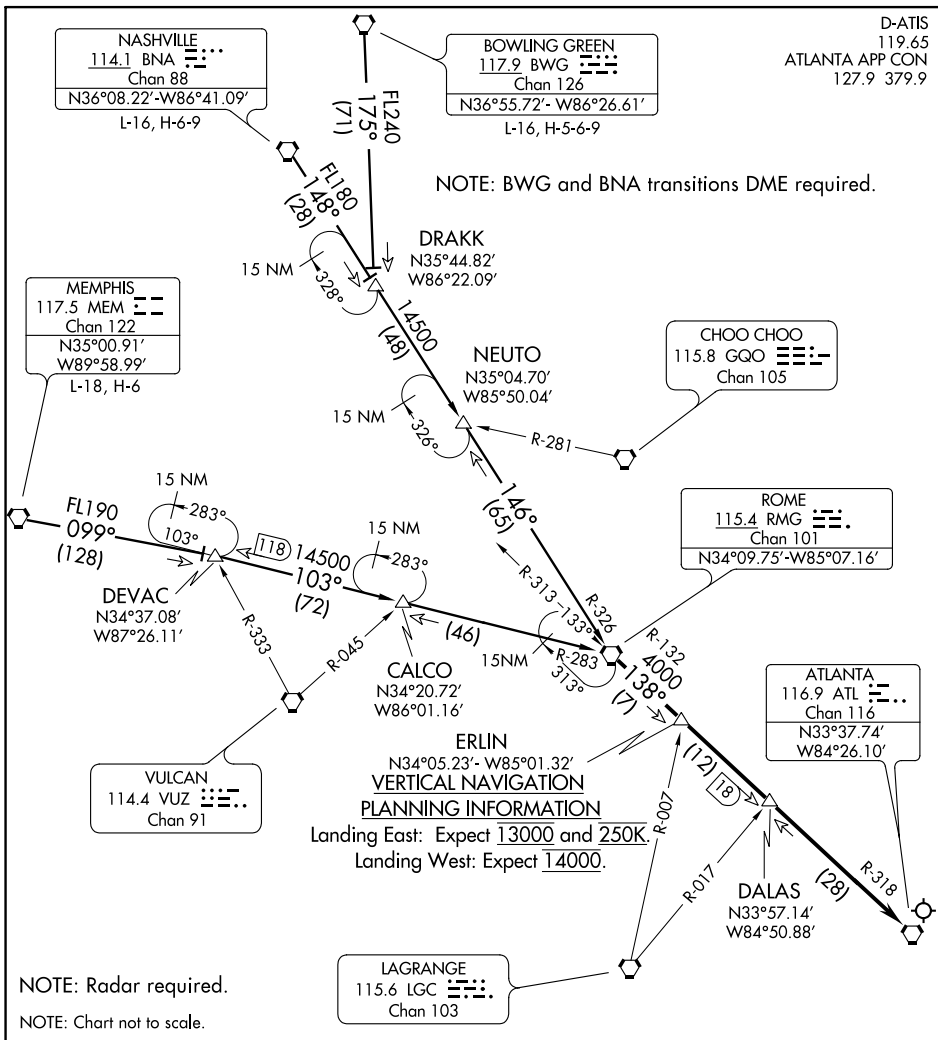


(RMG.RMG5) 18144
ROME FIVE ARRIVAL

HARTSFIELD-JACKSON ATLANTA INTL (ATL)
 ATLANTA, GEORGIA

AL-26 (FAA)

D-ATIS
 119.65
 ATLANTA APP CON
 127.9 379.9



**VERTICAL NAVIGATION
 PLANNING INFORMATION**
 Landing East: Expect 13000 and 250K.
 Landing West: Expect 14000.

ARRIVAL ROUTE DESCRIPTION

BOWLING GREEN TRANSITION (BWG.RMG5): From over BWG VORTAC via BWG R-175 to DRACK, then via BNA R-148 and RMG R-326 to RMG VORTAC. Thence. . .

MEMPHIS TRANSITION (MEM.RMG5): From over MEM VORTAC via MEM R-099 to DEVAC INT, then via RMG R-283 to RMG VORTAC. Thence. . .

NASHVILLE TRANSITION (BNA.RMG5): From over BNA VORTAC via BNA R-148 and RMG R-326 to RMG VORTAC. Thence. . .

. . . From over RMG VORTAC via ATL R-318 to ATL VORTAC. Expect radar vectors to final approach course after DALAS INT.

ROME FIVE ARRIVAL
 (RMG.RMG5) 15NOV12

ATLANTA, GEORGIA
 HARTSFIELD-JACKSON ATLANTA INTL (ATL)

SE-4, 21 JUN 2018 to 19 JUL 2018

SE-4, 21 JUN 2018 to 19 JUL 2018