

WAAS CH <b>97400</b> <b>W09B</b>	APP CRS <b>095°</b>	Rwy Idg TDZE Apt Elev	<b>9000</b> <b>1026</b> <b>1026</b>
--	------------------------	-----------------------------	---

# RNAV (GPS) RWY 9R

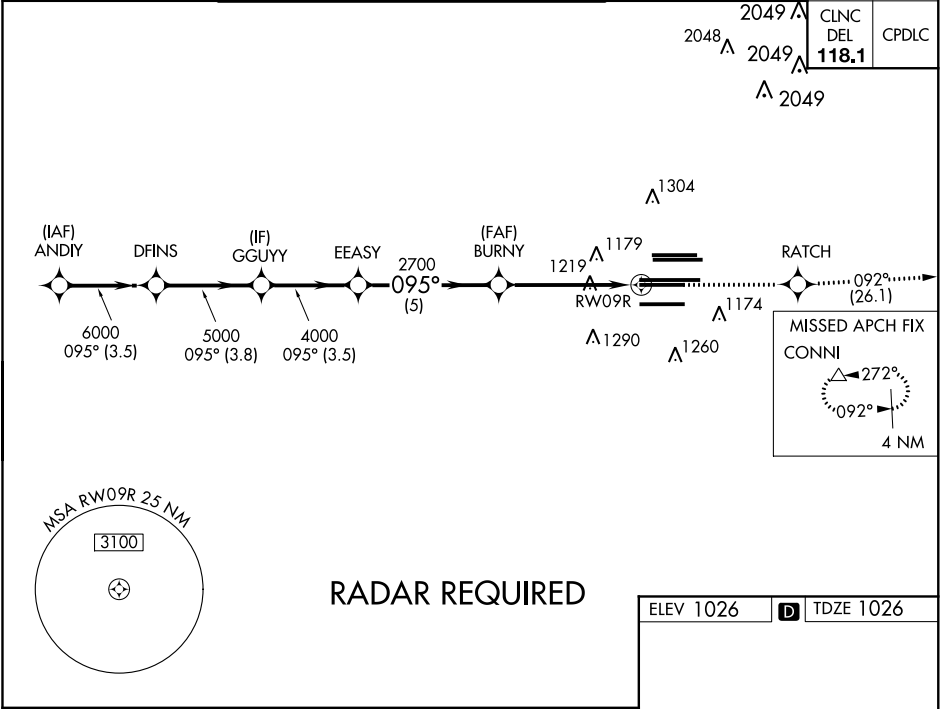
HARTSFIELD-JACKSON ATLANTA INTL (ATL)

**▽** For uncompensated Baro-VNAV systems, LNAV/VNAV NA below -7°C (20°F) or above 54°C (130°F). DME/DME RNP-0.3 NA. Simultaneous approach authorized with Rwy 8L or 8R. LNAV procedure NA during simultaneous operations. Use of FD or AP providing RNAV track guidance required during simultaneous operations.

ALSF-2

MISSED APPROACH: Climb to 4000 direct RATCH and on track 092° to CONNI and hold.

D-ATIS ARR <b>119.65</b>	ATLANTA APP CON	ATLANTA TOWER					ALL RWYS	GND CON	ALL RWYS
DEP <b>125.55</b>	<b>127.9 379.9</b>	8L-26R	8R-26L	9L-27R	9R-27L	10-28	(8L-26R,8R-26L)	(9L-27R,9R-27L)	10-28
		<b>119.1</b>	<b>125.325</b>	<b>123.85</b>	<b>119.3</b>	<b>119.5</b>	<b>121.9</b>	<b>121.75</b>	<b>121.65</b>
					<b>254.4</b>				<b>254.4</b>



VGSIs and RNAV glidepath not coincident (VGSi Angle 3.00/TCH 70).		4000	RATCH	tr 092°	CONNI
ANDIY	DFINS	GGUYY	EEASY	BURNY	RWY 09R
7000	6000	5000	4000	2700	2700
GP 3.00° TCH 56		*RNAV only.			
3.5 NM		3.8 NM	3.5 NM	5 NM	3.9 NM
A		B		C	
LPV DA	1226/18		200 (200-½)		
LNAV/VNAV DA	1403/40		377 (500-¾)		
LNAV MDA	1480/24	454 (500-½)		1480/45	454 (500-¾)

ELEV 1026 **D** TDZE 1026

HIRL all Rwys  
TDZ/CL Rwys 8L, 9R, 10, 26R,  
27L and 28

SE-4, 21 JUN 2018 to 19 JUL 2018

SE-4, 21 JUN 2018 to 19 JUL 2018