

# ILS PRM RWY 9R (SA CAT I) (SIMULTANEOUS CLOSE PARALLEL) HARTSFIELD-JACKSON ATLANTA INTL (ATL)

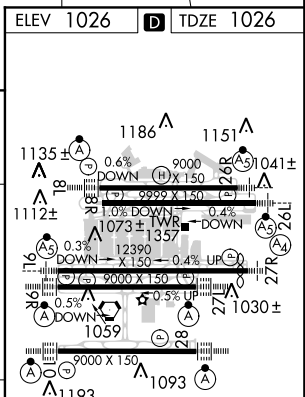
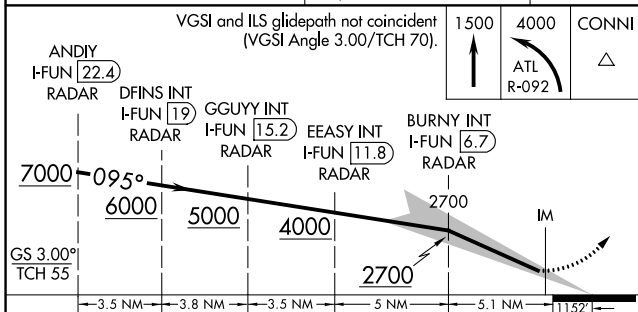
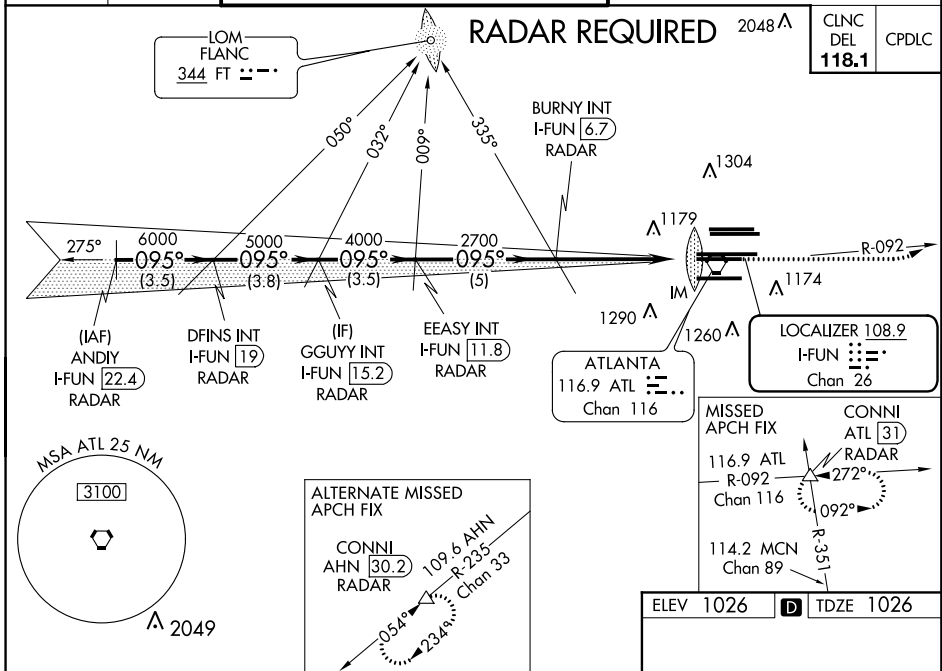
LOC/DME I-FUN <b>108.9</b> Chan <b>26</b>	APP CRS <b>095°</b>	Rwy Idg <b>8925</b> TDZE <b>1026</b> Apt Elev <b>1026</b>
-------------------------------------------------	------------------------	--------------------------------------------------------------------------

Simultaneous close parallel approach authorized with ILS PRM and RNAV PRM Rwy 8L or 8R or 10 or Rwy 8L and 10 or Rwy 8R and 10. Procedure NA when glideslope not available. Dual VHF comm required. See additional requirements on AAUP. ADF or DME or RADAR required. Requires specific OPSPEC, MSPEC, or LOA approval and use of HUD to DH.

**ALSF-2**  
MISSED APPROACH: Climb to 1500 then climbing left turn to 4000 on ATL VORTAC R-092 to CONNI INT/ATL 31 DME/RADAR and hold.

D-ATIS ARR <b>119.65</b> DEP <b>125.55</b>	ATLANTA APP CON <b>127.9 379.9</b>	ATLANTA TOWER 8L-26R 8R-26L 9L-27R 9R-27L 10-28 RWYS <b>119.1 125.325 123.85 119.3 119.5 254.4</b> PRM <b>132.55</b>	ALL RWYS <b>121.9 121.75 121.65 254.4</b>
--------------------------------------------------	------------------------------------------	-------------------------------------------------------------------------------------------------------------------------------	-------------------------------------------------

GND CON (8L-26R,8R-26L) (9L-27R,9R-27L) 10-28	ALL RWYS <b>121.9 121.75 121.65 254.4</b>
--------------------------------------------------	-------------------------------------------------



CATEGORY	A	B	C	D
5-ILS 9R	RA 196/14 150 DA 1176			

**SA CATEGORY I ILS - SPECIAL AIRCREW & AIRCRAFT CERTIFICATION REQUIRED**

HIRL all Rwys  
TDZ/CL Rwys 8L, 9R, 10, 26R, 27L and 28

SE-4, 21 JUN 2018 to 19 JUL 2018

SE-4, 21 JUN 2018 to 19 JUL 2018