

ATLANTA, GEORGIA

AL-26 (FAA)

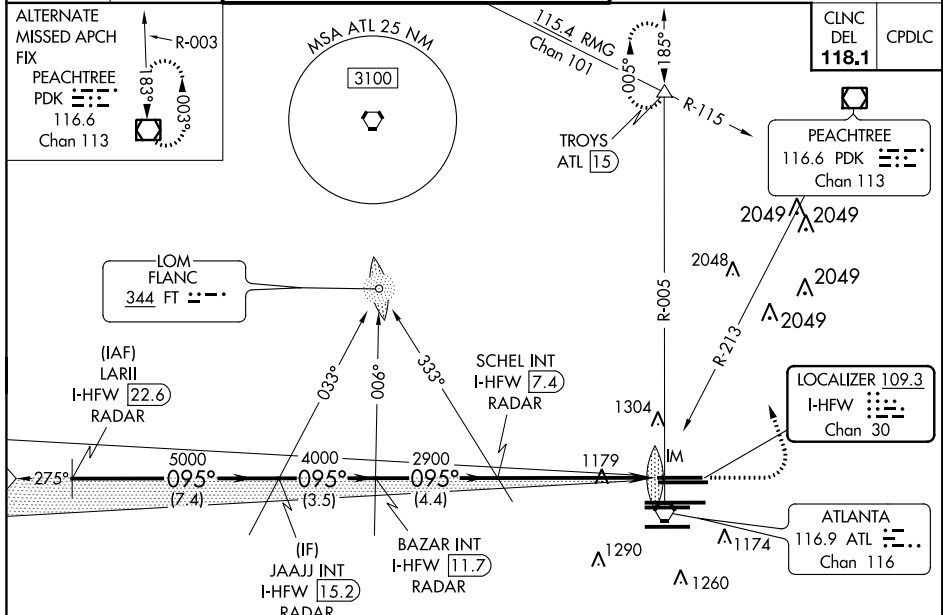
ILS PRM RWY 8L (CAT II & III)
(SIMULTANEOUS CLOSE PARALLEL)
 HARTSFIELD-JACKSON ATLANTA INTL (ATL)

LOC/DME I-HFW 109.3 Chan 30	APP CRS 095°	Rwy Idg TDZE Apt Elev	8800 1015 1026
---	------------------------	-----------------------------	---

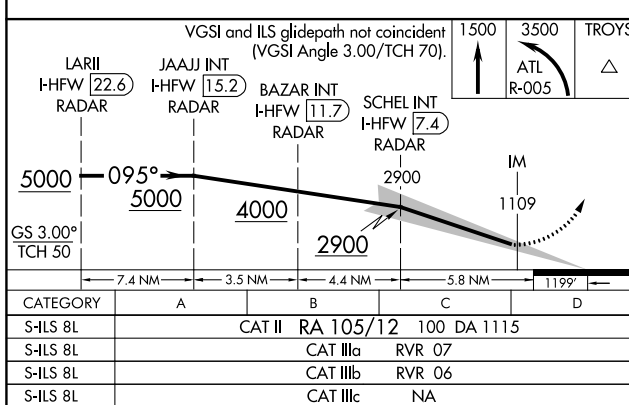
Simultaneous close parallel approach authorized with ILS PRM and RNAV PRM Rwy 9L or 9R or 10, or Rwy 9L and 10, or Rwy 9R and 10. Procedure not authorized when glideslope not available. Dual VHF comm required. See additional requirements on AAUP. ADF or DME or RADAR required.

ALSIF-2
 MISSED APPROACH: Climb to 1500 then climbing left turn to 3500 on ATL VORTAC R-005 to TROYS INT/ATL 15 DME and hold.

D-ATIS ARR 119.65 DEP 125.55	ATLANTA APP CON 127.9 379.9	ATLANTA TOWER 8L-26R 119.1 8R-26L 125.325 9L-27R 123.85 9R-27L 119.3 10-28 RWYS 119.5 10-28 RWYS 254.4 PRM 126.9	ALL RWYS 121.9	GND CON (8L-26R,8R-26L) (9L-27R,9R-27L) 10-28 121.75 121.65 254.4	ALL RWYS
--	--	---	-----------------------------	--	-------------



RADAR REQUIRED



ELEV 1026 TDZE 1015

HIRL all Rwws
 TDZ/CL Rwws 8L, 9R, 10, 26R,
 27L and 28

CATEGORY II & III ILS - SPECIAL AIRCREW & AIRCRAFT CERTIFICATION REQUIRED

ATLANTA, GEORGIA
 Amdt 2 18SEP14

33°38'N-84°26'W

HARTSFIELD-JACKSON ATLANTA INTL (ATL)

ILS PRM RWY 8L (CAT II & III) (SIMULTANEOUS CLOSE PARALLEL)

SE-4, 21 JUN 2018 to 19 JUL 2018

SE-4, 21 JUN 2018 to 19 JUL 2018