

ATLANTA, GEORGIA

AL-26 (FAA)

# ILS PRM RWY 8L

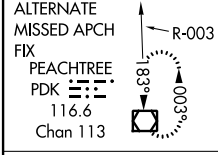
## (SIMULTANEOUS CLOSE PARALLEL) HARTSFIELD-JACKSON ATLANTA INTL (ATL)

LOC/DME I-HFW <b>109.3</b> Chan <b>30</b>	APP CRS <b>095°</b>	Rwy Idg TDZE Apt Elev	<b>8800</b> <b>1015</b> <b>1026</b>
---	------------------------	-----------------------------	---

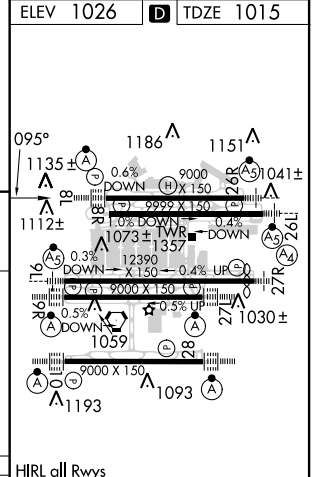
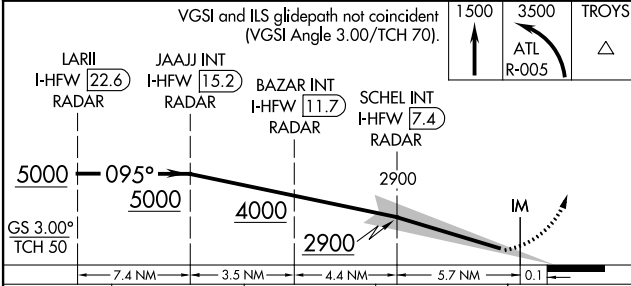
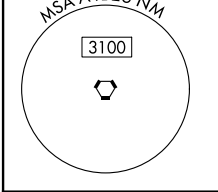
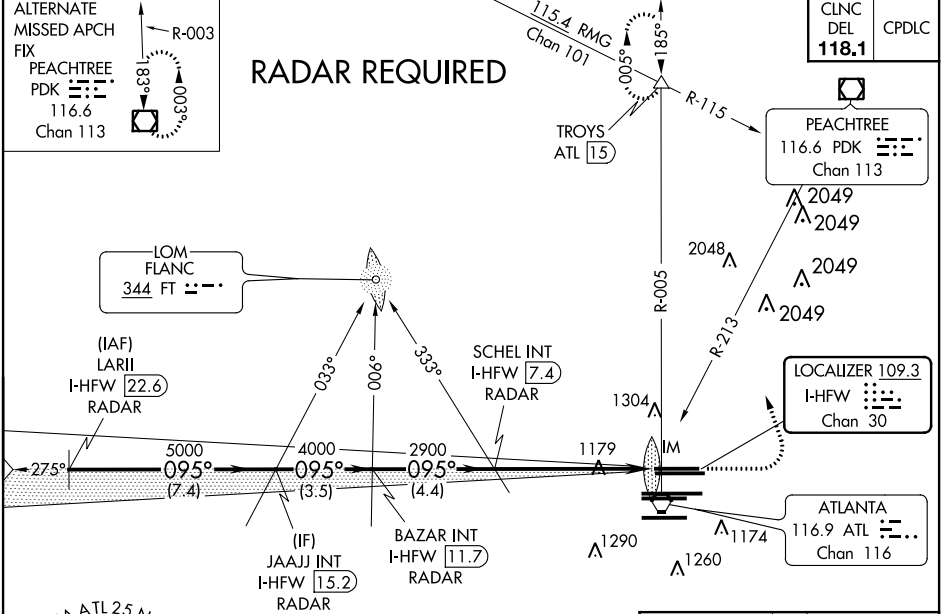
Simultaneous close parallel approach authorized with ILS PRM and RNAV PRM Rwy 9L or 9R or 10, or Rwy 9L and 10, or Rwy 9R and 10. Procedure not authorized when glideslope not available. Dual VHF comm required. See additional requirements on AAUP. ADF or DME or RADAR required.

ALSF-2  
MISSED APPROACH: Climb to 1500 then climbing left turn to 3500 on ATL VORTAC R-005 to TROYS INT/ATL 1.5 DME and hold.

D-ATIS ARR <b>119.65</b> DEP <b>125.55</b>	ATLANTA APP CON <b>127.9 379.9</b>	ATLANTA TOWER 8L-26R <b>119.1</b> 125.325 9L-27R <b>123.85</b> 9R-27L <b>119.3</b> 10-28 RWYS <b>119.5</b> PRM <b>126.9</b>	ALL RWYS 254.4	GND CON (8L-26R,8R-26L) <b>121.9</b> (9L-27R,9R-27L) <b>121.75</b> 10-28 <b>121.65</b>	ALL RWYS 254.4
--	--	--	-------------------	---	-------------------



### RADAR REQUIRED



CATEGORY	A	B	C	D
S-ILS 8L		1215/18	200 (200-1/2)	

ATLANTA, GEORGIA  
Amdt 2 18SEP14

33°38'N-84°26'W

HARTSFIELD-JACKSON ATLANTA INTL (ATL)

## ILS PRM RWY 8L (SIMULTANEOUS CLOSE PARALLEL)

SE-4, 21 JUN 2018 to 19 JUL 2018

SE-4, 21 JUN 2018 to 19 JUL 2018