


# ILS PRM RWY 28 (SA CAT I)

## (SIMULTANEOUS CLOSE PARALLEL)

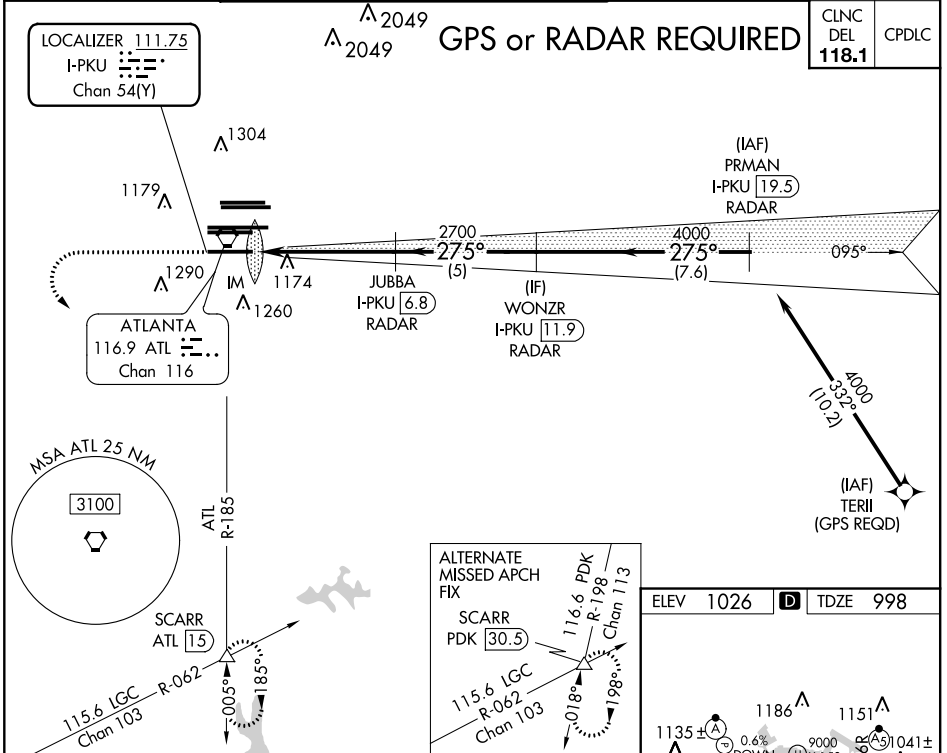
### HARTSFIELD-JACKSON ATLANTA INTL (ATL)

LOC/DME I-PKU <b>111.75</b> Chan <b>54</b> (Y)	APP CRS <b>275°</b>	Rwy Ldg <b>9000</b> TDZE <b>998</b> Apt Elev <b>1026</b>
--	------------------------	--

Simultaneous close parallel approach authorized with ILS PRM and RNAV PRM Rwy 26R or 26L or 27R or 27L or Rwy 26R and 27R, or Rwy 26R and 27L, or Rwy 26L and 27L, or Rwy 26L and 27L. Procedure not authorized when glideslope not available. Dual VHF comm required. See additional requirements on AAUP. Requires specific OPSPEC, MSPEC, or LOA approval and use of HUD to DH.

ALSIF-2  
  
 MISSED APPROACH: Climb to 1400 then climbing left turn to 3000 on ATL VORTAC R-185 to SCARR INT/ATL 15 DME and hold.

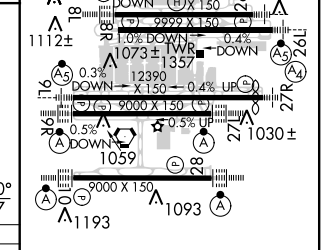
D-ATIS ARR <b>119.65</b> DEP <b>125.55</b>	ATLANTA APP CON <b>127.9 379.9</b>	ATLANTA TOWER ALL 8L-26R 8R-26L 9L-27R 9R-27L 10-28 RWYS <b>119.1 125.325 123.85 119.3 119.5 254.4</b> PRM <b>133.425</b>	GND CON ALL RWYS 10-28 <b>121.9 121.75 121.65 254.4</b>
--	--	--	--



SE-4, 21 JUN 2018 to 19 JUL 2018

SE-4, 21 JUN 2018 to 19 JUL 2018

1400	3000	SCARR	JUBBA I-PKU <b>6.8</b> RADAR	WONZR I-PKU <b>111.9</b> RADAR	PRMAN I-PKU <b>119.5</b> RADAR
↑	ATL R-185	△	IM 2700	4000	4000
CATEGORY	A		B	C	D
S-ILS 28	RA 264/14		150 DA 1148		



**SA CATEGORY I ILS - SPECIAL AIRCREW & AIRCRAFT CERTIFICATION REQUIRED**

HIRL all Rwy's  
TDZ/CL Rwy's 8L, 9R, 10, 26R, 27L and 28