

ATLANTA, GEORGIA

AL-26 (FAA)

# ILS PRM RWY 26R (SIMULTANEOUS CLOSE PARALLEL)

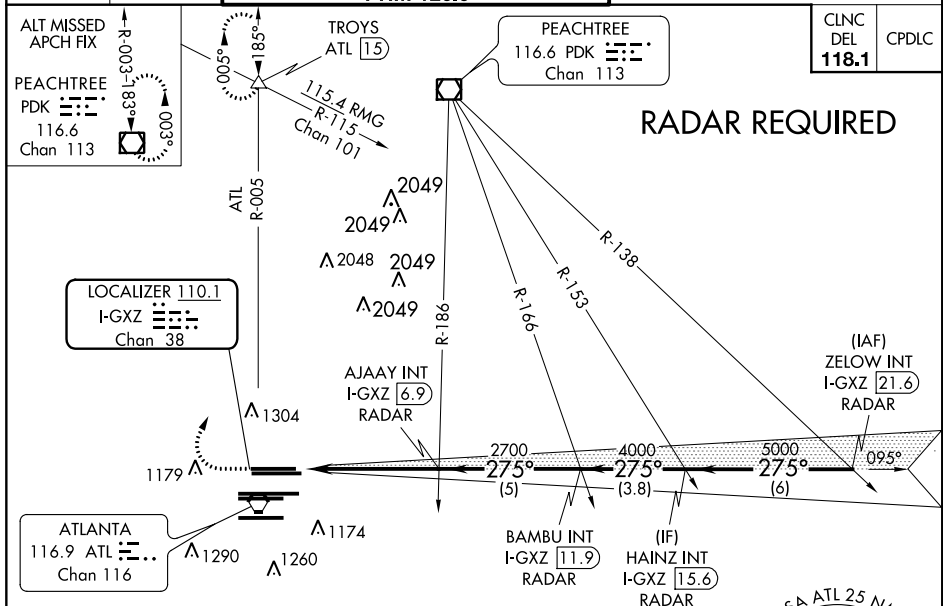
HARTSFIELD-JACKSON ATLANTA INTL (ATL)

LOC/DME I-GXZ <b>110.1</b> Chan <b>38</b>	APP CRS <b>275°</b>	Rwy ldg <b>8800</b> TDZE <b>990</b> Apt Elev <b>1026</b>
---	------------------------	---

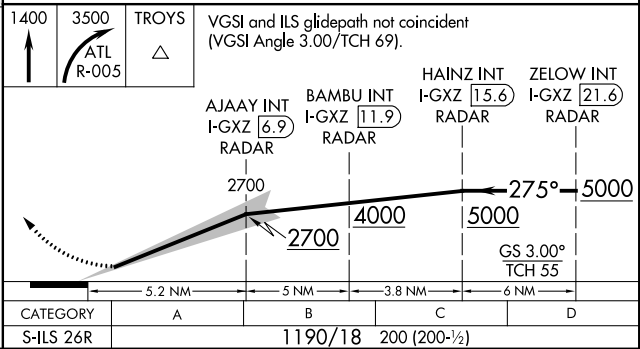
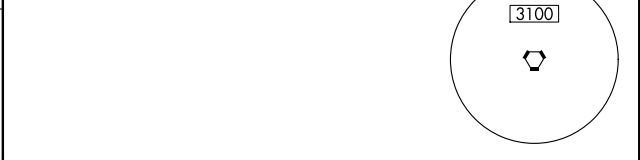
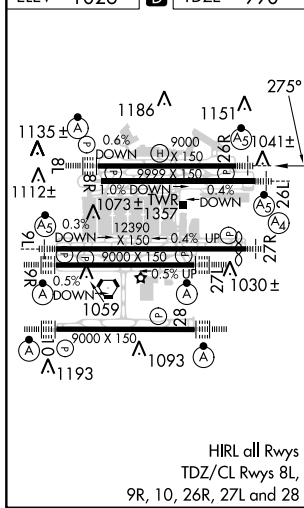
Simultaneous close parallel approach authorized with ILS PRM and RNAV PRM Rwy 27R or 27L or 28, or Rwy 27R and 28, or Rwy 27L and 28. Procedure not authorized when glideslope not available. Dual VHF comm required. See additional requirements on AAUP.

**MALSR**  
MISSED APPROACH: Climb to 1400 then climbing right turn to 3500 on ATL VORTAC R-005 to TROYS INT/ATL 15 DME and hold.

D-ATIS ARR <b>119.65</b> DEP <b>125.55</b>	ATLANTA APP CON <b>127.9 379.9</b>	ATLANTA TOWER 8L-26R 8R-26L 9L-27R 9R-27L 10-28 <b>119.1 125.325 123.85 119.3 119.5 254.4</b> PRM <b>126.9</b>	ALL RWYS (8L-26R,8R-26L) (9L-27R,9R-27L) 10-28 <b>121.9 121.75 121.65 254.4</b>	GND CON ALL RWYS <b>121.9 121.75 121.65 254.4</b>
--	--	---	--	--



ELEV <b>1026</b>	<b>D</b>	TDZE <b>990</b>
------------------	----------	-----------------



SE-4, 21 JUN 2018 to 19 JUL 2018

SE-4, 21 JUN 2018 to 19 JUL 2018

ATLANTA, GEORGIA  
Amdt 3 18SEP14

33°38'N-84°26'W

HARTSFIELD-JACKSON ATLANTA INTL (ATL)

## ILS PRM RWY 26R (SIMULTANEOUS CLOSE PARALLEL)