

LOC/DME I-BRU 108.7 Chan 24	APP CRS 275°	Rwy Idg 26L 9999 26R 8800 TDZE 996 Apt Elev 1026 1026
--	------------------------	---

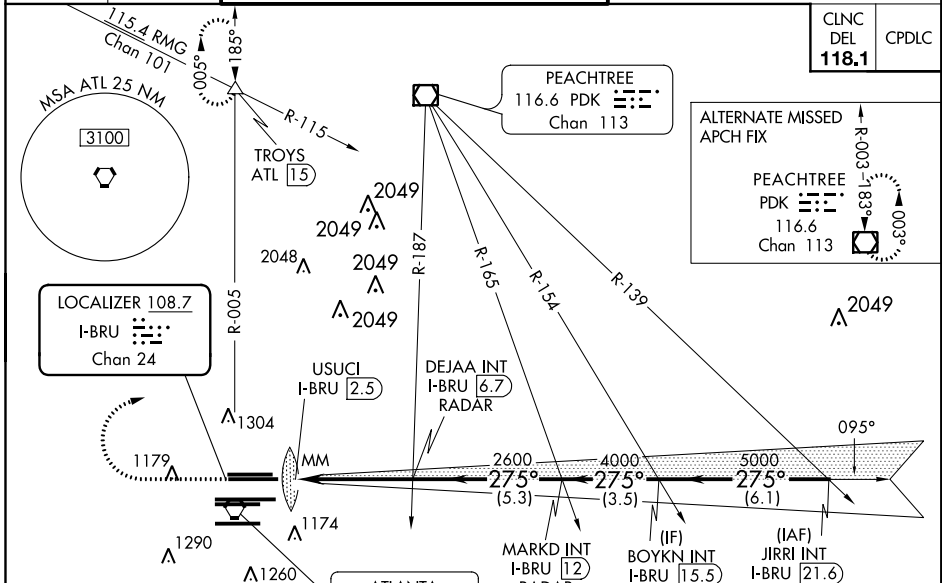
ILS or LOC RWY 26L

HARTSFIELD-JACKSON ATLANTA INTL (ATL)

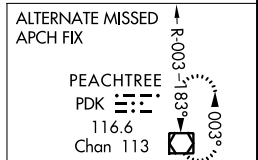
▼ Inoperative table does not apply to Sidestep Rwy 26R. For inop MALSR, increase S-ILS 26L visibility all Cats to RVR 4500 and S-LOC 26L Cat E visibility to 1¼. Simultaneous approach authorized with Rwy 27L or 27R or 28.

Rwy 26L MALSR	Rwy 26R MALSR	MISSED APPROACH: Climb to 1500 then climbing right turn to 3500 on ATL VORTAC R-005 to TROYS INT/ATL 1.5 DME and hold. (TACAN aircraft climb to 1500 then climbing right turn to 3500 on heading 005° for radar vectors.)
------------------	------------------	---

D-ATIS ARR 119.65	ATLANTA APP CON	ATLANTA TOWER	ALL RWYS	GND CON	ALL RWYS
DEP 125.55	127.9 379.9	8L-26R 119.1 8R-26L 125.325 9L-27R 123.85 9R-27L 119.3	10-28 119.5 254.4	(8L-26R,8R-26L) 121.9 (9L-27R,9R-27L) 121.75	10-28 121.65 254.4

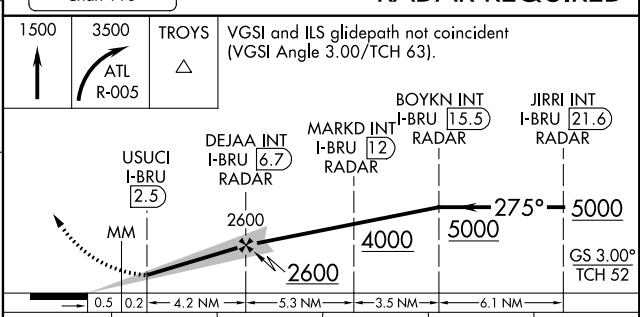
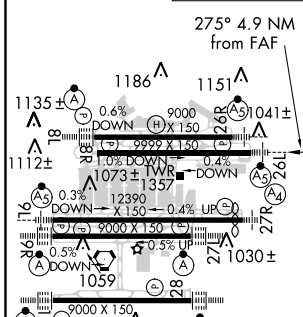


CLNC DEL	CPDLC
118.1	



ELEV 1026	D	TDZE 26L 996 TDZE 26R 990
-----------	----------	------------------------------

RADAR REQUIRED



CATEGORY	A	B	C	D	E
S-ILS 26L	1280/24 284 (300-½)				
S-LOC 26L	1420/24 424 (400-½)		1420/40 424 (400-¾)		
SIDESTEP 26R	1420/55 430 (400-1¼)		1420-1½ 430 (400-1½)		

SE-4, 21 JUN 2018 to 19 JUL 2018

SE-4, 21 JUN 2018 to 19 JUL 2018