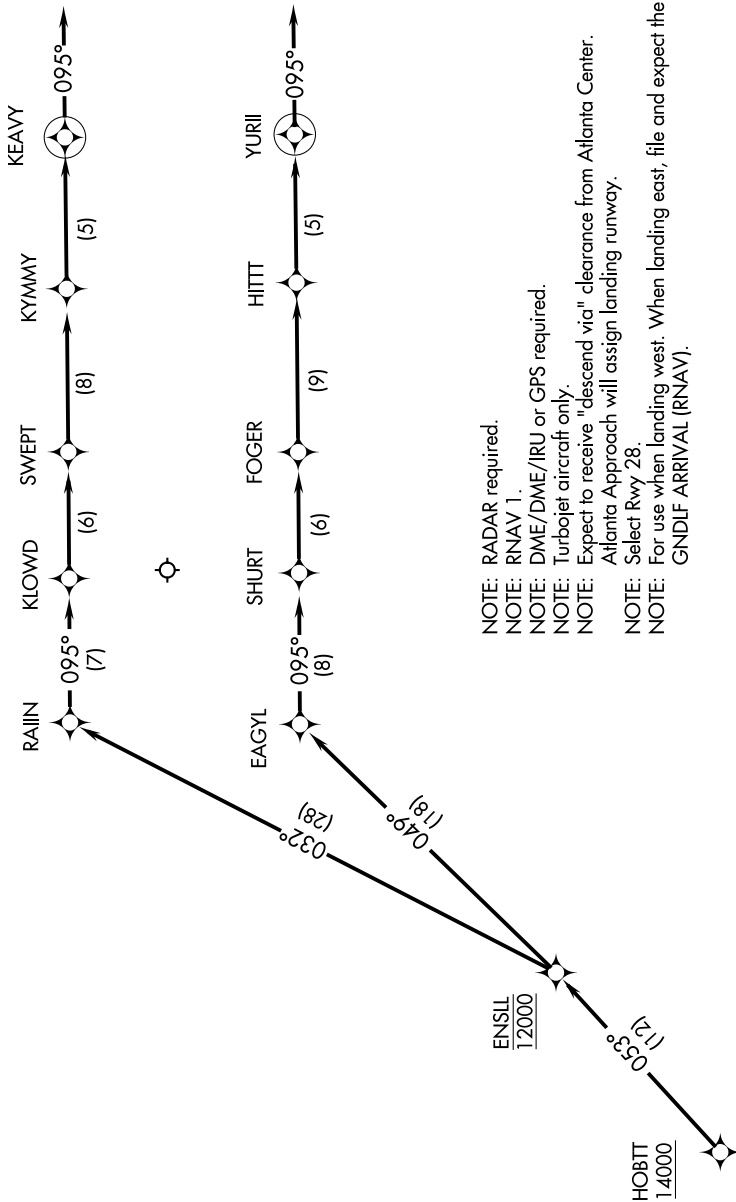
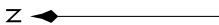


HOBT2 TWO ARRIVAL(RNAV) Arrival Routes

SE-4, 21 JUN 2018 to 19 JUL 2018

D-ATIS ARR  
119.65  
ATLANTA APP CON  
127.9 379.9



- NOTE: RADAR required.
- NOTE: RNAV 1.
- NOTE: DME/DME/IRU or GPS required.
- NOTE: Turboprop aircraft only.
- NOTE: Expect to receive "descend via" clearance from Atlanta Center.
- NOTE: Atlanta Approach will assign landing runway.
- NOTE: Select Rwy 28.
- NOTE: For use when landing west. When landing east, file and expect the GNDIF ARRIVAL (RNAV).

(NARRATIVE ON FOLLOWING PAGE)

NOTE: Chart not to scale.

SE-4, 21 JUN 2018 to 19 JUL 2018

HOBT2 TWO ARRIVAL(RNAV) Arrival Routes