

WAAS CH <b>81837</b> <b>W05A</b>	APP CRS <b>054°</b>	Rwy ldg TDZE Apt Elev	<b>8000</b> <b>117</b> <b>130</b>
--	------------------------	-----------------------------	---

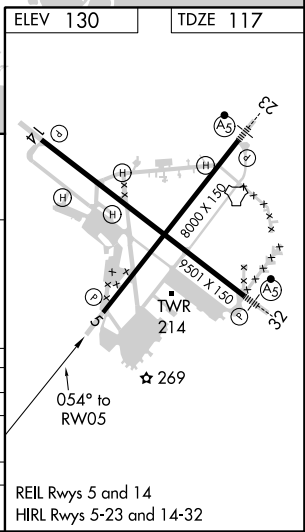
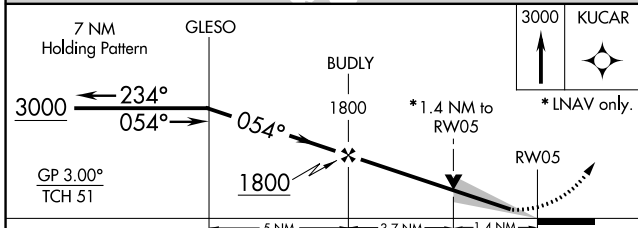
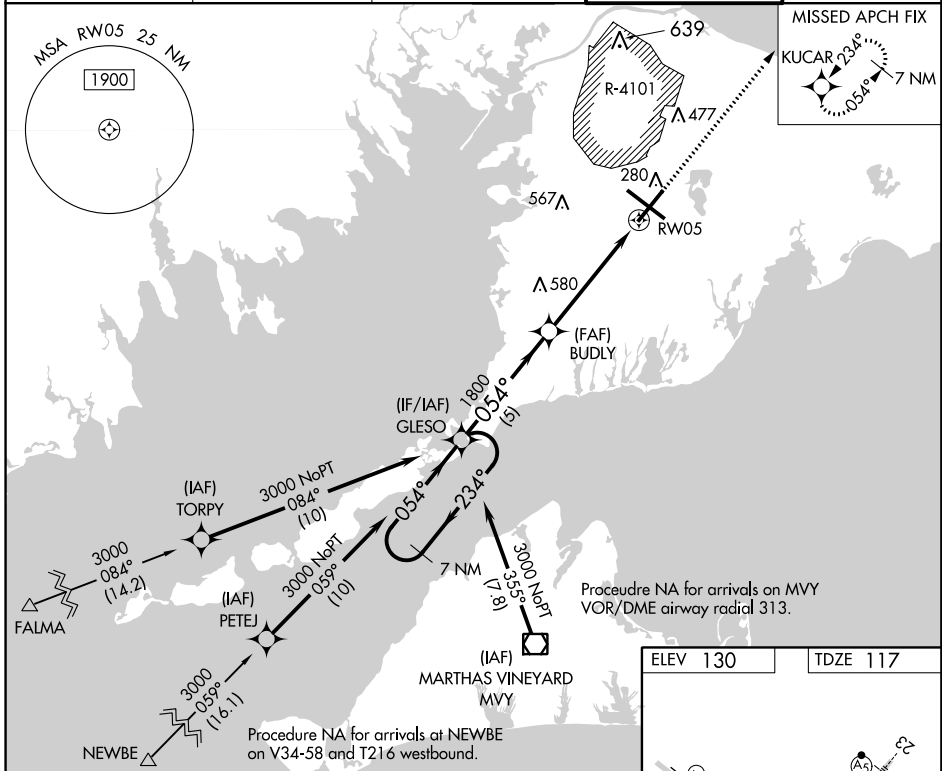
# RNAV (GPS) RWY 5

CAPE COD COAST GUARD AIR STATION (FMH)

**⚠** For uncompensated Baro-VNAV systems, LNAV/VNAV NA below -15°C (5°F) or above 54°C (130°F). DME/DME RNP-0.3 NA. Circling NA NE of Rwy 14 and NW of Rwy 23.

MISSED APPROACH: Climb to 3000 direct KUCAR and hold.

ATIS <b>120.475 236.825</b>	BOSTON APP CON * <b>118.2</b>	COAST GUARD APP CON <b>284.6</b>	COAST GUARD TOWER <b>128.425 291.1</b>	GND CON <b>124.15 275.8</b>
--------------------------------	----------------------------------	-------------------------------------	---	--------------------------------



CATEGORY	A	B	C	D
LPV DA		317- <sup>3</sup> / <sub>4</sub>	200 (200- <sup>3</sup> / <sub>4</sub> )	
LNAV/DA VNAV		456-1 <sup>1</sup> / <sub>8</sub>	339 (400-1 <sup>1</sup> / <sub>8</sub> )	
LNAV MDA	540-1	423 (500-1)	540-1 <sup>1</sup> / <sub>4</sub>	423 (500-1 <sup>1</sup> / <sub>4</sub> )
CIRCLING	580-1 450 (500-1)	640-1 510 (600-1)	900-2 <sup>1</sup> / <sub>4</sub> 770 (800-2 <sup>1</sup> / <sub>4</sub> )	900-2 <sup>1</sup> / <sub>2</sub> 770 (800-2 <sup>1</sup> / <sub>2</sub> )

NE-1, 24 MAY 2018 to 21 JUN 2018

NE-1, 24 MAY 2018 to 21 JUN 2018