

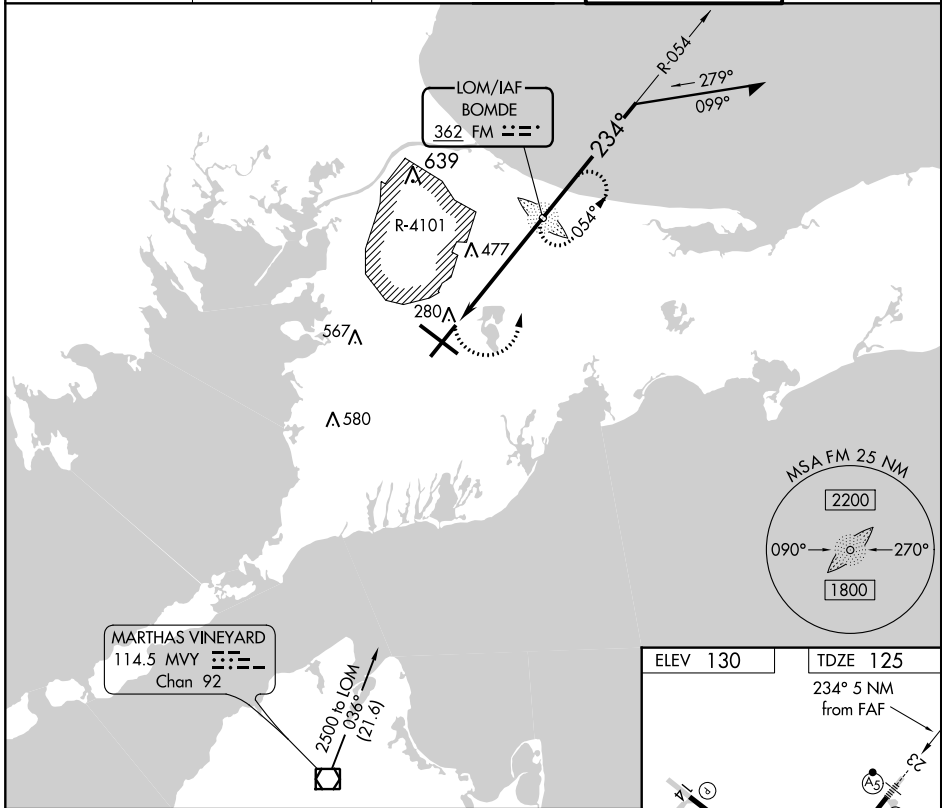
NDB FM	APP CRS	Rwy Idg	8000
362	234°	TDZE	125
		Apt Elev	130

NDB RWY 23

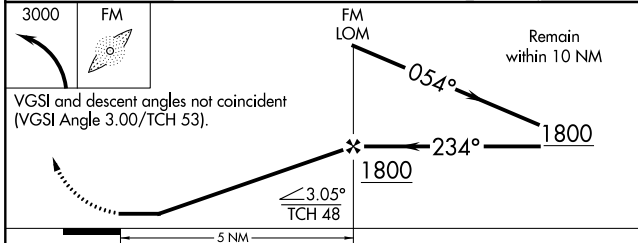
CAPE COD COAST GUARD AIR STATION (F'MH)

Circling NA northeast of Rwy 14 and northwest of Rwy 23.		MALSR 	MISSED APPROACH: Climbing left turn to 3000 direct FM LOM and hold.	
--	--	-----------	---	--

ATIS 120.475 236.825	BOSTON APP CON ★ 118.2	COAST GUARD APP CON 284.6	COAST GUARD TOWER 128.425 291.1	GND CON 124.15 275.8
--------------------------------	----------------------------------	-------------------------------------	---	--------------------------------



NE-1, 24 MAY 2018 to 21 JUN 2018



CATEGORY	A	B	C	D
S-23	780/40	655 (700-3/4)	780/60 655 (700-1 1/4)	780-1 3/4 655 (700-1 3/4)
CIRCLING	780-1	650 (700-1)	780-1 3/4 650 (700-1 3/4)	780-2 650 (700-2)