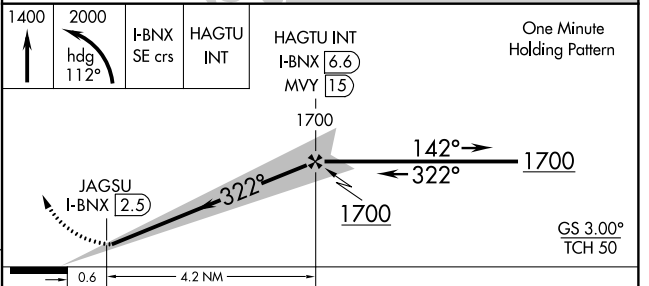
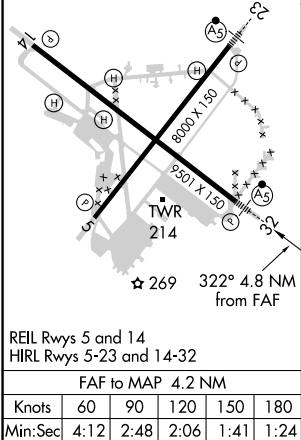
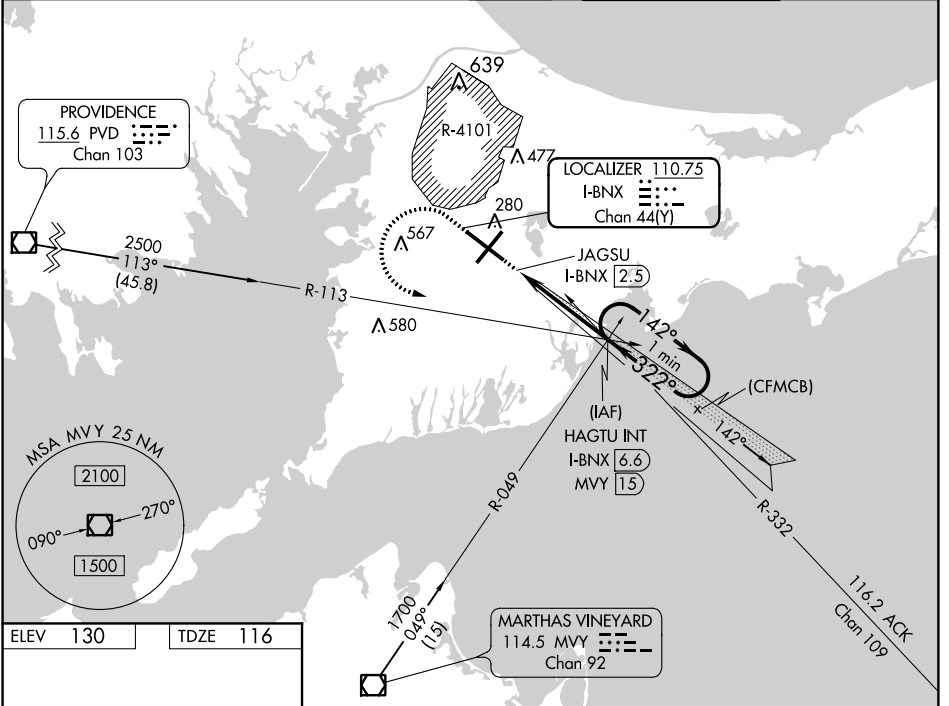


LOC/DME I-BNX 110.75 Chan 44(Y)	APP CRS 322°	Rwy Idg 9501
	TDZE 116	
	Apr Elev 130	

ILS or LOC RWY 32

CAPE COD COAST GUARD AIR STATION (F'MH)

Circling NA northeast of Rwy 14 and northwest of Rwy 23. *RVR 1800 authorized with use of FD or AP or HUD to DA.		MALSR 	MISSED APPROACH: Climb to 1400 then climbing left turn to 2000 on heading 112° and I-BNX localizer SE course to HAGTU INT/I-BNX 6.6 DME and hold.
ATIS 120.475 236.825	BOSTON APP CON * 118.2	COAST GUARD APP CON 284.6	COAST GUARD TOWER 128.425 291.1
			GND CON 124.15 275.8



CATEGORY	A	B	C	D
S-ILS 32	* 316/24 200 (200-½)			
S-LOC 32	520/24	404 (400-½)	520/40	404 (400-¾)
CIRCLING	580-1 450 (500-1)	640-1 510 (600-1)	640-1½ 510 (600-1½)	680-2 550 (600-2)

NE-1, 24 MAY 2018 to 21 JUN 2018

NE-1, 24 MAY 2018 to 21 JUN 2018