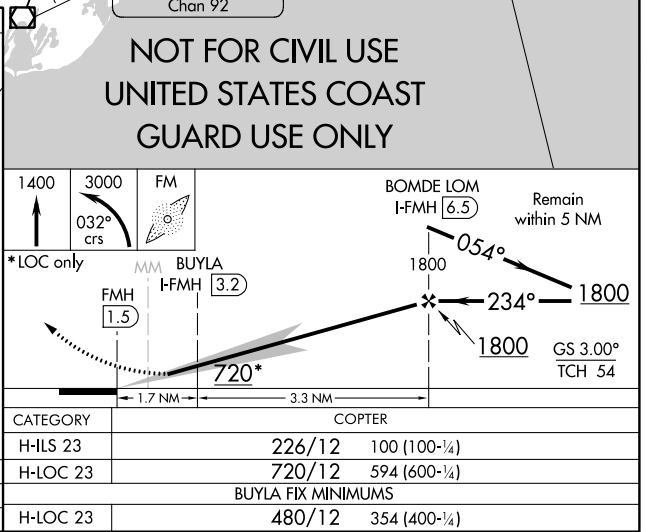
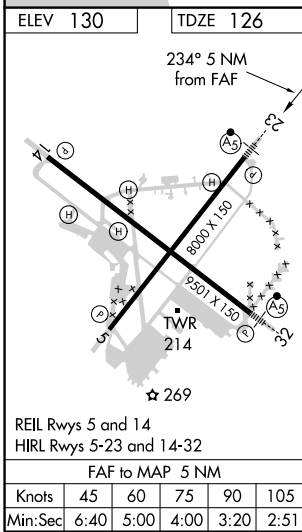
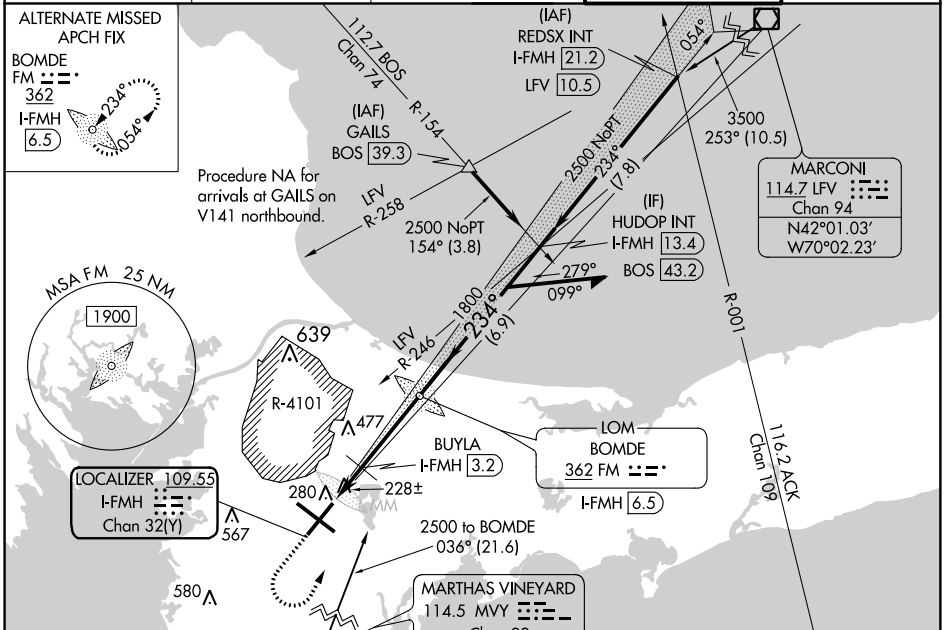


LOC/DME I-FMH 109.55 Chan 32(Y)	APP CRS 234°	Rwy Idg TDZE 126 Apt Elev 130
---	------------------------	---

COPTER ILS or LOC RWY 23

CAPE COD COAST GUARD AIR STATION (F^MH)

ADF required. For inoperative MALSR, increase H-ILS and H-LOC 23 visibility to RVR 2400. BUyla fix minimums: For inoperative MALSR, increase H-LOC 23 visibility to RVR 2400.		MALSR 	MISSED APPROACH: Climb to 1400 then climbing left turn to 3000 on 032° course to BOMDE LOM and hold.	
ATIS 120.475 236.825	BOSTON APP CON * 118.2	COAST GUARD APP CON 284.6	COAST GUARD TOWER 128.425 291.1	GND CON 124.15 275.8



NE-1, 24 MAY 2018 to 21 JUN 2018

NE-1, 24 MAY 2018 to 21 JUN 2018