

WAAS CH 49008 W05A	APP CRS 045°	Rwy Idg TDZE Apt Elev	5500 18 18
--	------------------------	-----------------------------	---------------------------------------

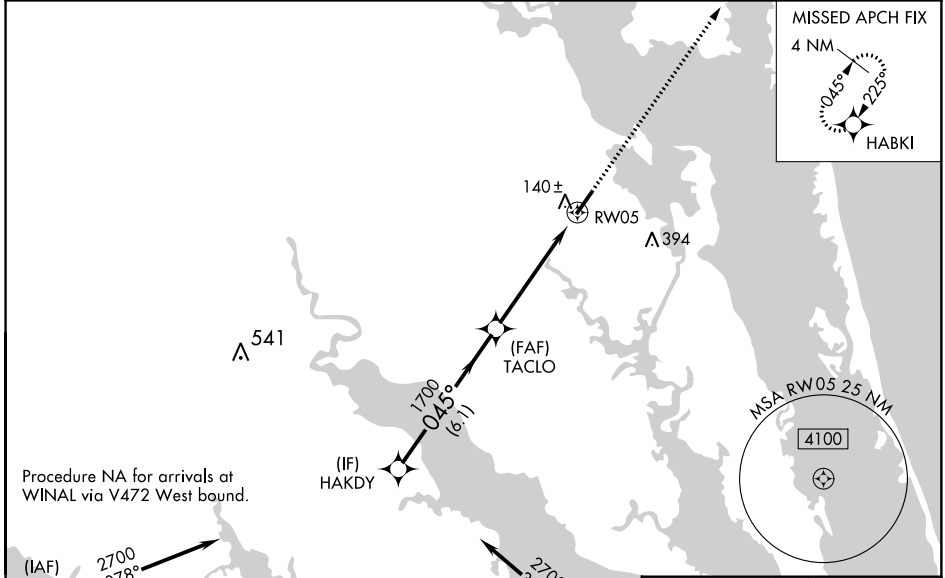
RNAV (GPS) RWY 5

CURRITUCK COUNTY RGNL (ONX)

⚠ Baro-VNAV NA when using Oceana NAS/Apollo Soucek altimeter setting. For uncompensated Baro-VNAV systems, LNAV/VNAV NA below -15°C (5°F) or above 49°C (120°F). DME/DME RNP-0.3 NA. Visibility reduction by helicopters NA. Procedure NA when tethered balloon located approximately 11.4 NM southwest of airport is flying. When local altimeter setting not received, use Oceana NAS/Apollo Soucek altimeter setting and increase all DA 59 feet, and all MDA 60 feet; increase LNAV Cat. C and D visibility ¼ mile.

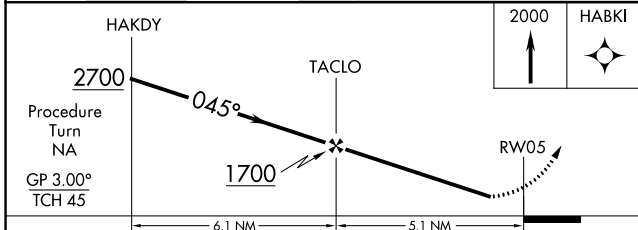
MISSED APPROACH:
Climb to 2000 direct HABKI and hold.

AWOS-3 119.775	OCEANA APP CON 123.9 266.8	CTAF 122.90
--------------------------	--------------------------------------	-----------------------

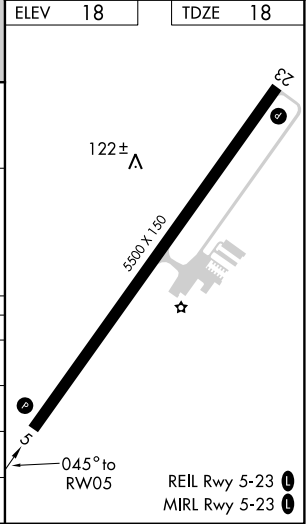


Procedure NA for arrivals at WINAL via V472 West bound.

Procedure NA for arrivals at OCSIP via V266 Southeast bound.



CATEGORY	A	B	C	D
LPV DA		343-1¼	325 (400-1¼)	
LNAV/VNAV DA		410-1½	392 (400-1½)	
LNAV MDA	400-1	382 (400-1)		400-1¼ 382 (400-1¼)
CIRCLING	440-1 422 (500-1)	480-1 462 (500-1)	480-1½ 462 (500-1½)	580-2 562 (600-2)



SE-2, 24 MAY 2018 to 21 JUN 2018

SE-2, 24 MAY 2018 to 21 JUN 2018