

WAAS CH <b>78423</b> <b>W08A</b>	APP CRS <b>081°</b>	Rwy Idg TDZE Apt Elev	<b>3900</b> <b>851</b> <b>860</b>
--	------------------------	-----------------------------	---

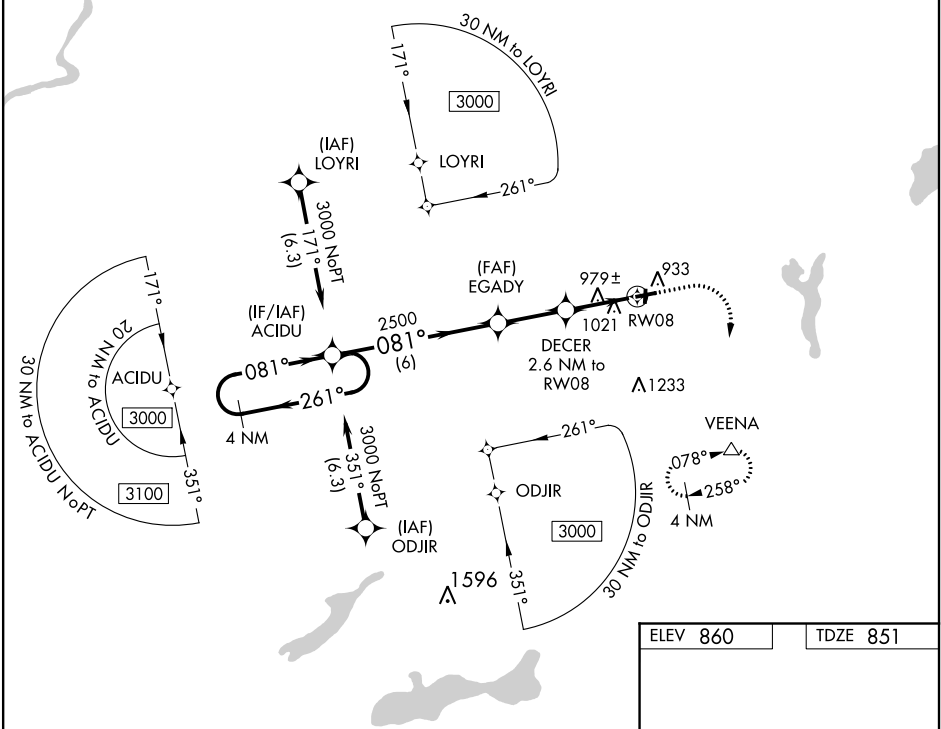
# RNAV (GPS) RWY 8

EAST TROY MUNI (57C)

**▽** Obtain local altimeter setting on CTAF; when not received use General Mitchell  
**▲ NA** Intl. altimeter setting and increase all MDA 80 feet. DME/DME RNP-0.3 NA.  
 Helicopter visibility reduction below 1 SM NA. Procedure NA at night.

**MISSED APPROACH:**  
 Climb to 2400 then  
 climbing right turn to 3000  
 direct VEENA and hold.

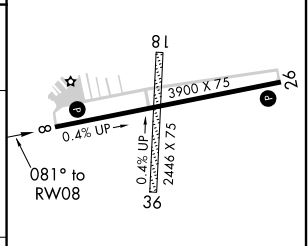
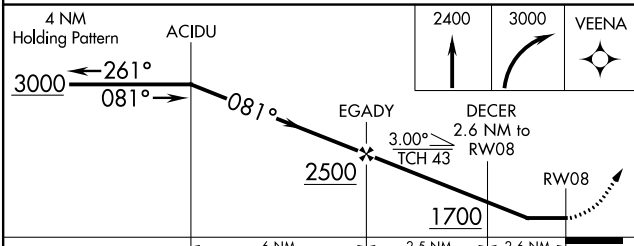
AWOS-3PT <b>118.125</b>	MILWAUKEE APP CON <b>125.35 307.0</b>	GCO <b>121.725</b>	UNICOM <b>123.0 (CTAF) 0</b>
----------------------------	--	-----------------------	---------------------------------



EC-3, 24 MAY 2018 to 21 JUN 2018

EC-3, 24 MAY 2018 to 21 JUN 2018

ELEV 860	TDZE 851
----------	----------



CATEGORY	A	B	C	D
LP MDA	1240-1	389 (400-1)		NA
LNAV MDA	1280-1	429 (500-1)		NA
CIRCLING	1340-1	480 (500-1)		NA

MIRL Rwy 8-26 0  
 REIL Rws 8 and 26 0