

WAAS CH 73023 W26A	APP CRS 261°	Rwy Idg TDZE 860 Apt Elev 860	3900
--	------------------------	---	-------------

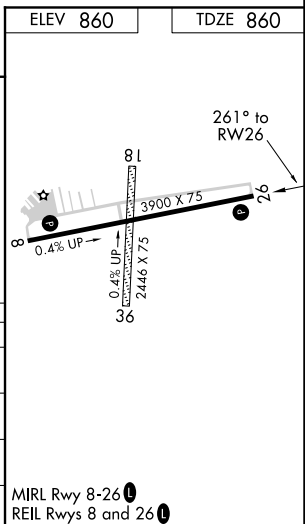
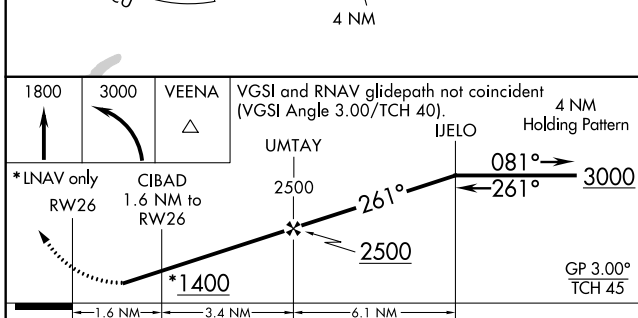
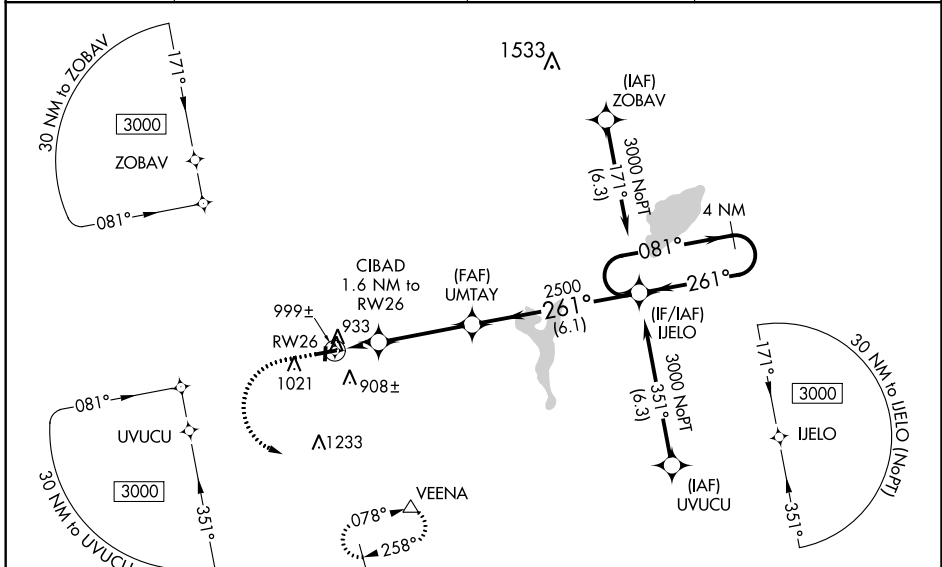
RNAV (GPS) RWY 26

EAST TROY MUNI (57C)

NA Baro-VNAV NA when using General Mitchell Intl altimeter setting. For uncompensated Baro-VNAV systems, LNAV/VNAV NA below -16°C (4°F) or above 54°C (130°F). Obtain local altimeter setting on CTAF; when not received, use General Mitchell Intl altimeter setting and increase all DA 72 feet and all MDA 80 feet, increase LNAV/VNAV visibility all Cats ¼ mile. DME/DME RNP-0.3 NA. Helicopter visibility reduction below 1 SM NA. Procedure NA at night.

MISSED APPROACH: Climb to 1800 then climbing left turn to 3000 direct VEENA and hold.

AWOS-3PT 118.125	MILWAUKEE APP CON 125.35 307.0	GCO 121.725	UNICOM 123.0 (CTAF) 0
----------------------------	--	-----------------------	---------------------------------



CATEGORY	A	B	C	D
LPV DA	1110-1 250 (300-1)			NA
LNAV/VNAV DA	1161-1 301 (400-1)			NA
LNAV MDA	1260-1 400 (500-1)			NA
CIRCLING	1340-1 480 (500-1)			NA

EC-3, 24 MAY 2018 to 21 JUN 2018

EC-3, 24 MAY 2018 to 21 JUN 2018

MIRL Rwy 8-26 0
REIL Rwy 8 and 26 0