

(NOTWN4.LAS) 16315

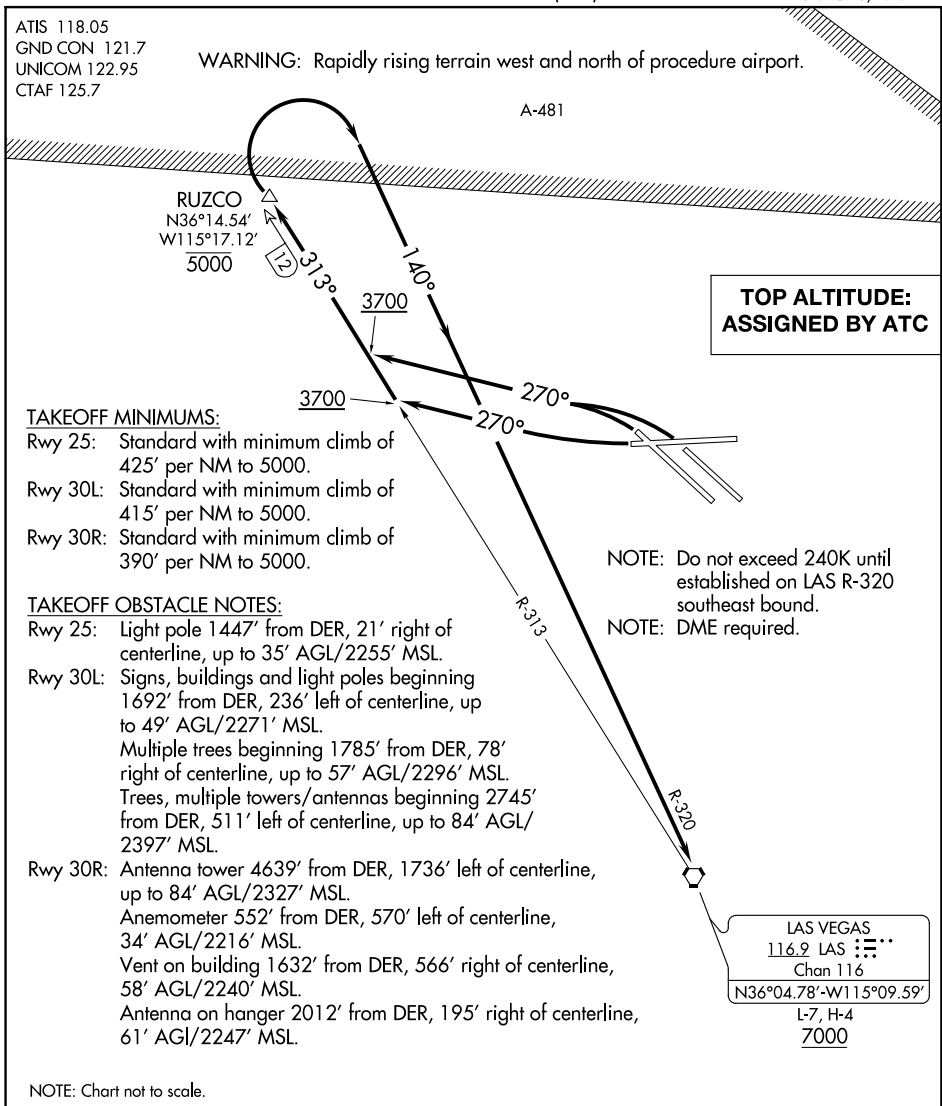
NORTHTOWN FOUR DEPARTURE

SL-6970 (FAA)

NORTH LAS VEGAS (VGT)
LAS VEGAS, NEVADA

ATIS 118.05
GND CON 121.7
UNICOM 122.95
CTAF 125.7

WARNING: Rapidly rising terrain west and north of procedure airport.



**TOP ALTITUDE:
ASSIGNED BY ATC**

TAKEOFF MINIMUMS:

- Rwy 25: Standard with minimum climb of 425' per NM to 5000.
- Rwy 30L: Standard with minimum climb of 415' per NM to 5000.
- Rwy 30R: Standard with minimum climb of 390' per NM to 5000.

TAKEOFF OBSTACLE NOTES:

- Rwy 25: Light pole 1447' from DER, 21' right of centerline, up to 35' AGL/2255' MSL.
- Rwy 30L: Signs, buildings and light poles beginning 1692' from DER, 236' left of centerline, up to 49' AGL/2271' MSL.
Multiple trees beginning 1785' from DER, 78' right of centerline, up to 57' AGL/2296' MSL.
Trees, multiple towers/antennas beginning 2745' from DER, 511' left of centerline, up to 84' AGL/2397' MSL.
- Rwy 30R: Antenna tower 4639' from DER, 1736' left of centerline, up to 84' AGL/2327' MSL.
Anemometer 552' from DER, 570' left of centerline, 34' AGL/2216' MSL.
Vent on building 1632' from DER, 566' right of centerline, 58' AGL/2240' MSL.
Antenna on hanger 2012' from DER, 195' right of centerline, 61' AGL/2247' MSL.

- NOTE: Do not exceed 240K until established on LAS R-320 southeast bound.
- NOTE: DME required.

LAS VEGAS
116.9 LAS Chan 116
N36°04.78'-W115°09.59'
L-7, H-4
7000

NOTE: Chart not to scale.

DEPARTURE ROUTE DESCRIPTION

TAKEOFF RWY 25: Climbing right turn heading 270° to intercept LAS R-313 at or above 3700, thence. . .

TAKEOFF RWYS 30L/R: Climbing left turn heading 270° and right turn to intercept LAS R-313 at or above 3700, thence. . .

. . . on LAS R-313 outbound to cross RUZCO/LAS 12 DME at or below 5000, then climbing right turn to intercept LAS R-320 to LAS VORTAC. Cross LAS VORTAC at or above 7000.

NORTHTOWN FOUR DEPARTURE
(NOTWN4.LAS) 25JUN15

LAS VEGAS, NEVADA
NORTH LAS VEGAS (VGT)

SW-4, 24 MAY 2018 to 21 JUN 2018

SW-4, 24 MAY 2018 to 21 JUN 2018