

LOC/DME I-HWGW 110.7 Chan 44	APP CRS 120°	Rwy Idg TDZE Apt Elev	4203 2189 2205
--	------------------------	-----------------------------	---

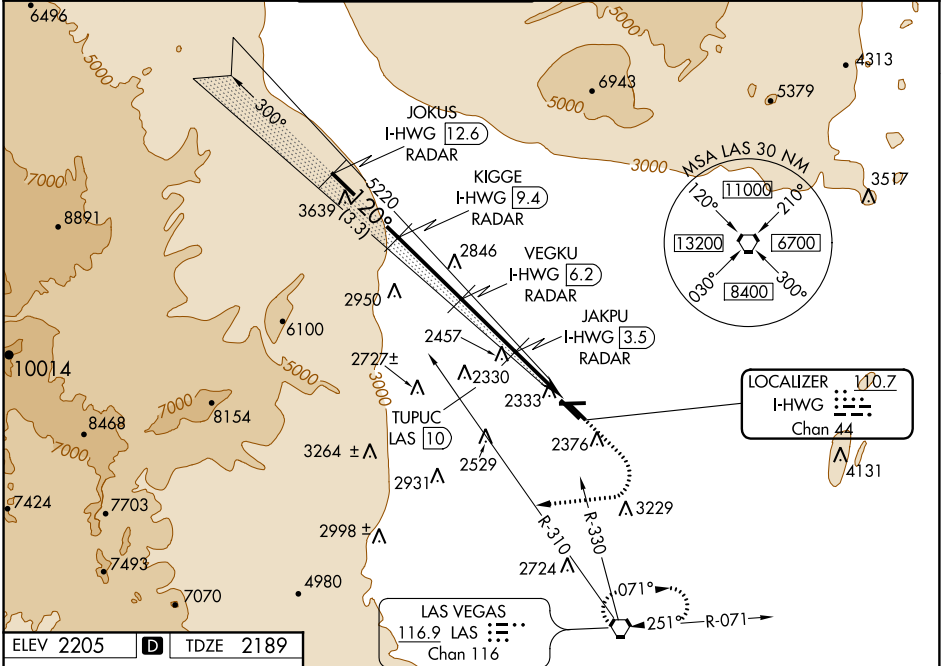
ILS or LOC RWY 12L

NORTH LAS VEGAS (VGT)

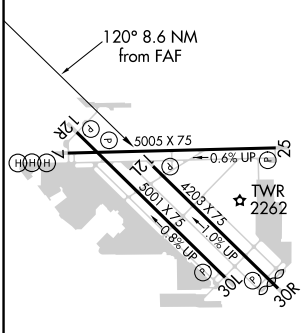
⚠ When local altimeter setting not received, use McCarran Intl altimeter setting and increase DA to 2478, and visibility Cats A/B ¼ mile; increase all MDA 40 feet. DME and RADAR required.

MISSED APPROACH: Climb to 2600, then climbing right turn heading 250° to 6000, intercept LAS R-310 outbound to TUPUC/LAS 10 DME then turn right via LAS R-330 inbound to LAS VORTAC and hold.

ATIS 118.05	LAS VEGAS APP CON 119.4 360.85	NORTH LAS VEGAS TOWER* 125.7 (CTAF) 360.75	GND CON 121.7	CLNC DEL 124.0	UNICOM 122.95
-----------------------	--	--	-------------------------	--------------------------	-------------------------



ELEV 2205	D	TDZE 2189
-----------	----------	-----------

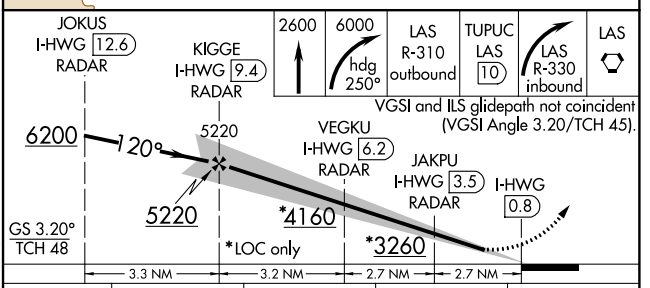


REIL all Rwy's **Ⓛ**
MIRL Rwy's 7-25 and 12L-30R **Ⓛ**
MIRL Rwy's 12R-30L

FAF to MAP 8.6 NM

Knots	60	90	120	150	180
Min:Sec	8:36	5:44	4:18	3:26	2:52

DME and RADAR REQUIRED



CATEGORY	A	B	C	D
S-ILS 12L	2456-1	267 (300-1)		NA
S-LOC 12L	2580-1	391 (400-1)		NA
CIRCLING	2680-1	475 (500-1)		NA

SW-4, 24 MAY 2018 to 21 JUN 2018

SW-4, 24 MAY 2018 to 21 JUN 2018