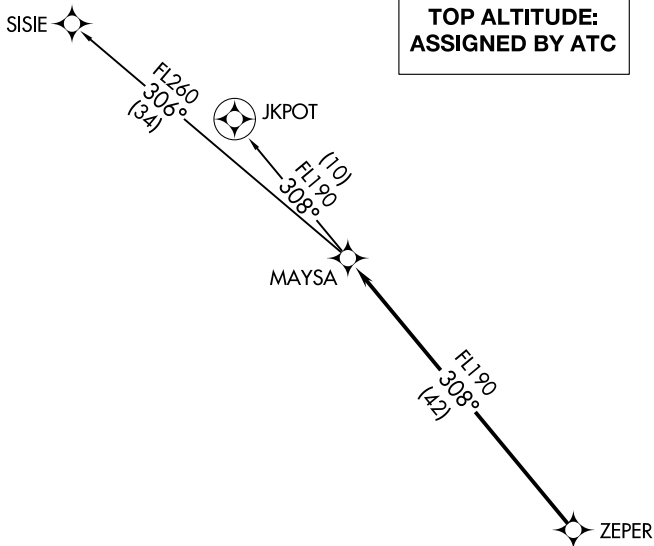


(MAYSA6.MAYSA) 18144

# MAYSA SIX DEPARTURE (RNAV)

AL-6915 (FAA)

GLENDALE MUNI (G<sup>ET</sup>U)  
GLENDALE, ARIZONA



**TOP ALTITUDE:  
ASSIGNED BY ATC**

ATIS 119.425  
 GND CON 118.0  
 GLENDALE TOWER\* 121.0  
 LUKE DEP CON\* 121.0  
 PHOENIX DEP CON 118.15 363.125  
 120.7 239.0

SW-4, 24 MAY 2018 to 21 JUN 2018

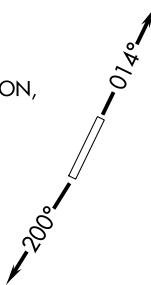
SW-4, 24 MAY 2018 to 21 JUN 2018

- NOTE: RNAV 1.
- NOTE: Turbojets and turboprops only.
- NOTE: RADAR required.
- NOTE: GPS required.
- NOTE: Aircraft filing over EED, HEC, or PMD, use JKPOT TRANSITION, all others use SISIE TRANSITION.
- NOTE: Aircraft departing KGEU and KGYR ATC assigned only.

### TAKEOFF MINIMUMS

Rwys 1, 19: Standard.

NOTE: Chart not to scale.



### DEPARTURE ROUTE DESCRIPTION

TAKEOFF RUNWAY 1: Climb heading 014° or as assigned by ATC, thence. . .

TAKEOFF RUNWAY 19: Climb heading 200° or as assigned by ATC, thence. . .

. . . expect RADAR vectors to ZEPER, then on track 308° to MAYSA, then on (transition).  
Maintain ATC assigned altitude, expect filed altitude 3 minutes after departure.

JKPOT TRANSITION (MAYSA6.JKPOT)

SISIE TRANSITION (MAYSA6.SISIE)

# MAYSA SIX DEPARTURE (RNAV)

(MAYSA6.MAYSA) 24MAY18

GLENDALE, ARIZONA  
GLENDALE MUNI (G<sup>ET</sup>U)