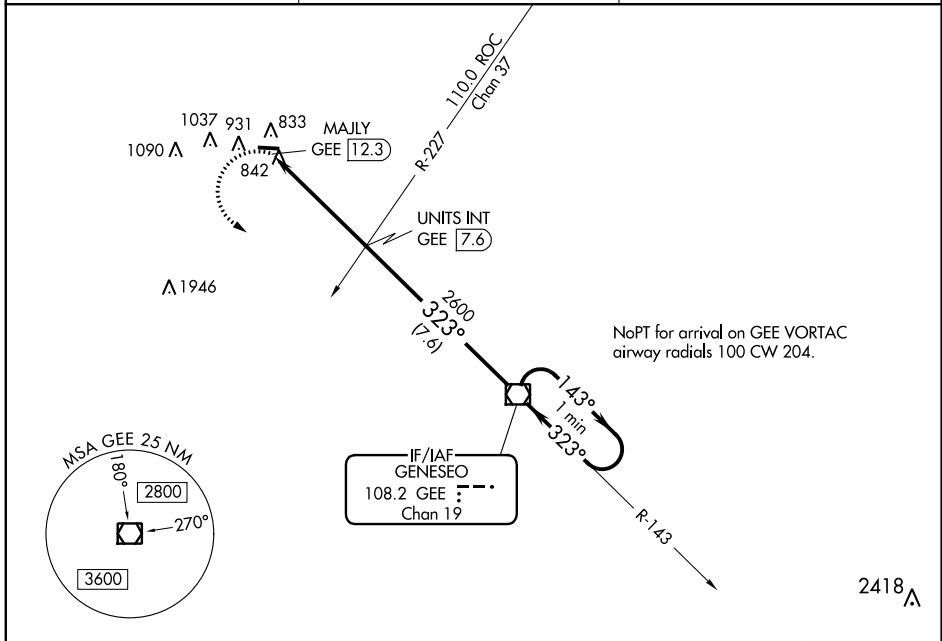


VOR/DME GEE 108.2 Chan 19	APP CRS 323°	Rwy Idg TDZE Apt Elev	N/A N/A 780
---	------------------------	-----------------------------	--

VOR-A
LE ROY (5G0)

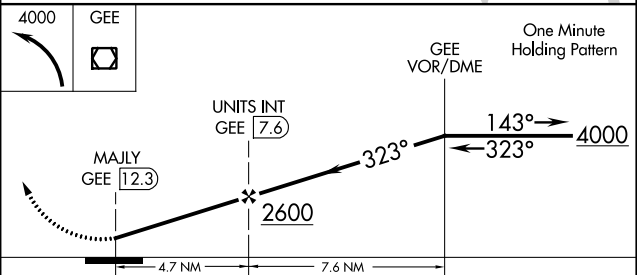
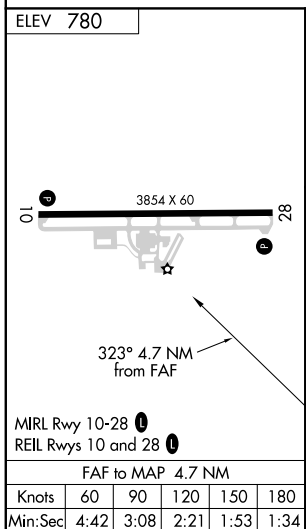
<p>⚠ NA Use Greater Rochester altimeter setting. Helicopter visibility reduction below 1 SM NA. Circling Rwy 10 NA at night. When Circling to Rwy 28 at night, operational VGSI required, remain on or above VGSI glidepath until threshold.</p>	<p>MISSED APPROACH: Climbing left turn to 4000 direct GEE VOR/ DME and hold.</p>
---	---

GREATER ROCHESTER INTL ASOS 124.825	ROCHESTER APP CON 123.7 322.3	UNICOM 122.8 (CTAF) 0
---	---	---------------------------------



NE-2, 24 MAY 2018 to 21 JUN 2018

NE-2, 24 MAY 2018 to 21 JUN 2018



FAF to MAP 4.7 NM				
Knots	60	90	120	150
Min:Sec	4:42	3:08	2:21	1:53
CIRCLING	1380-1	600 (600-1)	NA	