

WAAS CH 61030 W10A	APP CRS 104°	Rwy Idg TDZE Apt Elev	3854 780 780
--	------------------------	-----------------------------	---

RNAV (GPS) RWY 10

LE ROY (5G(0))

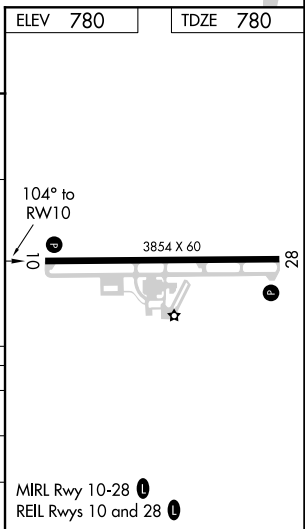
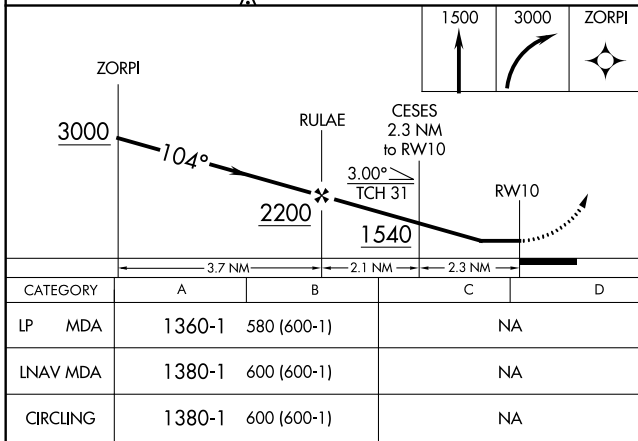
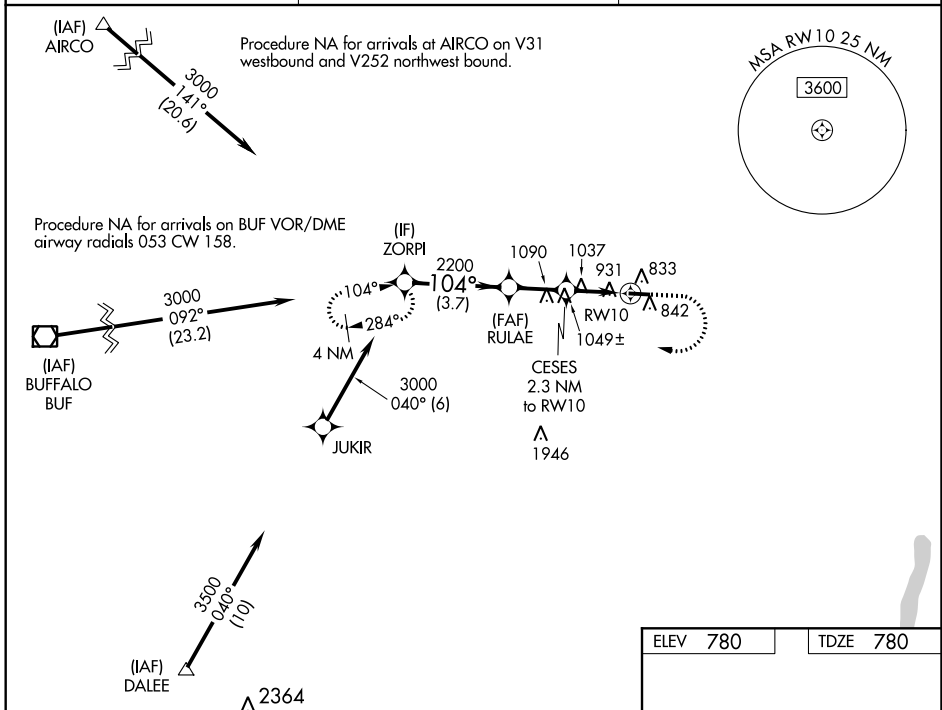
NA Use Greater Rochester altimeter setting. DME/DME RNP-0.3 NA. Helicopter visibility reduction below 1 SM NA. Straight-in Rwy 10 NA at night, Circling Rwy 10 NA at night. When Circling to Rwy 28 at night, operational VGSJ required, remain on or above VGSJ glidepath until threshold.

MISSED APPROACH: Climb to 1500 then climbing right turn to 3000 direct ZORPI and hold.

GREATER ROCHESTER INTL ASOS
124.825

ROCHESTER APP CON
123.7 322.3

UNICOM
122.8 (CTAF) 0



NE-2, 24 MAY 2018 to 21 JUN 2018

NE-2, 24 MAY 2018 to 21 JUN 2018