

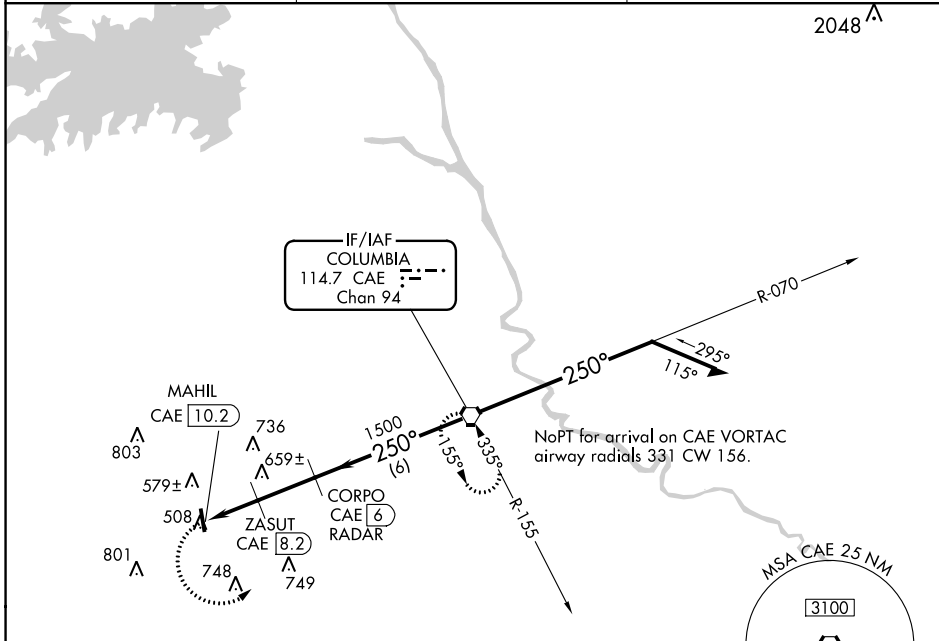
VORTAC CAE 114.7 Chan 94	APP CRS 250°	Rwy Idg TDZE Apt Elev	N/A N/A 452
--	------------------------	-----------------------------	--

VOR-A

LEXINGTON COUNTY AT PELION (6J0)

<p>NA</p> <p>Use Columbia Metropolitan altimeter setting; when not received, use Jim Hamilton L B Owens altimeter setting and increase all MDA 20 feet. DME or RADAR required.</p>	<p>MISSED APPROACH: Climbing left turn to 2100 direct CAE VORTAC and hold.</p>
---	---

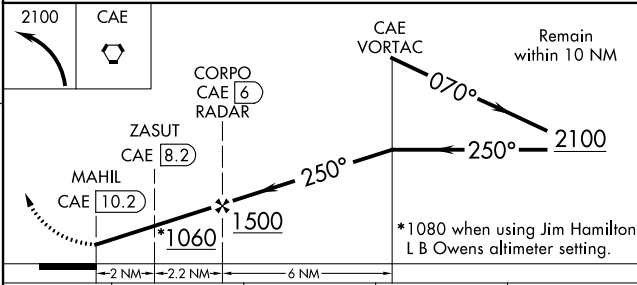
COLUMBIA METROPOLITAN ASOS 120.15	COLUMBIA APP CON 124.15 338.2	UNICOM 123.0 (CTAF) 0
---	---	---------------------------------



SE-2, 24 MAY 2018 to 21 JUN 2018

SE-2, 24 MAY 2018 to 21 JUN 2018

ELEV 452



CATEGORY	A		B		C	D
CIRCLING	1060-1		608 (700-1)		NA	
ZASUT FIX MINIMUMS						
CIRCLING	940-1 488 (500-1)	960-1 508 (600-1)	NA			

VOR-A