

WAAS CH 40326 W36A	APP CRS 358°	Rwy Idg 4335 TDZE 452 Apt Elev 452
--	------------------------	---

RNAV (GPS) RWY 36

LEXINGTON COUNTY AT PELION (6J0)

▼ Baro-VNAV NA. DME/DME RNP-0.3 NA. Rwy 36 helicopter visibility reduction below 3/4 SM NA. Use Columbia Metropolitan altimeter setting; when not received use Jim Hamilton L B Owens altimeter setting and increase all DA 19 feet, all MDA 20 feet and increase LPV and LNAV/VNAV all Cats visibility 1/8 mile.

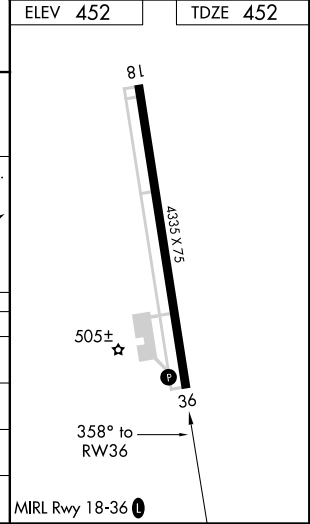
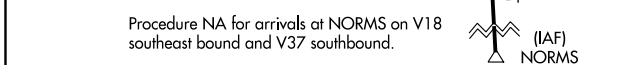
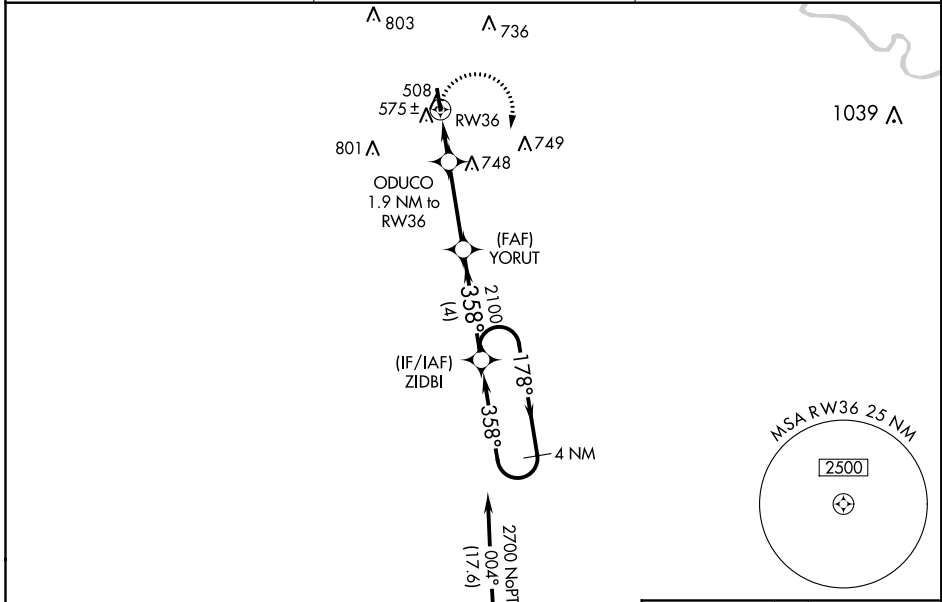
▲ NA

MISSED APPROACH: Climbing right turn to 2700 direct ZIDBI and hold.

COLUMBIA METROPOLITAN ASOS
120.15

COLUMBIA APP CON
124.15 338.2

UNICOM
123.0 (CTAF) 0



CATEGORY	A	B	C	D
LPV DA	757-1	305 (400-1)		NA
LNAV/VNAV DA	793-1 1/8	341 (400-1 1/8)		NA
LNAV MDA	880-1	428 (500-1)		NA
CIRCLING	940-1 488 (500-1)	960-1 508 (600-1)		NA

SE-2, 24 MAY 2018 to 21 JUN 2018

SE-2, 24 MAY 2018 to 21 JUN 2018