

WAAS CH 82526 W18A	APP CRS 178°	Rwy Idg TDZE 452 Apt Elev 452	4335
--	------------------------	---	-------------

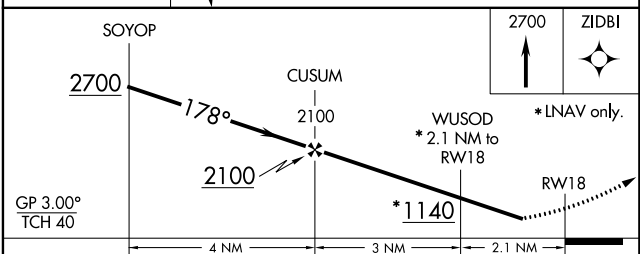
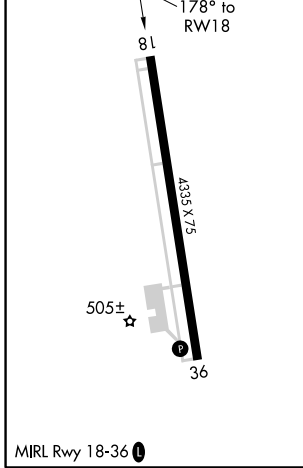
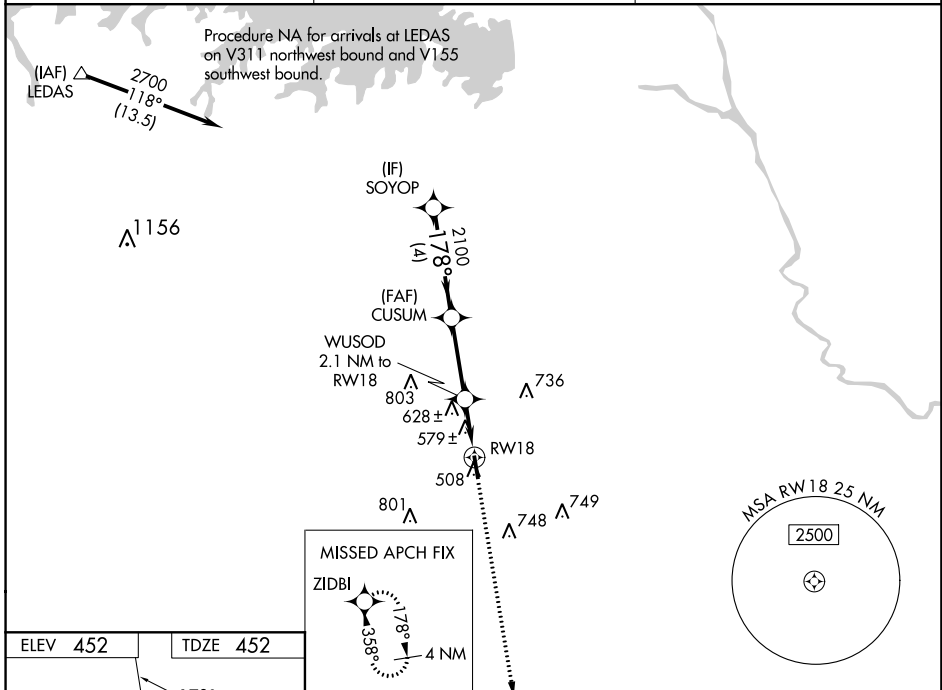
RNAV (GPS) RWY 18

LEXINGTON COUNTY AT PELION (6J0)

NA Baro-VNAV NA. DME/DME RNP-0.3 NA. Rwy 18 helicopter visibility reduction below $\frac{3}{4}$ SM NA. Use Columbia Metropolitan altimeter setting; when not received use Jim Hamilton L B Owens altimeter setting and increase all DA 19 feet, all MDA 20 feet and increase LPV and LNAV/VNAV all Cats visibility $\frac{1}{8}$ mile.

MISSED APPROACH:
Climb to 2700 direct ZIDBI and hold.

COLUMBIA METROPOLITAN ASOS 120.15	COLUMBIA APP CON 124.15 338.2	UNICOM 123.0 (CTAF) 0
---	---	---------------------------------



CATEGORY	A	B	C	D
LPV DA	757-1	305 (400-1)		NA
LNAV/VNAV DA	797-1 $\frac{1}{8}$	345 (400-1 $\frac{1}{8}$)		NA
LNAV MDA	940-1	488 (500-1)		NA
CIRCLING	940-1 488 (500-1)	960-1 508 (600-1)		NA