

AC SIN FIVE DEPARTURE (RNAV)

AL-6514 (FAA)

HENDERSON EXECUTIVE (HND)
LAS VEGAS, NEVADA

TOP ALTITUDE:
FL190

ATIS 120.775
GND CON 127.8
HENDERSON TOWER* 125.1 (CTAF)
LAS VEGAS DEP CON 118.4

NOTE: GPS required.
NOTE: RNAV 1.
NOTE: Do not exceed 200K until leaving 6000.



DEPARTURE ROUTE DESCRIPTION

TAKEOFF RUNWAY 17R: Climb on heading 168° to intercept course 199° to CAVER, then on track 160° to DAWN1, then on track 099° to CAPTA, then on track 073° to BAWLD, then on track 052° to cross ACSIN at or above 13000, thence. . . .

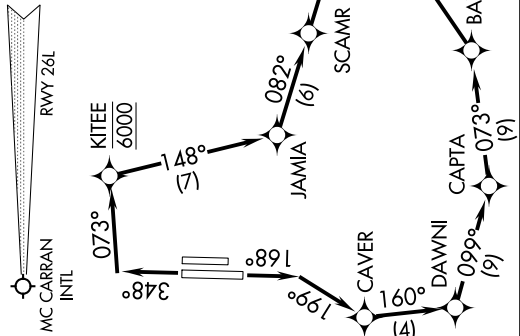
TAKEOFF RUNWAY 35L: Climb on heading 348° to intercept course 073° to cross KITEE at 6000, then on track 148° to JAMIA, then on track 082° to SCAMR, then on track 082° to cross ACSIN at or above 13000, thence. . . .

. . . .on assigned transition, maintain FL190, expect filed altitude 10 minutes after departure.

CIRQS TRANSITION (AC SIN5.CIRQS)

DOVE CREEK TRANSITION (AC SIN5.DVC)

VERKIN TRANSITION (AC SIN5.VERKN)



TAKEOFF MINIMUMS

Rwys 17L, 35R: NA- ATC.
Rwy 17R: Standard with minimum climb of 560' per NM to 5200.
Rwy 35L: Standard with minimum climb of 440' per NM to 4700.

NOTE: Chart not to scale.

AC SIN FIVE DEPARTURE (RNAV)